

05-11-2006
2006-0983

Fax 319-266-1515

PREPARED BY DENNIS R. PRANGE, SHOFF CONSULTING ENGINEERS, LC, 209 FRANKLIN STREET, SUITE A2, CEDAR FALLS, IOWA 50613 (319) 266-0258

UNITED STATES PUBLIC LAND SURVEY CORNER CERTIFICATE OF

Land Survey Monuments situated in Section No. 25, Township No. 94 North, Range No. 13 West, of the Fifth Principal Meridian, Chickasaw County, Iowa.
Previously recorded in Book N/A on Page _____ in the office of the County Recorder.
(book, page, document number, etc.)

(Show reason for preparing this certificate, the evidence and detailed procedures used in establishing the corner positions and monumentation found or placed.)

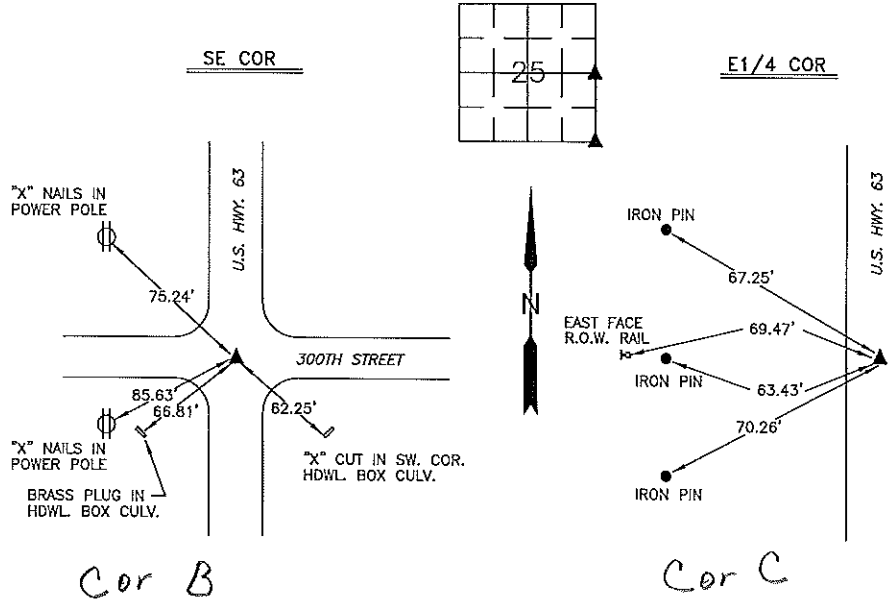
Monument Description and Remarks: Southeast Corner Sec. 25-94-13 - Found Iowa D.O.T. nail and washer on centerline U.S. Highway No. 63.

East 1/4 Corner Section 25-94-13 - Found Iowa D.O.T. nail and washer 4.8 feet East of centerline U.S. Highway No. 63

PLAN - VIEW

(Show a minimum of three reference ties to durable physical objects, relevant monuments and physical conditions that will enable recovery of the corner.)

NOT TO SCALE



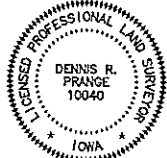
ALL TIES ARE HORIZONTAL DISTANCES

I hereby certify that this land surveying document was prepared by me or under my direct personal supervision and that I am a duly licensed Professional Land Surveyor under the laws of the State of Iowa.

Signed: Dennis R. Prange
Dennis R. Prange, L.S. Iowa License No. 10040

Date: May 8, 2006

SEAL



My License renewal date is December 31, 2006.
Pages or sheets covered by this seal: this page only

Corner	List Corners to be Indexed Section	Tap	Range
SE COR	25	94	13
E1/4 COR	25	94	13

Drawn by: DRP

Checked by: