

2003-0321

PREPARED BY ROBERT L. HOLZE MID-WEST LAND SURVEYORS, INC., P.O. BOX 1352, MASON CITY, IOWA 50402-1352. (641)-423-1451

UNITED STATES PUBLIC LAND SURVEY CORNER CERTIFICATE OF

Land Survey Monuments situated in Section 3, Township 94N, Range 13W, of the Fifth Principal Meridian, CHICKASAW County, Iowa
Previously recorded in _____ in County Recorder's Office.
(book, page, document, number, etc.)

(Show reason for preparing this certificate, the evidence and detailed procedures used in establishing the corner positions and monumentation found or placed.)
Monument Description and Remarks:

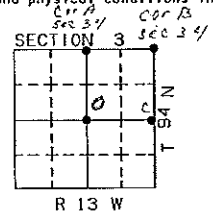
- ① E1/4 CORNER FOUND 1/2" REBAR
- ② N1/4 CORNER FOUND 1/2" REBAR
- ③ NORTHEAST CORNER FOUND 5/8" REBAR WITH CAP #7549
- ④ CENTER SET P&C AT FENCE CORNER

PLAN-VIEW

(Show a minimum of three reference ties to durable physical objects, relevant monuments and physical conditions that will enable recovery of corner.)

②
N1/4 COR.
FND. 1/2"
REBAR AS
PREVIOUSLY
RECORDED
BK. 170 PG. 203

③
NE COR.
FND. 5/8" REBAR
W/CAP #7549
AS PREVIOUSLY
RECORDED
BK. 170 PG. 204



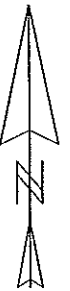
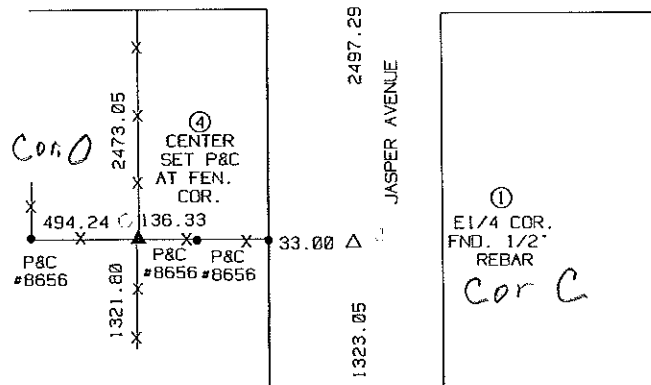
39-95-13
Cor A

LEVEL "C" ROAD

250TH STREET

△ 2662.76 △

Cor A
34-95-13



I hereby certify that the survey work was completed and this certificate was prepared by me or under my direct personal supervision and that I am a duly Licensed Land Surveyor under the laws of the State of Iowa.
Signature: Robert L. Holze
Robert L. Holze

Date: 1/16/2003 Reg. No. 8656

My registration renewal date is December 31, 2003.

List of Corners to be Indexed			
Corners	Section	Twp.	Range
① E1/4 COR.	3	94N	13W
② N1/4 COR.	3	94N	13W
③ NE COR.	3	94N	13W
④ CENTER	3	94N	13W

Filed 2-20-03