

2003-0322

Jan 30

PREPARED BY ROBERT L. HOLZE MID-WEST LAND SURVEYORS, INC., P.O. BOX 1352, MASON CITY, IOWA 50402-1352, (641)-423-1451

UNITED STATES PUBLIC LAND SURVEY CORNER CERTIFICATE

OF

Land Survey Monuments situated in Section 3, Township 94N, Range 13W, of the Fifth Principal Meridian, CHICKASAW County, Iowa. Previously recorded in _____ in County Recorder's Office.

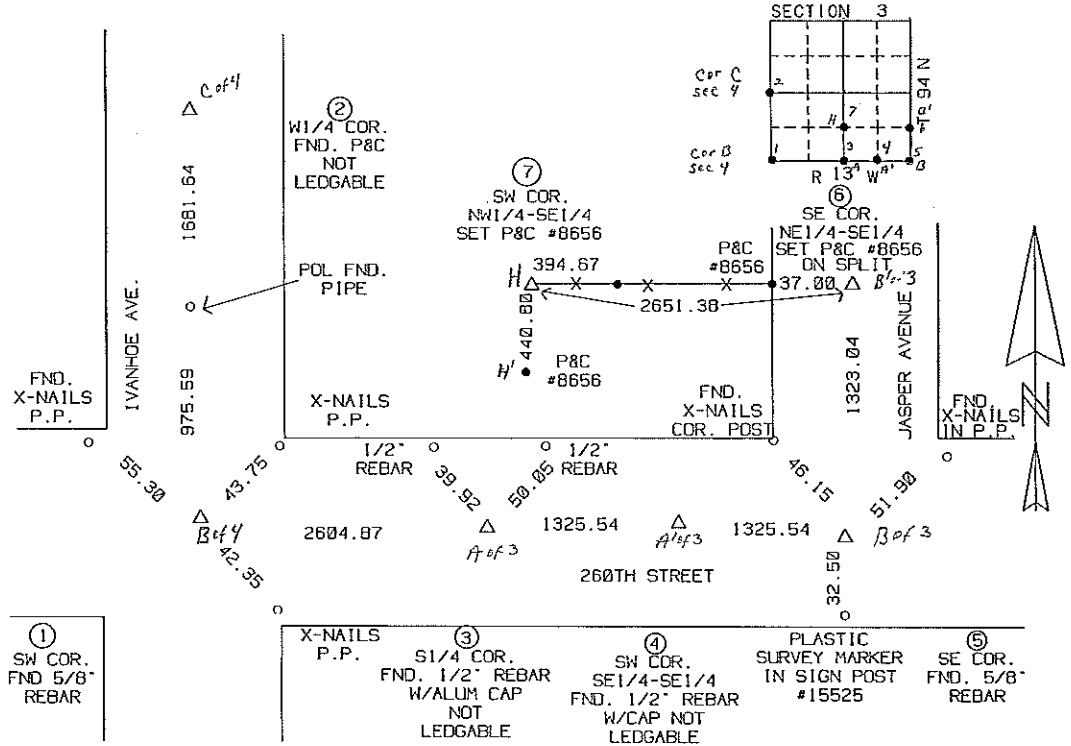
(book, page, document, number, etc.)

(Show reason for preparing this certificate, the evidence and detailed procedures used in establishing the corner positions and monumentation found or placed.)

- Monument Description and Remarks: (1) SOUTHWEST CORNER FOUND 5/8" REBAR (2) W1/4 CORNER FOUND P&C NOT LEDGABLE (7) SW COR. NW1/4-SE1/4 SET P&C #8656 (3) S1/4 CORNER FOUND 1/2" REBAR WITH ALUMINUM CAP NOT LEDGABLE (4) SOUTHWEST CORNER SE1/4-SE1/4 FOUND 1/2" REBAR WITH CAP NOT LEDGABLE (5) SOUTHEAST CORNER FOUND 5/8" REBAR (6) SOUTHEAST CORNER NE1/4-SE1/4 SET P&C #8656 ON SPLIT

PLAN - VIEW

(Show a minimum of three reference ties to durable physical objects, relevant monuments and physical conditions that will enable recovery of corner.)



I hereby certify that the survey work was completed and this certificate was prepared by me or under my direct personal supervision and that I am a duly Licensed and Surveyor under the laws of the State of Iowa. Signature: Robert L. Holze, Date: 1/16/2003, Reg. No. 8656

List of Corners to be Indexed table with columns: Corners, Section, Twp., Range. Includes entries for corners 1 through 7.

Filed 2-20-03

My registration renewal date is December 31, 2003.