

Prepared by & Return to: Harold - Reicks Surveying, 10 East Main Street, New Hampton, IA 50659, Ph. 641-394-2725

### UNITED STATES PUBLIC LAND SURVEY CORNER CERTIFICATE

Land Survey Monuments situated in Section 4, Township 94 North, Range 14 West of the Fifth Principal Meridian, Chickasaw County, Iowa. Previously not recorded in the County Recorder's office.

This certificate is being prepared in compliance with Iowa Code Chapter 355.11 because:

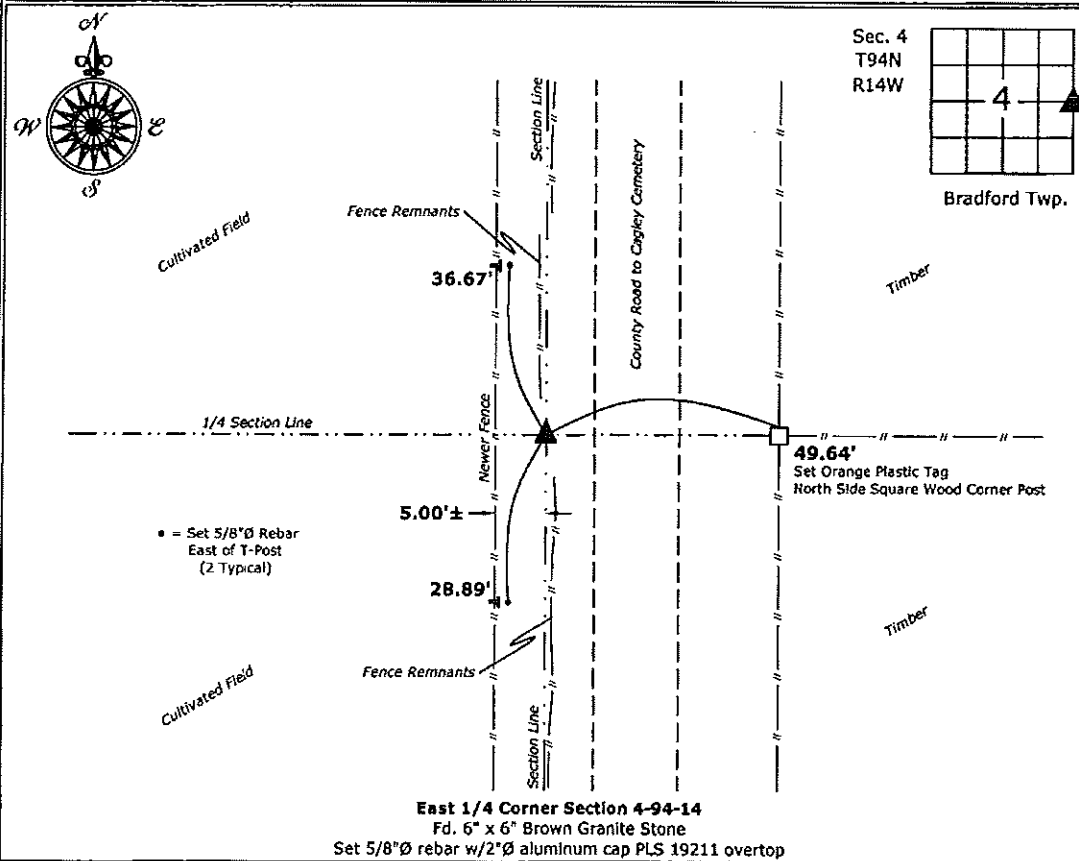
- There is no certificate on file for this corner.
- There are no longer three valid ties of record.
- There are changes to reference ties of record.
- There is change of monumentation of record.
- To clarify description of record monument (ties).

Monument Description and Remarks:

**East 1/4 Corner:** Found 6" x 6" Brown Granite Stone 36" deep with information obtained from the County Engineers office in Surveyor's Record Book, Pg. 139. Set 5/8"Ø rebar w/2"Ø aluminum cap PLS 19211 ovetop of the Stone to perpetuate the monument.

#### PLAN - VIEW

(Show a minimum of three reference ties to durable physical objects, relevant monuments and physical conditions that will enable recovery of the corner.)



**East 1/4 Corner Section 4-94-14**  
 Fd. 6" x 6" Brown Granite Stone  
 Set 5/8"Ø rebar w/2"Ø aluminum cap PLS 19211 ovetop



I hereby certify that this land surveying document was prepared and the related survey work was performed by me or under my direct personal supervision and that I am a duly licensed Land Surveyor under the laws of the State of Iowa.  
*Kirk D. Reicks* 12-3-14  
 Kirk D. Reicks Date:  
 License number 19211  
 My license renewal date is December 31, 2014.  
 Sheets covered by this seal: Individual sheet only

| List Corners to be Indexed       |         |      |       |
|----------------------------------|---------|------|-------|
| Corners                          | Section | Twp. | Range |
| E 1/4                            | 4       | 94   | 14    |
| Project Number: 2014-215         |         |      |       |
| FB: Chickasaw County 7, Pgs. 6-8 |         |      |       |