



Prepared by & Return to: Herold - Reicks Surveying, 10 East Main Street, New Hampton, IA 50659, Ph. 641-394-2725

United States Public Land Survey Corner Certificate

Land Survey Monument situated in
 Section 4, Township 94 North, Range 13 West of the Fifth Principal Meridian, Chickasaw County, Iowa.
 On file in Document #2002-0644 in the County Recorder's office.

This certificate is being prepared in compliance with Iowa Code Chapter 355.11 because:

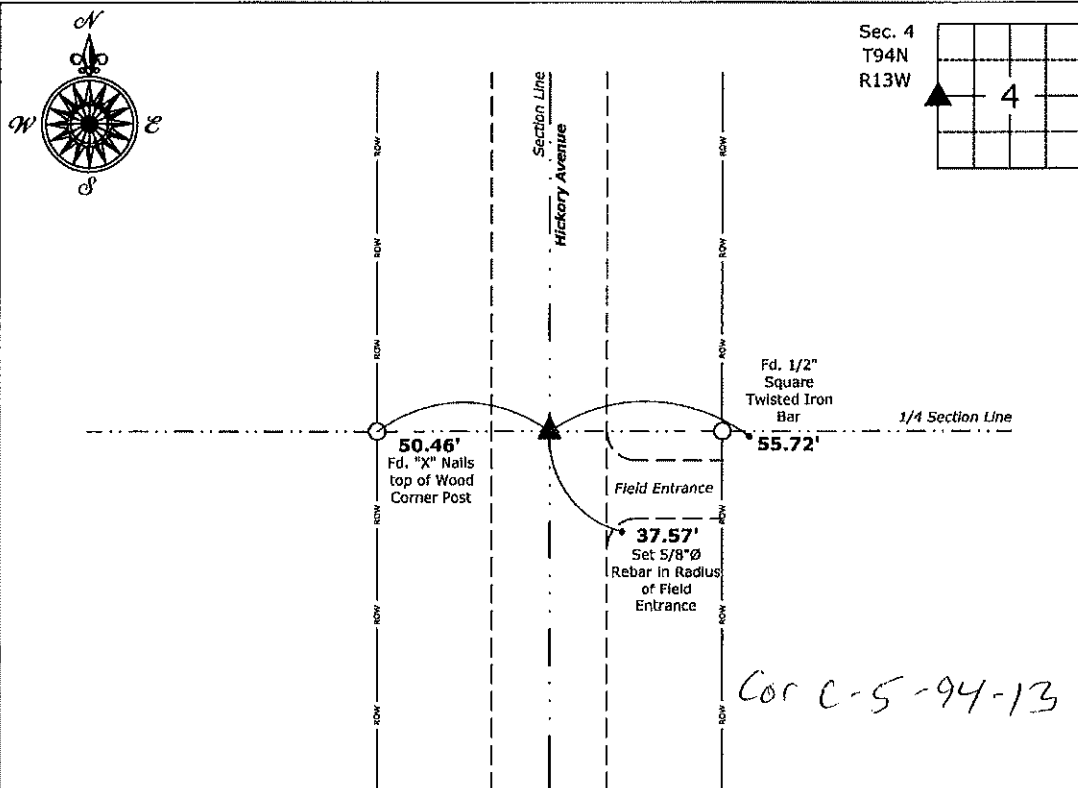
- There is no certificate on file for this corner.
- There are no longer three valid ties of record.
- There are changes to reference ties of record.
- There is change of monumentation of record.
- To clarify description of record monument (ties).

Monument Description and Remarks:

West 1/4 Corner: Found 1/2"Ø Rebar with 2"Ø Aluminum Cap PLS 15525 with information obtained from the previously recorded Section Corner Certificate.

Plan View

(Show a minimum of three reference ties to durable physical objects, relevant monuments and physical conditions that will enable recovery of the corner.)



West 1/4 Corner of Section 4-94-13
 Fd. 1/2"Ø Rebar w/2"Ø Aluminum Cap PLS 15525



I hereby certify that this land surveying document was prepared and the related survey work was performed by me or under my direct personal supervision and that I am a duly licensed Land Surveyor under the laws of the State of Iowa.

Kirk D. Reicks 6-8-2020
 Kirk D. Reicks Date:

License number 19211
 My license renewal date is December 31, 2020.
 Sheets covered by this seal: Individual sheet only

List Corner to be Indexed

| Corner | Section | Twp. | Range |
|--------|---------|------|-------|
| W 1/4 | 4 | 94 | 13 |

Project Number: 2020-054

F8: Chickasaw 9, Pgs. 73-74

Section 5-94-13
 As referred to in
 Eng. Tie Book

FILED 2002-0644
 RECORDER'S OFFICE
 CHICKASAW COUNTY, IOWA
 2902 MAR 8 AM 9 11
 CINDY MESSERSMITH
 COUNTY RECORDER

TEKIPPE ENGINEERING, P.C., 128 South Vine Street, West Union, Iowa 52175 Phone (563) 422-5131

UNITED STATES PUBLIC LAND SURVEY CORNER CERTIFICATE

OF 5
 Land Survey Monuments situated in Section 4, Township 94 North, Range 13 West of the Fifth Principal Meridian, CHICKASAW County, Iowa.
 Previously recorded in none in County Recorder's Office.
(book, page, document number, etc.)

(Show reason for preparing this certificate, the evidence and detailed procedures used in establishing the corner positions and monumentation found or placed.)

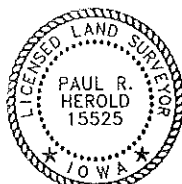
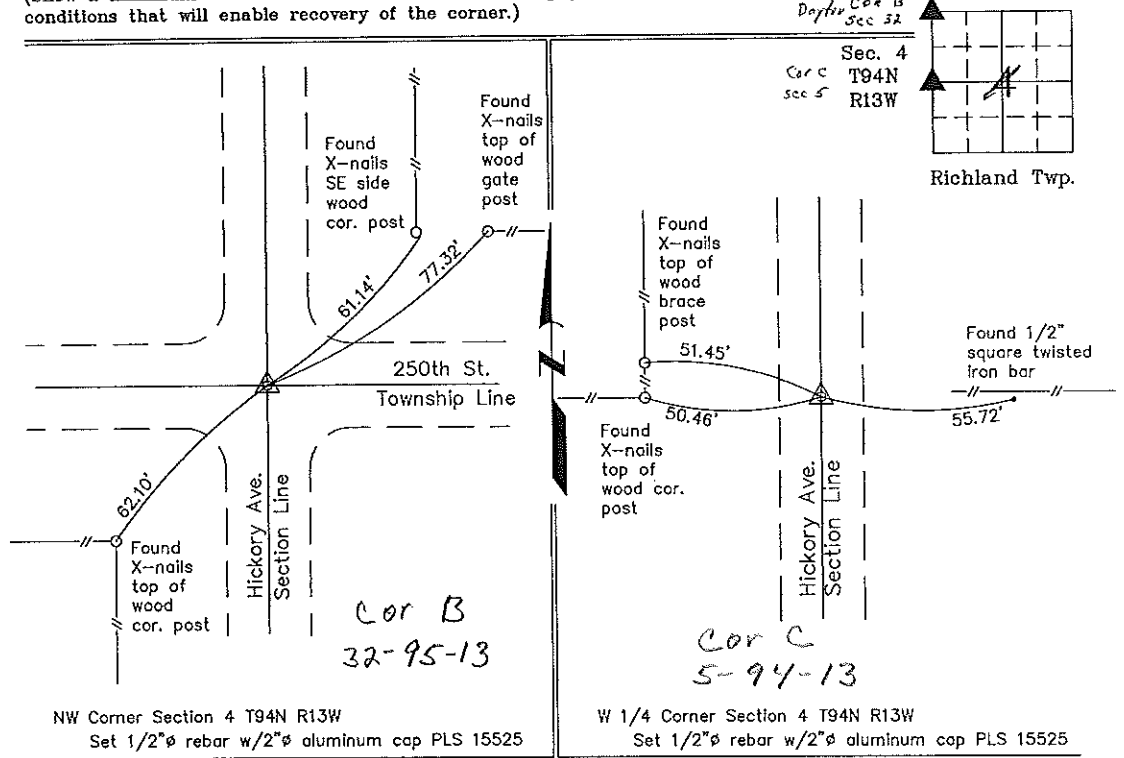
Monument Description and Remarks: NW Corner Section 4 T94N R13W: Set 1/2"Ø rebar w/2"Ø aluminum cap PLS 15525 from Chickasaw County Engineer reference ties in Field Book Dayton Twp. Corner Ties, Section 32, Corner 'B.'

W 1/4 Corner Section 4 T94N R13W: Set 1/2"Ø rebar w/2"Ø aluminum cap PLS 15525 from Chickasaw County Engineer reference ties in Field Book Richland Twp. Corner Ties Section 5, Corner 'C.'

PLAN - VIEW

49413ak.dwg Project Number 02045.LS
 FB. 46J PG. 2-3

(Show a minimum of three reference ties to durable physical objects, relevant monuments and physical conditions that will enable recovery of the corner.)



I hereby certify that this land surveying document was prepared and the related survey work was performed by me or under my direct personal supervision and that I am a duly licensed Land Surveyor under the laws of the State of Iowa.

Paul R. Herold 3-7-02
 Paul R. Herold Date
 License number 15525
 My license renewal date is December 31, 2002.
 Sheets covered by this seal: Individual

| List Corners to be Indexed | | | |
|----------------------------|---------|------|-------|
| Corners | Section | Twp. | Range |
| NW | 4 | 94N | 13W |
| W 1/4 | 4 | 94N | 13W |

Entered 3-11-02

County Engineer's Copy