

Section 5-94-13
 As referred to in
 Eng. Tie Book

FILED 2002-0644
 RECORDER'S OFFICE
 CHICKASAW COUNTY, IOWA
 2902 MAR 8 AM 9 11
 CINDY MESSERSMITH
 COUNTY RECORDER

TEKIPPE ENGINEERING, P.C., 128 South Vine Street, West Union, Iowa 52175 Phone (563) 422-5131

UNITED STATES PUBLIC LAND SURVEY CORNER CERTIFICATE

OF 5
 Land Survey Monuments situated in Section 4, Township 94 North, Range 13 West of the Fifth Principal Meridian, CHICKASAW County, Iowa.
 Previously recorded in none in County Recorder's Office.
(book, page, document number, etc.)

(Show reason for preparing this certificate, the evidence and detailed procedures used in establishing the corner positions and monumentation found or placed.)

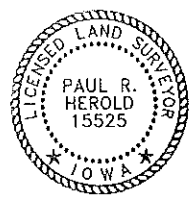
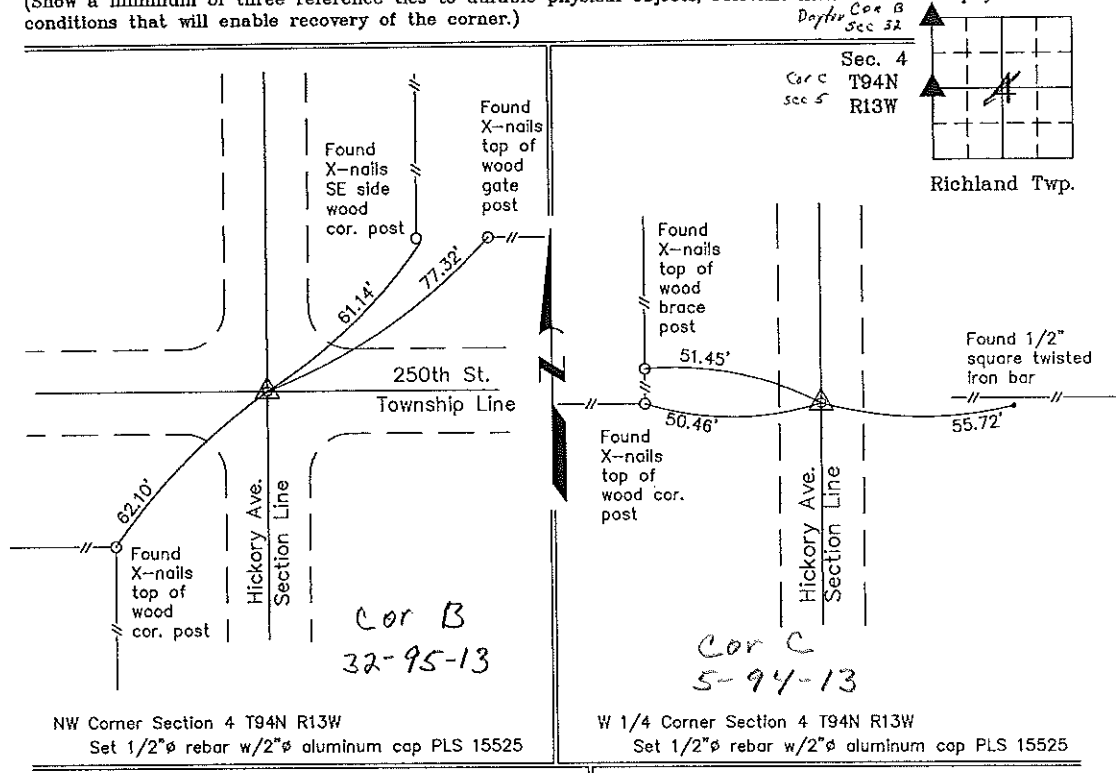
Monument Description and Remarks: NW Corner Section 4 T94N R13W: Set 1/2"Ø rebar w/2"Ø aluminum cap PLS 15525 from Chickasaw County Engineer reference ties in Field Book Dayton Twp. Corner Ties, Section 32, Corner 'B.'

W 1/4 Corner Section 4 T94N R13W: Set 1/2"Ø rebar w/2"Ø aluminum cap PLS 15525 from Chickasaw County Engineer reference ties in Field Book Richland Twp. Corner Ties Section 5, Corner 'C.'

PLAN - VIEW

49413ak.dwg Project Number 02045.LS
 FB. 46J PG. 2-3

(Show a minimum of three reference ties to durable physical objects, relevant monuments and physical conditions that will enable recovery of the corner.)



I hereby certify that this land surveying document was prepared and the related survey work was performed by me or under my direct personal supervision and that I am a duly licensed Land Surveyor under the laws of the State of Iowa.

Paul R. Herold 3-7-02
 Paul R. Herold Date
 License number 15525
 My license renewal date is December 31, 2002.
 Sheets covered by this seal: Individual

List Corners to be Indexed			
Corners	Section	Twp.	Range
NW	4	94N	13W
W 1/4	4	94N	13W

Entered 3-11-02

County Engineer's Copy