

Section 6-94-13
As referred to in
Engr. Tit Book

Filed 2002-057
2002 Mar 1 Am 10:32

PREPARED BY ROBERT L. HOLZE MID-WEST LAND SURVEYORS, INC., P.O. BOX 1352, MASON CITY, IOWA 50402-1352, (641)-423-1451

UNITED STATES PUBLIC LAND SURVEY CORNER CERTIFICATE

OF 6

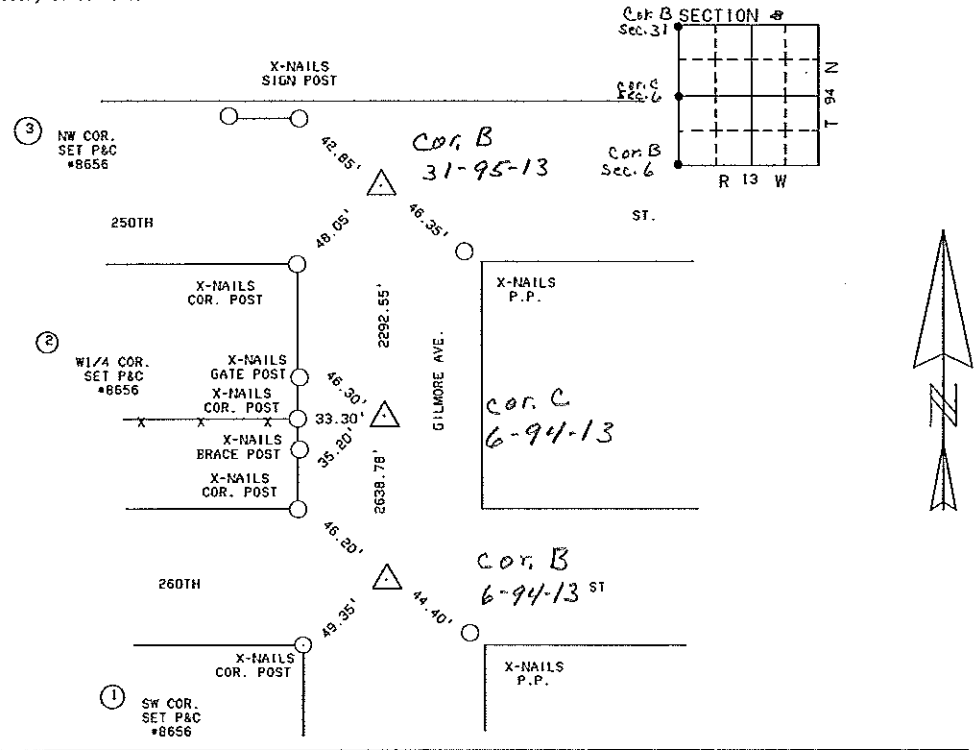
Land Survey Monuments situated in Section 5, Township 94 N, Range 13 W, of the Fifth Principal Meridian, CHICKASAW County, Iowa Previously recorded in _____ In County Recorder's Office.

(Show reason for preparing this certificate, the evidence and detailed procedures used in establishing the corner positions and monumentation found or placed.)
Monument Description and Remarks:

- ① SW CORNER SET P&C #8656 BY SPLITTING RIGHT OF WAYS
- ② W1/4 CORNER SET P&C #8656 ON LINE ON FENCE LINE WEST
- ③ NW CORNER SET P&C #8656 BY SPLITTING RIGHT OF WAYS

PLAN-VIEW

(Show a minimum of three reference ties to durable physical objects, relevant monuments and physical conditions that will enable recovery of corner.)



I hereby certify that the survey work was completed and this certificate was prepared by me or under my direct personal supervision and that I am a duly Licensed Land Surveyor under the laws of the State of Iowa.

Signature: Robert L. Holze
Robert L. Holze
Date: 2/25/2002 Reg. No. 8656

My registration renewal date is December 31, 2003

List of Corners to be Indexed

Corners	Section	Twp.	Range
① SW COR.	5	94	13
② W1/4	5	94	13
③ NW COR.	5	94	13

Entered 3-6-02