



Prepared by & Return to: Herold - Reicks Surveying, 10 East Main Street, New Hampton, IA 50659, Ph. 641-394-2725

### United States Public Land Survey Corner Certificate

Land Survey Monument situated in  
 Section 4, Township 94 North, Range 13 West of the Fifth Principal Meridian, Chickasaw County, Iowa.  
 On file in Document #2006-0136 in the County Recorder's office.

This certificate is being prepared in compliance with Iowa Code Chapter 355.11 because:



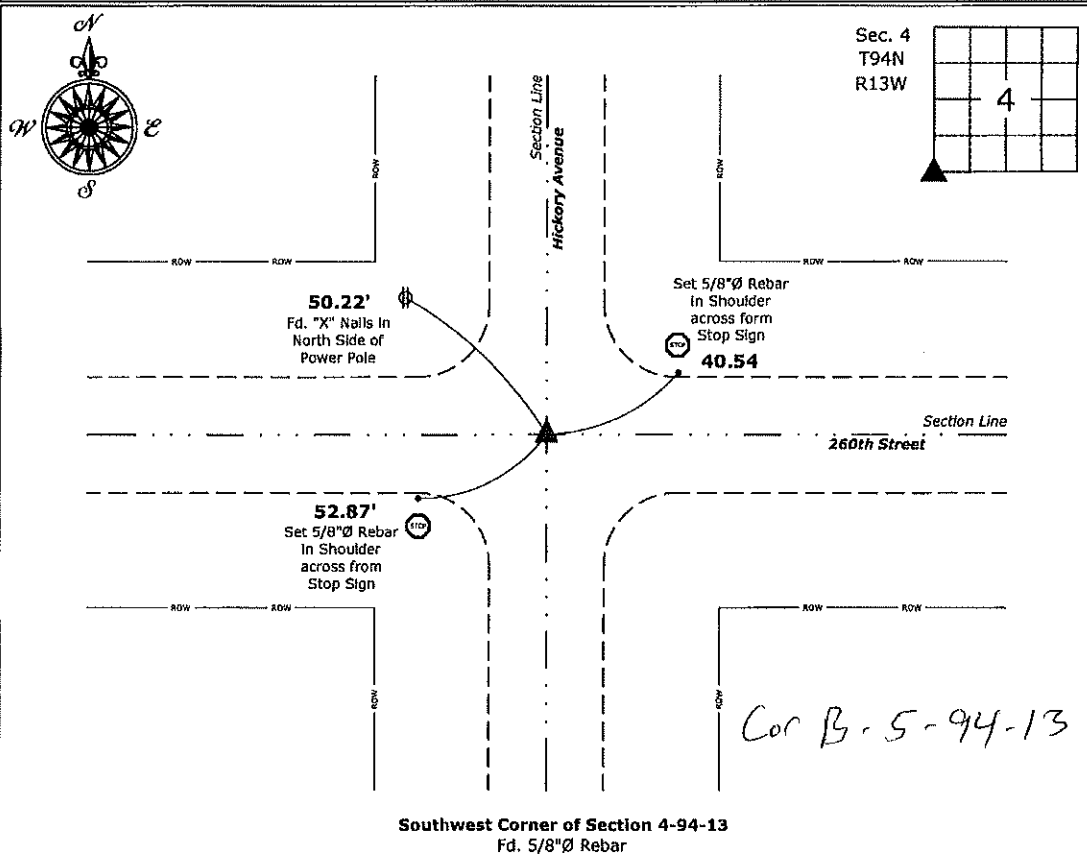
- There is no certificate on file for this corner.
- There are no longer three valid ties of record.
- There are changes to reference ties of record.
- There is change of monumentation of record.
- To clarify description of record monument (ties).

**Monument Description and Remarks:**

**Southwest Corner:** Found 5/8"Ø Rebar with information obtained from the previously recorded Section Corner Certificate.

### Plan View

(Show a minimum of three reference ties to durable physical objects, relevant monuments and physical conditions that will enable recovery of the corner.)



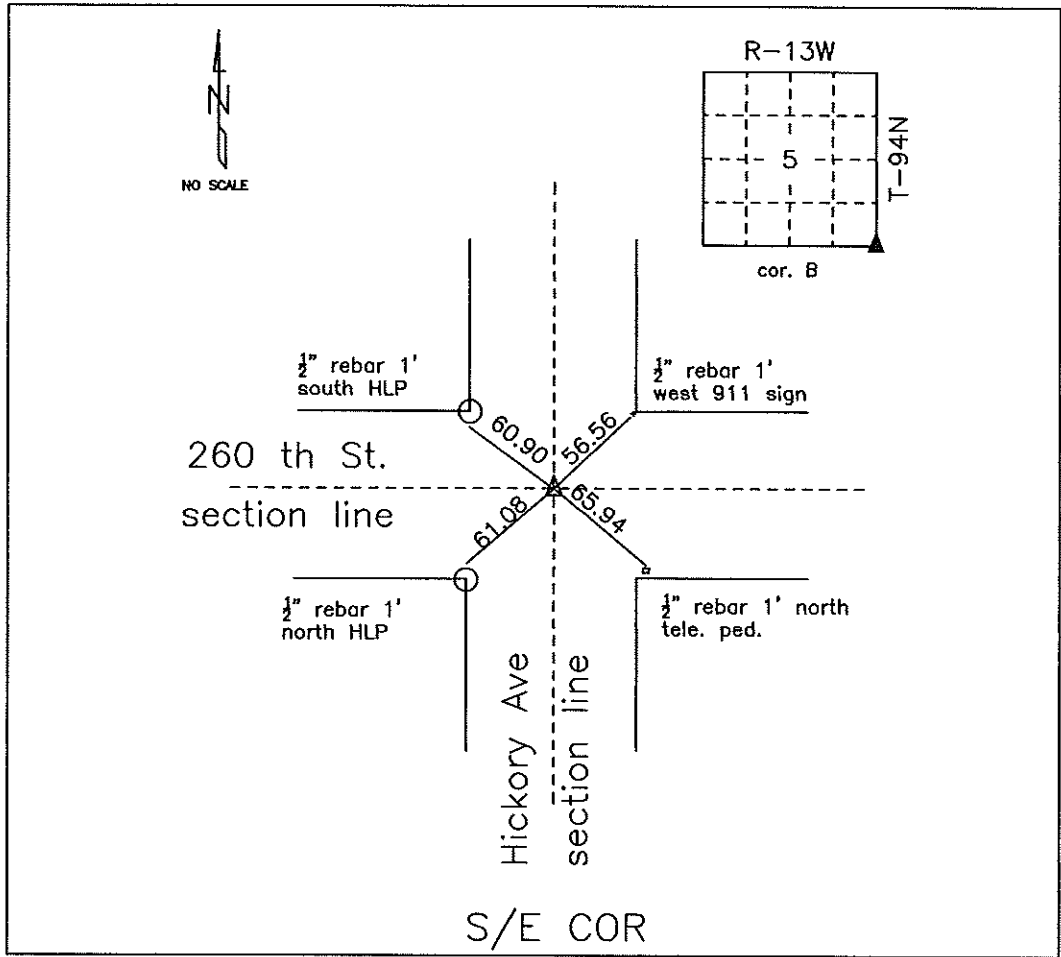
I hereby certify that this land surveying document was prepared and the related survey work was performed by me or under my direct personal supervision and that I am a duly licensed Land Surveyor under the laws of the State of Iowa.  
*Kirk D. Reicks* 6-8-2020  
 Kirk D. Reicks Date:  
 License number 19211  
 My license renewal date is December 31, 2020.  
 Sheets covered by this seal: Individual sheet only

List Corner to be Indexed			
Corner	Section	Twp.	Range
SW	4	94	13
Project Number: 2020-054			
FB: Chickasaw 9, Pgs. 73-74			

File: S:\... Projects - NHO\County Control Systems - NHO\CHICKASAW\CHICK-40\CHICK-40 - 2020.dwg, 6/8/2020 12:09:34 PM

# COUNTY ENGINEER'S SECTION CORNER PRESERVATION RECORD

LAND SURVEY MONUMENT LOCATED IN SECTION 5, TOWNSHIP 94 N  
 NORTH, RANGE 13 W, OF THE 5TH P.M. CHICKASAW COUNTY, IOWA  
 PREVIOUSLY RECORDED Bk 2006 - Pg 0136



**MONUMENT DESCRIPTION AND NARRATIVE** Found 5/8" steel bar

Previously recorded as the N/W corner of sec. 9-94-13 by Lindsay Erdman. All previous ties were missing.

All ties are GPS surveyed.

I AM NOT A REGISTERED LAND SURVEYOR UNDER THE LAWS OF THE STATE OF IOWA

JIM FOSTER CHICKASAW CO. DATE: 10/26/10

Section 5-94-13  
 As referred to in  
 Engg. Title Book

Chickasaw Co Recorder: Cindy Messersmith  
 FEE BOOK: 2006-0136 1/17/2006 @ 09:16AM  
 SEC SEC COR CERT Book: Page: #: 1  
 Total Fees: \$7.00

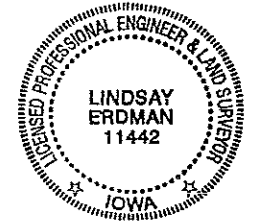
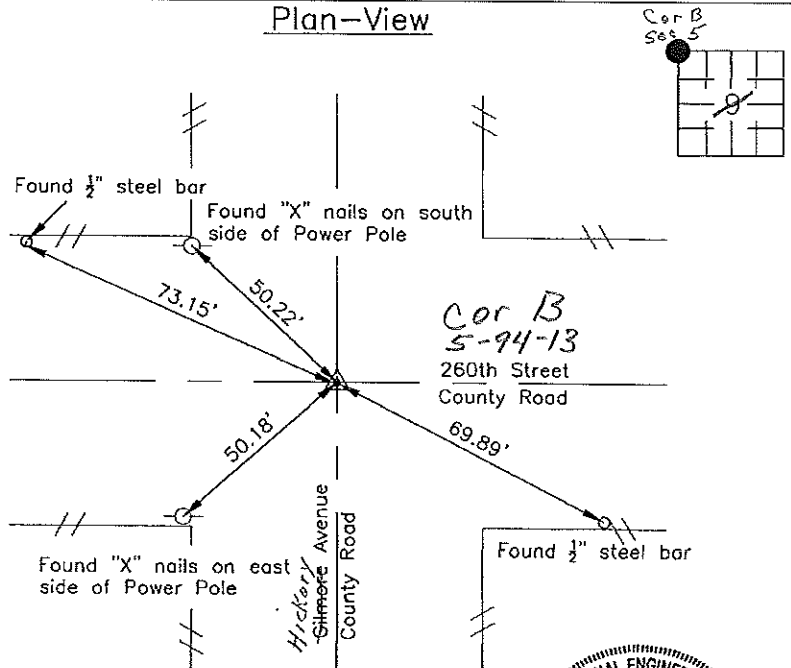
Prepared by: Erdman Engineering, P.C., 708 Commerce Drive, P.O. Box 246, Decorah, Iowa 52101 (563) 382-4194

United States Public Land Survey Corner Certificate

of 5  
 Land Survey Monuments situated in Section 9, Township 94, Range 13 West of  
 the 5th Principal Meridian in Chickasaw County, Iowa. Previously recorded in  
does not apply in the county Recorder's Office.

Monument Description and Remarks: This certificate is prepared in accordance with Section 193C of the Code of Iowa. No previous certificate has been filed for this corner location. Based on Chickasaw County Engineer's Reference Ties we found two sets of "X" nails and two 1/2" diameter steel bars that had been used previously as tie markers. County Engineer's Reference Ties show that an iron pin had been found in 1954, 1956 and 1972. From the ties we found a 5/8" diameter steel bar down ±12" below the crushed rock surface at the approximate centerline-centerline intersection of the county roads. We used the bar as the NW Corner of Section 9, Township 94 North, range 13 West.

Plan-View



I hereby certify that this land surveying document was prepared and the related survey work was performed by me or under my direct personal supervision and that I am a duly Licensed Land Surveyor under the laws of the State of Iowa.

Signature: Lindsay Erdman  
 Lindsay Erdman, P.E. and P.L.S. Iowa License Number 11442

Date: 1/16/06

My license renewal date is December 31, 2008

Corner(s) to be Indexed

Corner	Section	Township	Range
NW	9	94	13