

Chickasaw Co. Recorder
 Cindy Messersmith
Fee Book 2009-0457
 03/09/2009 @0322PM
 SCC SEC COR CERT
 Book: Page: # Pages: 1
 Total Fees: \$7.00

Section 9-94-13
 As referred to in
 Engr. Tie Book

PREPARED BY : North Star Land Surveyors LLC, 107 Pina Street, New Hampton, IA 50659, Phone : 641-394-3448

UNITED STATES PUBLIC LAND CORNER CERTIFICATE

OF: 9

Land Survey Monuments situated in Section 10, Township 94 North, Range 13 West of the Fifth Principal Meridian, Chickasaw County, Iowa. Previously recorded in bk 162 pg 377 in Office of County Recorder.

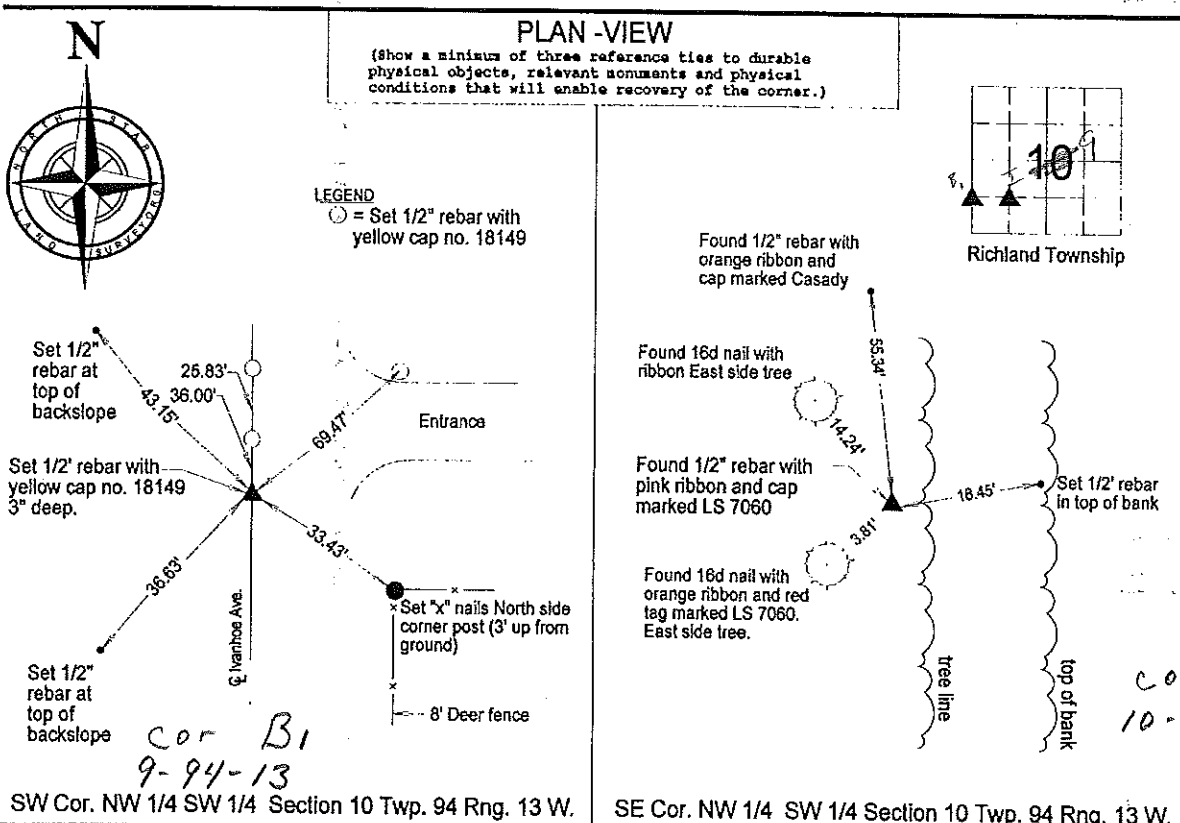
(book, page, document number, etc.)

(Show reason for preparing this certificate, the evidence and detailed procedures used in establishing the corner positions and monumentation found or placed.)

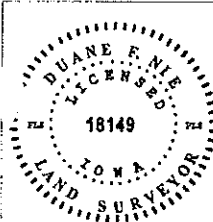
Monument Description and Remarks :

SW Cor. NW 1/4 SW 1/4 Section 10 Twp. 94 Rng. 13 W. : Set 1/2" rebar with yellow cap no. 18149, per Corner Certificate by Lyle Tekippe in bk 162 deeds pg 377 in Office of Chickasaw County Recorder. Dug 6" dia. hole 4" deep. Did not get reading with magnetic locator. Did not find previous monument by Lyle Tekippe. Did not find previous reference ties by Lyle Tekippe. Set monument equidistant between SW Cor. and W 1/4 of said section 10.
 Reason for recording: New corner monument and new ties.

SE Cor. NW 1/4 SW 1/4 Section 10 Twp. 94 Rng. 13 W. : Found 1/2" rebar with pink ribbon and cap marked LS 7060 per ref. ties on Corner Certificate by Lyle Tekippe recorded in book 162 page 377 Office of Chickasaw County Recorder.
 Reason for recording: Did not find third tie to tree SW. Added ties to perpetuate corner.



COR I
 10-94-13



I hereby certify that this land surveying document was prepared and the related survey work was performed by me or under my direct personal supervision and that I am a duly LICENSED LAND SURVEYOR under the laws of the State of IOWA.

Duane F. Nie March 9, 2009
 Duane F. Nie License number 18149 Date
 My license renewal date is December 31, 2010
 Pages or sheets covered by this seal. This sheet only

List Corners to be Indexed			
Corner	Section	Township	Range
SW Cor. NW 1/4 SW 1/4	10	94	13
SE Cor. NW 1/4 SW 1/4	10	94	13

Section 9-94-13
 As referred to in
 Engg. Tric Book

TEKIPPE ENGINEERING, P.C., 128 South Vine Street, West Union, Iowa 52175 Phone (319) 422-5131

UNITED STATES PUBLIC LAND SURVEY CORNER CERTIFICATE

OF 9

Land Survey Monuments situated in Section 10, Township 94 North, Range 13 West, of the Fifth Principal Meridian, CHICKASAW County, Iowa.

Previously recorded in NONE in County Recorder's Office.

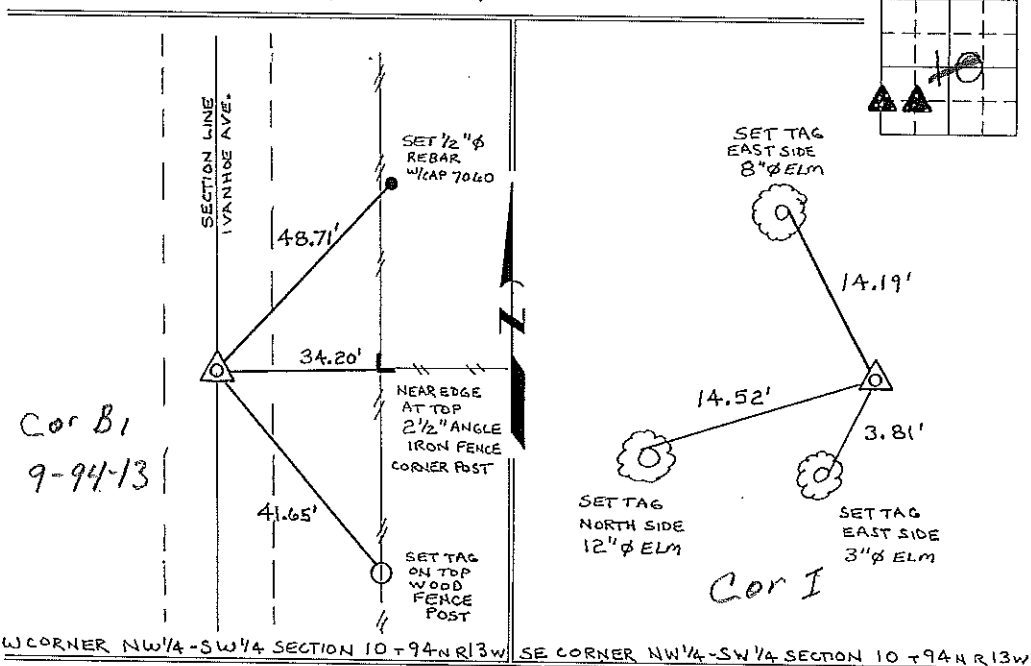
(book, page, document number, etc.)
 (Show reason for preparing this certificate, the evidence and detailed procedures used in establishing the corner positions and monumentation found or placed.)

Monument Description and Remarks: SW CORNER NW 1/4-SW 1/4 SECTION 10 T 94N R 13W: SET 1/2" ϕ REBAR 1/4" CAP 7060, EQUADISTANT AND ON LINE BETWEEN THE SW CORNER AND W 1/4 CORNER.

SE CORNER NW 1/4-SW 1/4 SECTION 10 T 94N R 13W: SET 1/2" ϕ REBAR 1/4" CAP 7060 RECORD DISTANCE FROM THE SW CORNER SE 1/4-SW 1/4, BASED ON A SURVEY AND PLAT MADE BY PAUL H. HELLAND, RECORDED APRIL 18, 1979, DEEDS BOOK 119, PAGES 362-365, AND A SURVEY AND PLAT MADE BY GARY L. CASADY, RECORDED DECEMBER 17, 1993, DEEDS BOOK 153, PAGES 415-417, BOTH ON FILE IN THE CHICKASAW CO. RECORDERS OFFICE

PLAN - VIEW

(Show a minimum of three reference ties to durable physical objects, relevant monuments and physical conditions that will enable recovery of the corner.)



I hereby certify that the survey work was completed and this certificate was prepared by me or under my direct personal supervision and that I am a duly registered land surveyor under the laws of the state of Iowa.

Signature: *Lyle G. Tekippe*
 Lyle G. Tekippe

Date: 11-1-96 Reg. No. 7060
 My Registration Renewal Date is December 31, 1996



Corners	Section	Twp.	Range
SW-NW-SW	10	94N	13W
Cor B1	9-94-13		
SE-NW-SW	10	94N	13W
Cor X	10-94-13		

Placed in Tric Book
 11/20/96
 JFM