



Prepared by & Return to: Herold - Reicks Surveying, 10 East Main Street, New Hampton, IA 50659, Ph. 641-394-2725

United States Public Land Survey Corner Certificate

Land Survey Monument situated in
 Section 9, Township 94 North, Range 13 West of the Fifth Principal Meridian, Chickasaw County, Iowa.
 On file in Document #2006-0134 in the County Recorder's office.

This certificate is being prepared in compliance with Iowa Code Chapter 355.11 because:

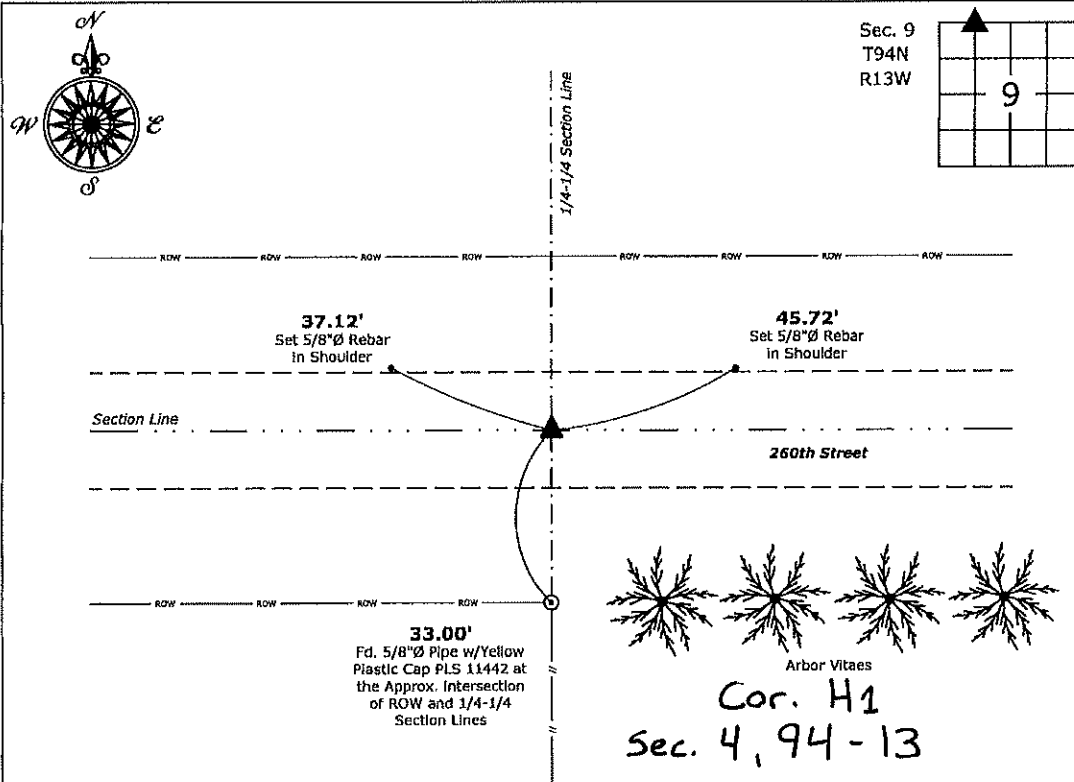
- There is no certificate on file for this corner.
- There are no longer three valid ties of record.
- There are changes to reference ties of record.
- There is change of monumentation of record.
- To clarify description of record monument (ties).

Monument Description and Remarks:

Northeast Corner of the NW 1/4 - NW 1/4: Found 1/2"Ø Rebar w/Yellow Plastic Cap PLS 11442 with information obtained from the previously recorded Section Corner Certificate.

Plan View

(Show a minimum of three reference ties to durable physical objects, relevant monuments and physical conditions that will enable recovery of the corner.)



Northeast Corner of the NW 1/4 - NW 1/4 of Section 9-94-13
 Found 1/2"Ø Rebar w/Yellow Plastic Cap PLS 11442



I hereby certify that this land surveying document was prepared and the related survey work was performed by me or under my direct personal supervision and that I am a duly licensed Land Surveyor under the laws of the State of Iowa.
Kirk D. Reicks 6-21-2021
 Kirk D. Reicks Date:
 License number 19211
 My license renewal date is December 31, 2022.
 Sheets covered by this seal: Individual sheet only

List Corner to be Indexed			
Corner	Section	Twp.	Range
NE-NW-NW	9	94	13
Project Number: 2021-042			
FB: Chickasaw 10, Pgs. 66-67			

File: S:\Projects - NHO\County Control Systems - NHO\CHICKASAW\CHICK-40\CHICK-40 - 2020.dwg, 6/21/2021 3:52:07 PM