

Herold - Reicks Surveying, 25 1/2 East Main Street, Suite 204, New Hampton, IA 50659, Ph. 641-394-2725

UNITED STATES PUBLIC LAND SURVEY CORNER CERTIFICATE

Land Survey Monuments situated in Section 10, Township 95 North, Range 11 West of the Fifth Principal Meridian, Chickasaw County, Iowa. Not previously recorded in the County Recorder's office.

This certificate is being prepared in compliance with Iowa Code Chapter 355.11 because:

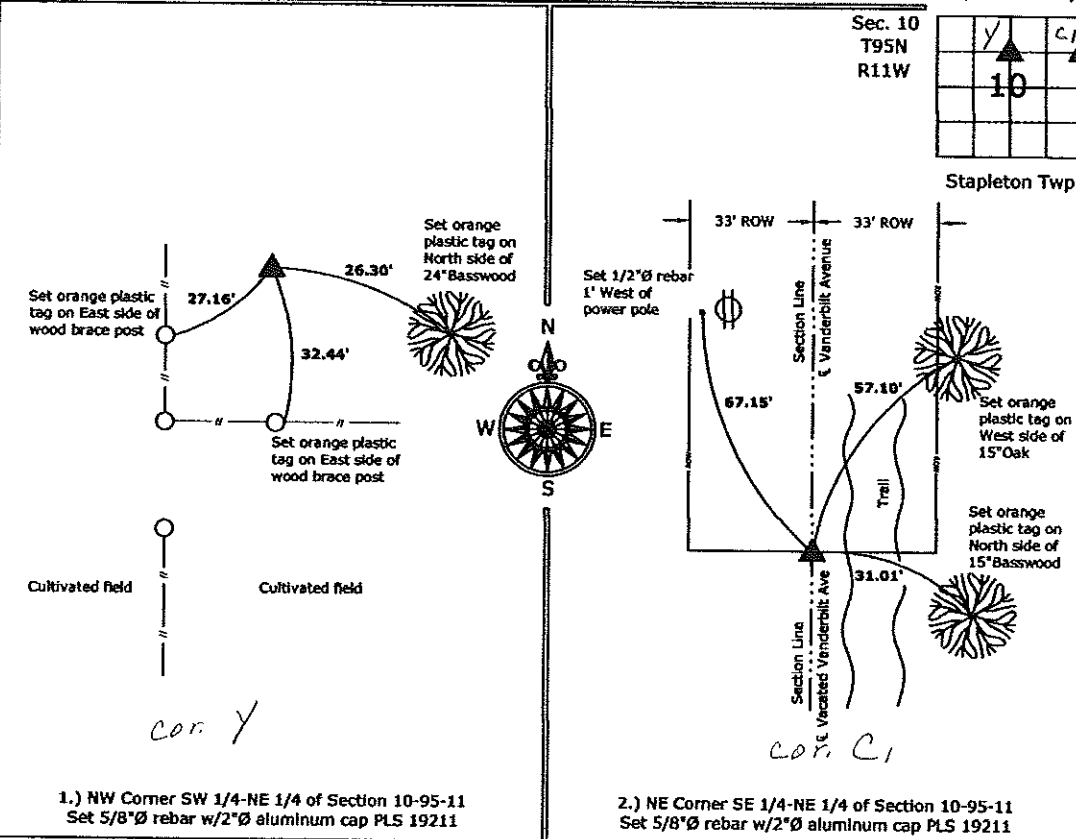
- There is no certificate on file for this corner.
- There are no longer three valid ties of record.
- There are changes to reference ties of record.
- There is change of monumentation of record.
- To clarify description of record monument (ties).

Monument Description and Remarks:

- 1.) **NW Corner of the SW 1/4-NE 1/4:** Set 5/8"Ø rebar with 2"Ø aluminum cap PLS 19211 equidistant and online between the Center of Section and the North 1/4 Corner.
- 2.) **NE Corner of the SE 1/4-NE 1/4:** Set 5/8"Ø rebar with 2"Ø aluminum cap PLS 19211 equidistant and online between the NE Corner and the East 1/4 Corner.

PLAN - VIEW

(Show a minimum of three reference ties to durable physical objects, relevant monuments and physical conditions that will enable recovery of the corner.)



1.) NW Corner SW 1/4-NE 1/4 of Section 10-95-11
 Set 5/8"Ø rebar w/2"Ø aluminum cap PLS 19211

2.) NE Corner SE 1/4-NE 1/4 of Section 10-95-11
 Set 5/8"Ø rebar w/2"Ø aluminum cap PLS 19211



I hereby certify that this land surveying document was prepared and the related survey work was performed by me or under my direct personal supervision and that I am a duly licensed Land Surveyor under the laws of the State of Iowa.

Kirk D. Reicks 4-9-09
 Kirk D. Reicks Date:
 License number 19211
 My license renewal date is December 31, 2010.
 Sheets covered by this seal: Individual sheet only

List Corners to be Indexed			
Corners	Section	Twp.	Range
NW-SW-NE	10	95	11
NE-SE-NE	10	95	11

Project Number: 2009-041
 FB: Chickasaw County 3, Pgs. 29-30

File: S:_Projects\2009-041.dwg, 4/3/2009 8:28:44 AM