

Chickasaw Co. Recorder
 Cindy Messersmith
Fee Book 2009-0696
 04/09/2009 @0140PM
 SCC SEC COR CERT
 Book: Page: # Pages: 1
 Total Fees: \$7.00

cor. B
 3-95-11
 As referred to
 in Engr. Tie Book

Herold - Reicks Surveying, 25 1/2 East Main Street, Suite 204, New Hampton, IA 50659, Ph. 641-394-2725

UNITED STATES PUBLIC LAND SURVEY CORNER CERTIFICATE

Land Survey Monuments situated in Section **10**, Township **95** North, Range **11** West of the Fifth Principal Meridian, **Chickasaw** County, Iowa. Previously recorded in 1.) Bk. 169, Pg. 349, 2.) N/A in the County Recorder's office.

This certificate is being prepared in compliance with Iowa Code Chapter 355.11 because:

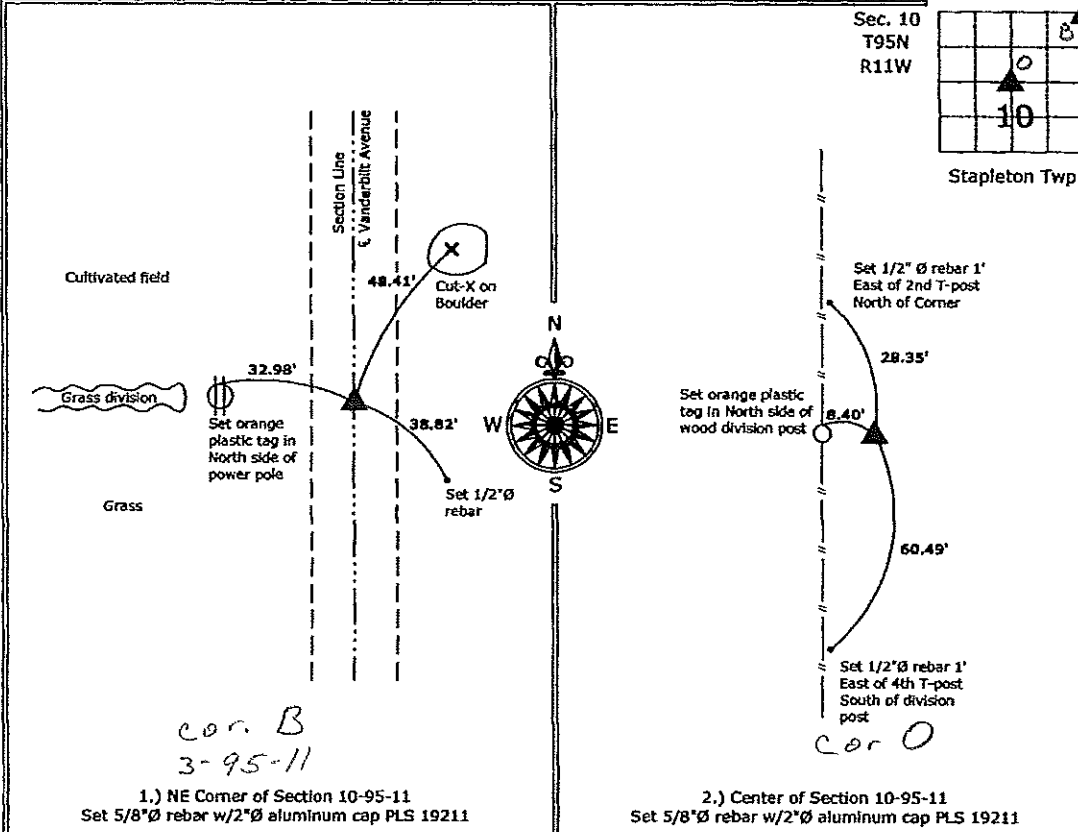
- 2. There is no certificate on file for this corner.
- There are no longer three valid ties of record.
- There are changes to reference ties of record.
- There is change of monumentation of record.
- 1. To clarify description of record monument (ties).

Monument Description and Remarks:

- 1.) **NE Corner:** Searched area as described from previous corner certificate. No monument was found. The position established by previous certificate appears to be in error. The distance from the W 1/4 corner of Section 2-95-11 was listed as 3362.75', almost 723' longer than a nominal half mile. Set 5/8"Ø rebar with 2" aluminum cap PLS 19211 at the intersection of the centerline of Vanderbilt Avenue and a line from the N 1/4 to and across 2 found monuments from a Plat of Survey made by Thomas V. Craft, recorded in Book 129, Page 288.
- 2.) **Center of Section:** Set 5/8"Ø rebar with 2" aluminum cap PLS 19211 (Buried 18" deep) at the intersection of 1/4 Section lines.

PLAN - VIEW

(Show a minimum of three reference ties to durable physical objects, relevant monuments and physical conditions that will enable recovery of the corner.)



1.) NE Corner of Section 10-95-11
 Set 5/8"Ø rebar w/2"Ø aluminum cap PLS 19211

2.) Center of Section 10-95-11
 Set 5/8"Ø rebar w/2"Ø aluminum cap PLS 19211



I hereby certify that this land surveying document was prepared and the related survey work was performed by me or under my direct personal supervision and that I am a duly licensed Land Surveyor under the laws of the State of Iowa.
Kirk D. Reicks 4-9-09
 Kirk D. Reicks Date:
 License number 19211
 My license renewal date is December 31, 2010.
 Sheets covered by this seal: Individual sheet only

| List Corners to be Indexed | | | |
|----------------------------|---------|------|-------|
| Corners | Section | Twp. | Range |
| NE | 10 | 95 | 11 |
| CTR | 10 | 95 | 11 |

Project Number: 2009-041
 FB: Chickasaw County 3, Pgs. 29-30

File: S:\Projects\2009\2009-041\img\2009-041.dwg, 4/3/2009 8:31:02 AM