

Chickasaw Co. Recorder
 Cindy Messersmith
Fee Book 2008-0085
 01/11/2008 @0411PM
 SCC SEC COR CERT
 Book: Page: # Pages: 1
 Total Fees: \$7.00

Section 11-95-11
 As referred to in
 Engr Tie Book

Herold - Recks Surveying, 25 1/2 East Main Street, Suite 204, New Hampton, IA 50659, Ph. 641-394-2725

UNITED STATES PUBLIC LAND SURVEY CORNER CERTIFICATE

Land Survey Monuments situated in:
 Section 11, Township 95 North, Range 11 West of the Fifth Principal Meridian,
Chickasaw County, Iowa. Previously recorded in 1.) Bk. 154, Pg. 362 2.) None
 in County Recorder's Office. (book, page, document number, etc.)

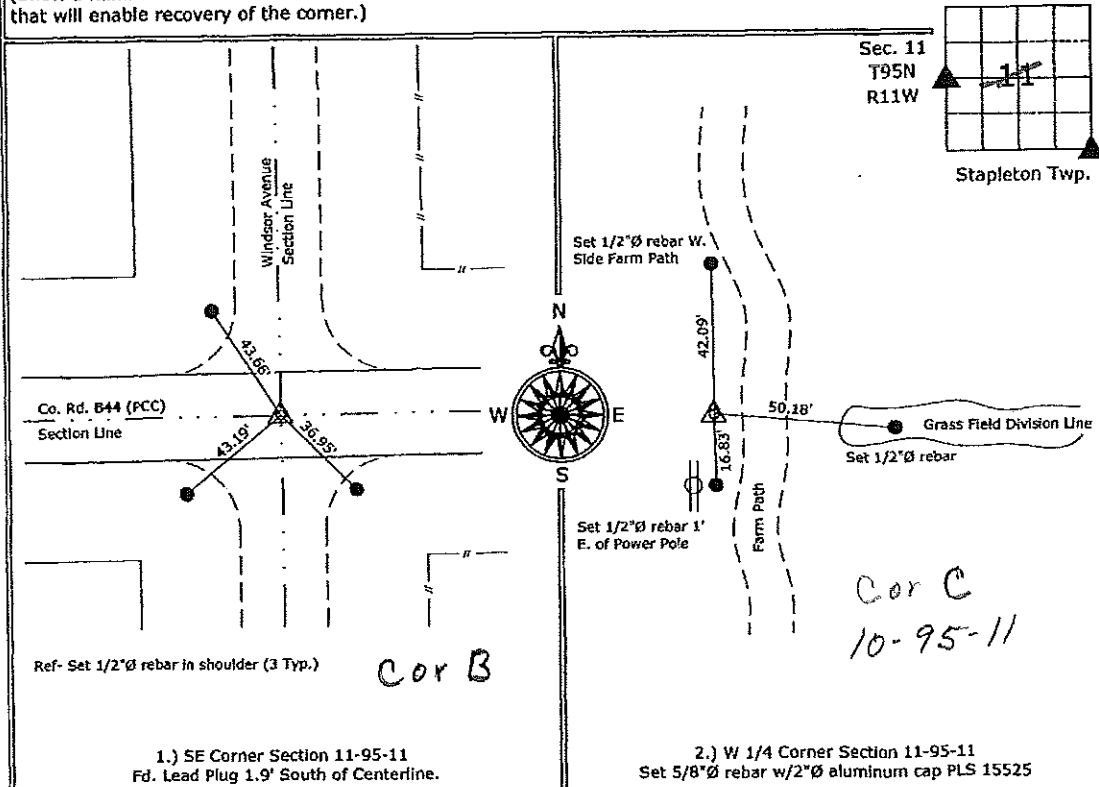
(Show reason for preparing this certificate, the evidence and detailed procedures used in establishing the corner positions and monumentation found or placed.)

Monument Description and Remarks:

- 1.) SE Corner Section 11-95-11: Fd. Lead Plug 1.9' South of Centerline. Previous ties are all missing. Set 3 new ties.
- 2.) W 1/4 Corner Section 11-95-11: Set 5/8"Ø rebar w/2"Ø aluminum cap PLS 15525 at the intersection of existing lines of occupation.

PLAN - VIEW

(Show a minimum of three reference ties to durable physical objects, relevant monuments and physical conditions that will enable recovery of the corner.)



1.) SE Corner Section 11-95-11
 Fd. Lead Plug 1.9' South of Centerline.

2.) W 1/4 Corner Section 11-95-11
 Set 5/8"Ø rebar w/2"Ø aluminum cap PLS 15525



I hereby certify that this land surveying document was prepared and the related survey work was performed by me or under my direct personal supervision and that I am a duly licensed Land Surveyor under the laws of the State of Iowa.

Paul R. Herold 1-11-08
 Paul R. Herold Date:
 License number 15525
 My license renewal date is December 31, 2008.
 Sheets covered by this seal: Individual sheet only

List Corners to be Indexed			
Corners	Section	Twp.	Range
SE	11	95	11
W 1/4	11	95	11

Project Number: 2007-128

FB: Chickasaw County 1, Pgs. 49-50

File: S:_Projects\2007\2007-128.dwg, 1/9/2008 5:16:40 PM