

Chickasaw Co. Recorder
 Cindy Messersmith
Fee Book 2009-0696
 04/09/2009 @0140PM
 SCC SEC COR CERT
 Book: Page: # Pages: 1
 Total Fees: \$7.00

cor. B
 3-95-11
 As referred to
 in Engr. Tie Book

Herold - Reicks Surveying, 25 1/2 East Main Street, Suite 204, New Hampton, IA 50659, Ph. 641-394-2725

UNITED STATES PUBLIC LAND SURVEY CORNER CERTIFICATE

Land Survey Monuments situated in Section **10**, Township **95** North, Range **11** West of the Fifth Principal Meridian, **Chickasaw** County, Iowa. Previously recorded in 1.) Bk. 169, Pg. 349, 2.) N/A in the County Recorder's office.

This certificate is being prepared in compliance with Iowa Code Chapter 355.11 because:

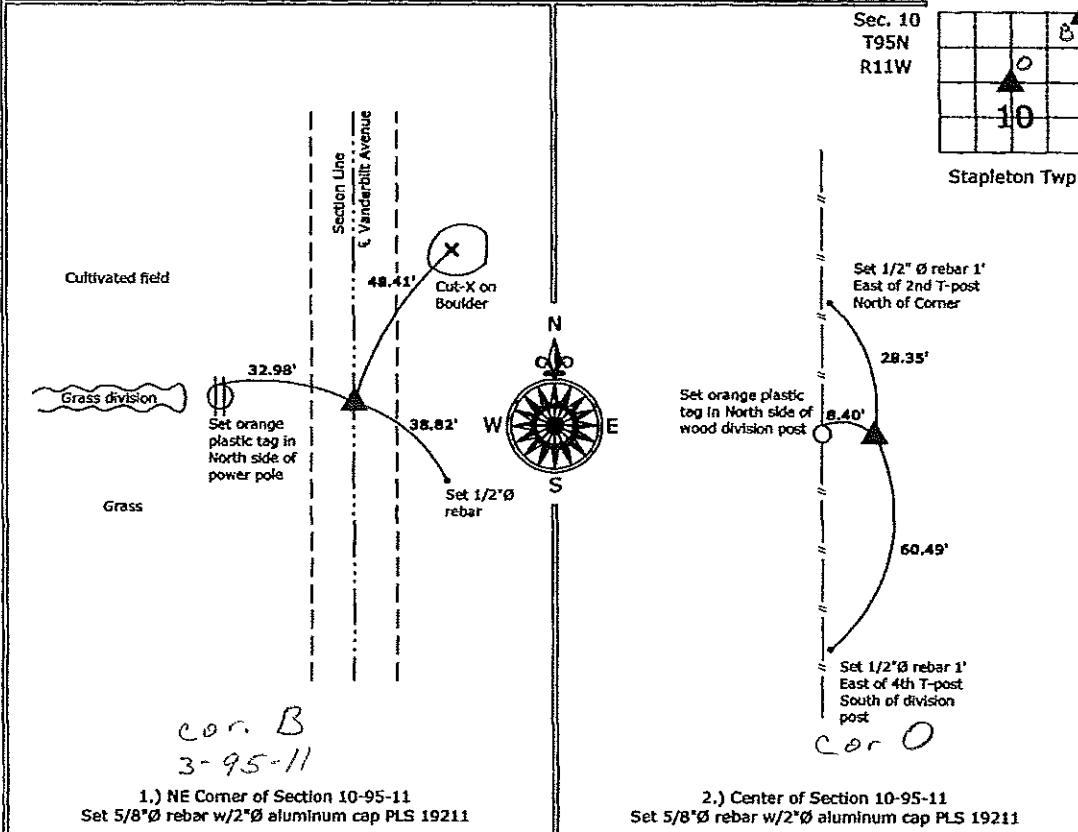
- 2. There is no certificate on file for this corner.
- There are no longer three valid ties of record.
- There are changes to reference ties of record.
- There is change of monumentation of record.
- 1. To clarify description of record monument (ties).

Monument Description and Remarks:

- 1.) **NE Corner:** Searched area as described from previous corner certificate. No monument was found. The position established by previous certificate appears to be in error. The distance from the W 1/4 corner of Section 2-95-11 was listed as 3362.75', almost 723' longer than a nominal half mile. Set 5/8"Ø rebar with 2" aluminum cap PLS 19211 at the intersection of the centerline of Vanderbilt Avenue and a line from the N 1/4 to and across 2 found monuments from a Plat of Survey made by Thomas V. Craft, recorded in Book 129, Page 288.
- 2.) **Center of Section:** Set 5/8"Ø rebar with 2" aluminum cap PLS 19211 (Buried 18" deep) at the intersection of 1/4 Section lines.

PLAN - VIEW

(Show a minimum of three reference ties to durable physical objects, relevant monuments and physical conditions that will enable recovery of the corner.)



1.) NE Corner of Section 10-95-11
 Set 5/8"Ø rebar w/2"Ø aluminum cap PLS 19211

2.) Center of Section 10-95-11
 Set 5/8"Ø rebar w/2"Ø aluminum cap PLS 19211

File: S:\Projects\2009\2009-041.tmg\2009-041.dwg, 4/3/2009 8:31:02 AM



I hereby certify that this land surveying document was prepared and the related survey work was performed by me or under my direct personal supervision and that I am a duly licensed Land Surveyor under the laws of the State of Iowa.

Kirk D. Reicks 4-9-09
 Kirk D. Reicks Date:

License number 19211
 My license renewal date is December 31, 2010.
 Sheets covered by this seal: Individual sheet only

List Corners to be Indexed			
Corners	Section	Twp.	Range
NE	10	95	11
CTR	10	95	11

Project Number: 2009-041
 FB: Chickasaw County 3, Pgs. 29-30

UNITED STATES PUBLIC LAND SURVEY CORNER CERTIFICATE

Land Survey Monuments situated in Section 2, Township 95 North, Range 11 West, of the Fifth Principal Meridian, Chickasaw County, Iowa.

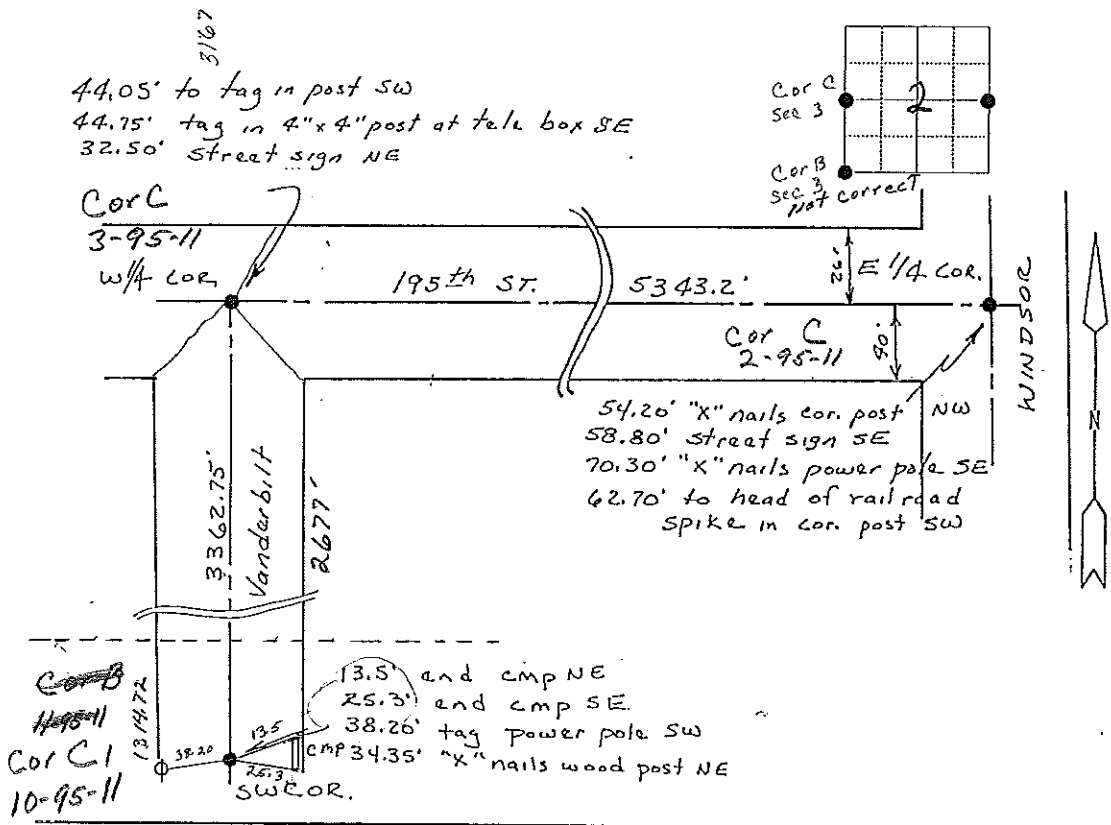
Previously recorded in N/A in County Recorder's Office.
(book, page, document number, etc.)

(Show reason for preparing this certificate, the evidence and detailed procedures used in establishing the corner positions and monumentation found or placed.)

Monument Description and Remarks: Found 1" twisted rebar @ E 1/4 cor. Corner 15 26' south of fence to North side of road and 40' north of fence on south side of road. Found spike in center of dead end road at SW corner section. Spike had red ribbon on it.

PLAN - VIEW

(Show a minimum of three reference ties to durable physical objects, relevant monuments and physical conditions that will enable recovery of the corner)



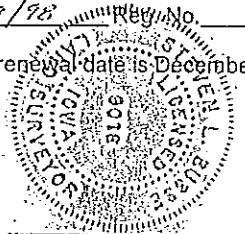
I hereby certify that the survey work was completed and this land surveying document was prepared by me or under my direct personal supervision and that I am a duly licensed land surveyor under the laws of the state of Iowa

Signature: Steve Busse
Name typed or printed: STEVE. BUSSE

Date: 11/9/98 Reg. No. 9018

My license renewal date is December 31, 1998

SEAL



List Corners to be Indexed			
Corners	Section	Twp	Range
w/4 cor.	2	95	11
E/4 cor.	2	95	11
SW cor.	2	95	11