

Section 11-95-11
As referred to in
Engr. Title Book

Chickasaw Co. Recorder
Cindy Messersmith
Fee Book 2007-1096
05/30/2007 @1002AM
SCC SEC COR CERT
Book: Page: # Pages: 1
Total Fees: \$7.00

Herold - Recks Surveying, 25 1/2 East Main Street, Suite 204, New Hampton, IA 50659, Ph. 641-394-2725

UNITED STATES PUBLIC LAND SURVEY CORNER CERTIFICATE

Land Survey Monuments situated in:

Section 11-12, Township 95 North, Range 11 West of the Fifth Principal Meridian,
Chickasaw County, Iowa. Previously recorded in N/A

In County Recorder's Office. (book, page, document number, etc.)

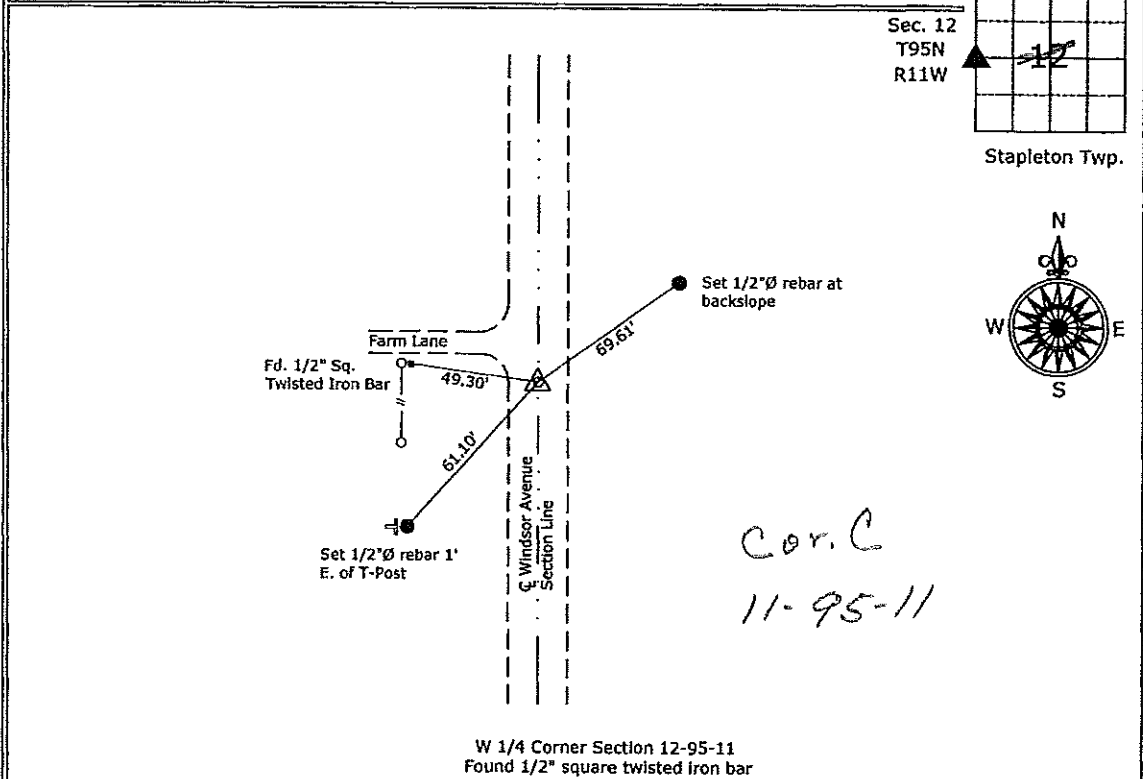
(Show reason for preparing this certificate, the evidence and detailed procedures used in establishing the corner positions and monumentation found or placed.)

Monument Description and Remarks:

W 1/4 Corner Section 12-95-11: Found 1/2" square twisted iron bar from information obtained from the County Engineer's Office in Field Book, Stapleton Twp., Section 11, Corner "C".

PLAN - VIEW

(Show a minimum of three reference ties to durable physical objects, relevant monuments and physical conditions that will enable recovery of the corner.)



Cor. C
11-95-11

W 1/4 Corner Section 12-95-11
Found 1/2" square twisted iron bar



I hereby certify that this land surveying document was prepared and the related survey work was performed by me or under my direct personal supervision and that I am a duly licensed Land Surveyor under the laws of the State of Iowa.

Paul R. Herold 5-30-07
Paul R. Herold Date:

License number 15525
My license renewal date is December 31, 2008.
Sheets covered by this seal: Individual sheet only

List Corners to be Indexed			
Corners	Section	Twp.	Range
W 1/4	12	95	11

Project Number: 2007-049
FB: Chickasaw County 1, Pgs. 25-26