

2003 MAY -2 JAN 8:47

CANDY MESSERSMITH  
 CHICKASAW CO. RECORDER

TeKIPPE ENGINEERING, P.C., 128 South Vine Street, West Union, Iowa 52175 Phone (563) 422-6131

UNITED STATES PUBLIC LAND SURVEY CORNER CERTIFICATE  
 OF

Land Survey Monuments situated in Section 12, Township 95 North, Range 11 West of the Fifth Principal Meridian, CHICKASAW County, Iowa.  
 Previously recorded in none in County Recorder's Office.  
 (book, page, document number, etc.)

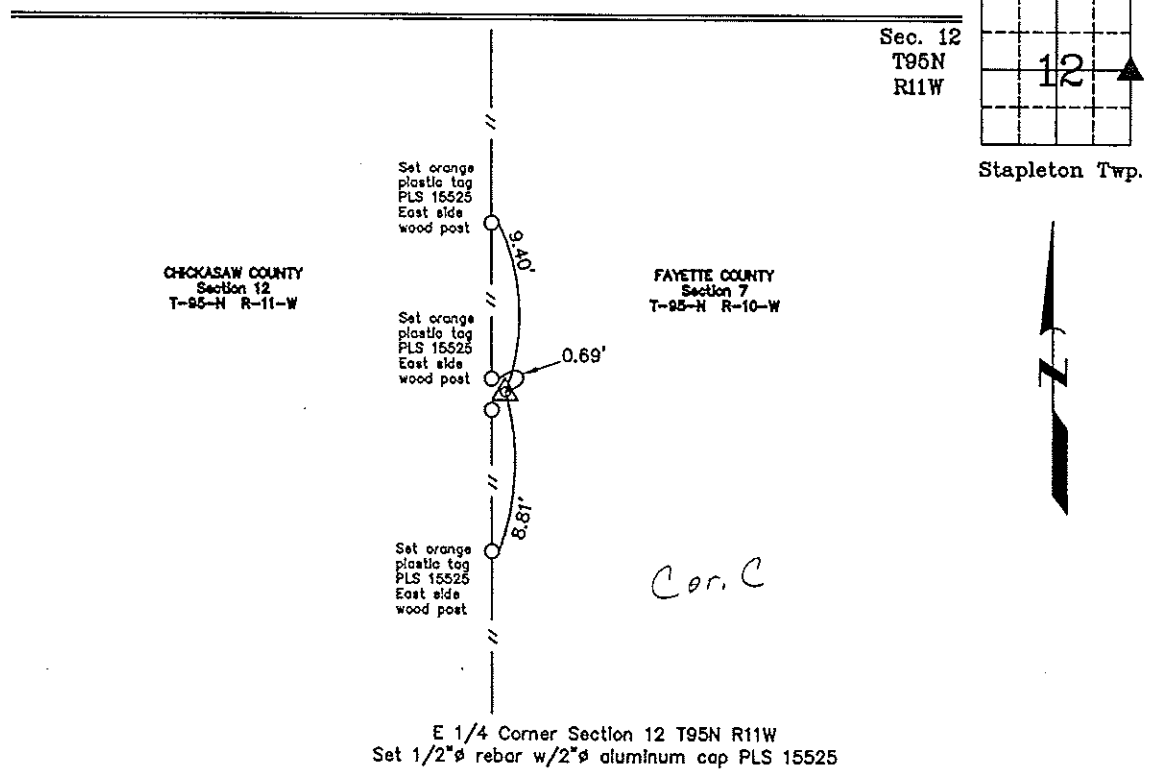
(Show reason for preparing this certificate, the evidence and detailed procedures used in establishing the corner positions and monumentation found or placed.)

Monument Description and Remarks: E 1/4 Corner Section 12 T95N R11W: Set 1/2"Ø rebar w/2"Ø aluminum cap PLS 15525 at division posts after comparing the position to adjacent Corners. There is no record of the perpetuation of a monument at this Corner location.

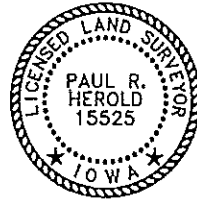
PLAN - VIEW

Project Number 03088.LS  
 FB. 47S PG. 16-17

(Show a minimum of three reference ties to durable physical objects, relevant monuments and physical conditions that will enable recovery of the corner.)



E 1/4 Corner Section 12 T95N R11W  
 Set 1/2"Ø rebar w/2"Ø aluminum cap PLS 15525



I hereby certify that this land surveying document was prepared and the related survey work was performed by me or under my direct personal supervision and that I am a duly Licensed Land Surveyor under the laws of the State of Iowa.  
Paul R. Harold 5-1-03  
 Paul R. Harold Date  
 License number 15525  
 My license renewal date is December 31, 2004.  
 Sheets covered by this seal: Individual

List Corners to be Indexed			
Corners	Section	Twp.	Range
E 1/4	12	95N	11W

Filed 5-7-03

County Engineer  
 [Signature]