

Prepared by & Return to: Herald - Reicks Surveying, 10 East Main Street, New Hampton, IA 50655, Ph. 641-354-2725

### UNITED STATES PUBLIC LAND SURVEY CORNER CERTIFICATE

Land Survey Monuments situated in Section 12, Township 95 North, Range 11 West of the Fifth Principal Meridian, Chickasaw County, Iowa. 1., 2.) Not previously recorded in the County Recorder's office.

This certificate is being prepared in compliance with Iowa Code Chapter 355.11 because:

- 1 & 2  There is no certificate on file for this corner.  
 There are no longer three valid ties of record.  
 There are changes to reference ties of record.  
 There is change of monumentation of record.  
 To clarify description of record monument (ties).

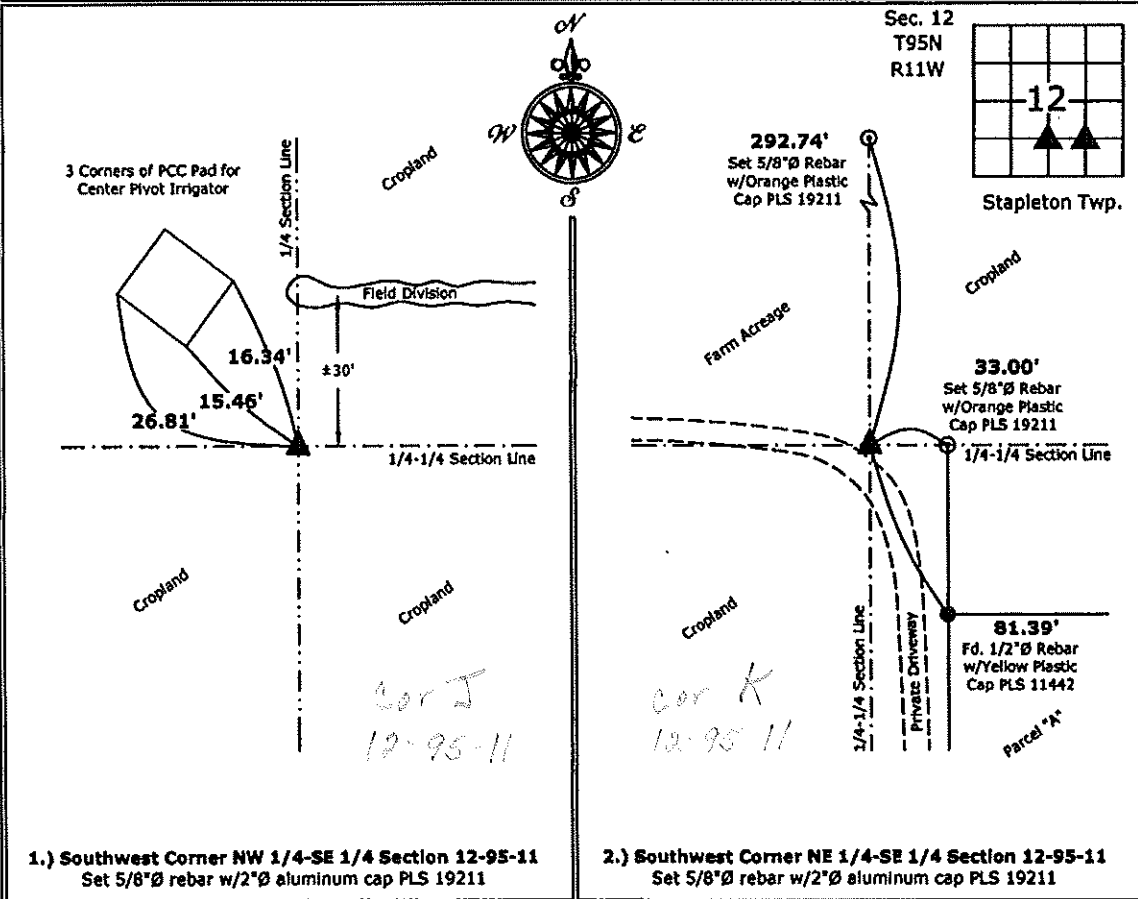
Monument Description and Remarks:

1.) Southwest Corner NW 1/4-SE 1/4: Set 5/8"Ø rebar with 2"Ø aluminum cap PLS 19211 equidistant and online between the South 1/4 Corner and Center of Section 12.

2.) Southwest Corner NE 1/4-SE 1/4: Set 5/8"Ø rebar w/2"Ø aluminum cap PLS 19211 at the intersection of a line from the Southwest Corner of the NW 1/4-SE 1/4 to the Northeast Corner of the SE 1/4-SE 1/4 and a line from the Northwest Corner of the NE 1/4-NE 1/4 to the Southwest Corner of the SE 1/4-SE 1/4. The West Line of the SE-1/4-SE1/4 is parallel to the West Line of Parcel "A" per Lindsay Erdman Survey and Plat.

#### PLAN - VIEW

(Show a minimum of three reference ties to durable physical objects, relevant monuments and physical conditions that will enable recovery of the corner.)



1.) Southwest Corner NW 1/4-SE 1/4 Section 12-95-11  
 Set 5/8"Ø rebar w/2"Ø aluminum cap PLS 19211

2.) Southwest Corner NE 1/4-SE 1/4 Section 12-95-11  
 Set 5/8"Ø rebar w/2"Ø aluminum cap PLS 19211



I hereby certify that this land surveying document was prepared and the related survey work was performed by me or under my direct personal supervision and that I am a duly licensed Land Surveyor under the laws of the State of Iowa.

*Kirk D. Reicks* 8-15-13  
 Kirk D. Reicks Date:

License number 19211  
 My license renewal date is December 31, 2014.  
 Sheets covered by this seal: Individual sheet only

List Corners to be Indexed			
Corners	Section	Twp.	Range
SW-NW-SE	12	95	11
SW-NE-SE	12	95	11

Project Number: 2013-118

FB: Chickasaw 5, Pgs. 56-57