

Chickasaw Co. Recorder
 Cindy Messersmith
Fee Book 2007-0734
 04/16/2007 @11:58AM
 SCC SEC COR CERT Page: # Pages: 1
 Total Fees: \$7.00

Herold - Reicks Surveying, 25 1/2 East Main Street, Suite 204, New Hampton, IA 50659, Ph. 641-394-2725

UNITED STATES PUBLIC LAND SURVEY CORNER CERTIFICATE

Land Survey Monuments situated in:

Section 1, Township 95 North, Range 11 West of the Fifth Principal Meridian,
Chickasaw County, Iowa. Previously recorded in None
(book, page, document number, etc.)
 in County Recorder's Office.

(Show reason for preparing this certificate, the evidence and detailed procedures used in establishing the corner positions and monumentation found or placed.)

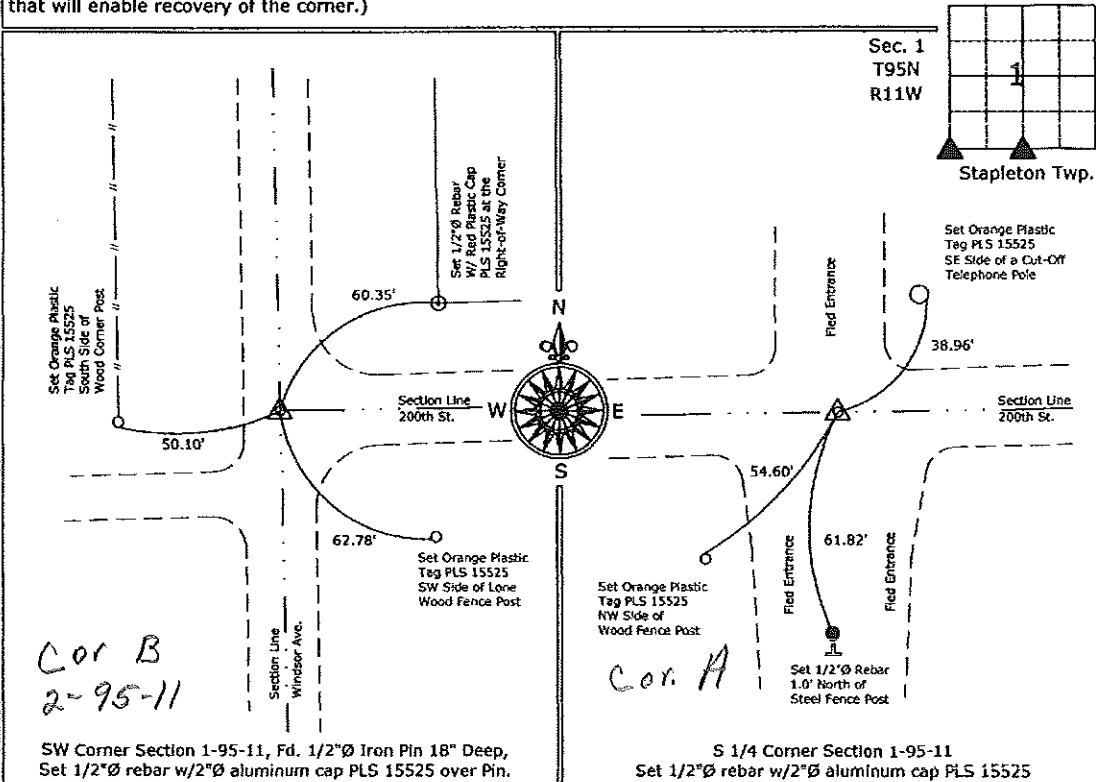
Monument Description and Remarks:

SW Corner Section 1-95-11, Fd. 1/2"Ø Iron pin 18" Deep, set 1/2"Ø rebar w/2"Ø aluminum cap PLS 15525 over Pin, Corner found from information obtained from the County Engineer's Office, in Field Book Stapleton Twp., Section 1, Corner "H".

S 1/4 Corner Section 1-95-11, set 1/2"Ø rebar w/2"Ø aluminum cap PLS 15525, corner position established at the intersection of the center of 200th Street and the field possession line to the south.

PLAN - VIEW

(Show a minimum of three reference ties to durable physical objects, relevant monuments and physical conditions that will enable recovery of the corner.)



SW Corner Section 1-95-11, Fd. 1/2"Ø Iron Pin 18" Deep, Set 1/2"Ø rebar w/2"Ø aluminum cap PLS 15525 over Pin.

S 1/4 Corner Section 1-95-11 Set 1/2"Ø rebar w/2"Ø aluminum cap PLS 15525



I hereby certify that this land surveying document was prepared and the related survey work was performed by me or under my direct personal supervision and that I am a duly licensed Land Surveyor under the laws of the State of Iowa.
Paul R. Herold 4-16-07
 Paul R. Herold Date:
 License number 15525
 My license renewal date is December 31, 2008.
 Sheets covered by this seal: Individual Sheet Only

List Corners to be Indexed			
Corners	Section	Twp.	Range
SW	1	95	11
S 1/4	1	95	11

Project Number: 2007-27
 FB: Chickasaw County 1, Pgs. 7-8

File: S:_Projects\2007\2007-027-027.dwg, 4/14/2007 1:34:58 PM