

CINDY MESSERSMITH
 COUNTY RECORDER

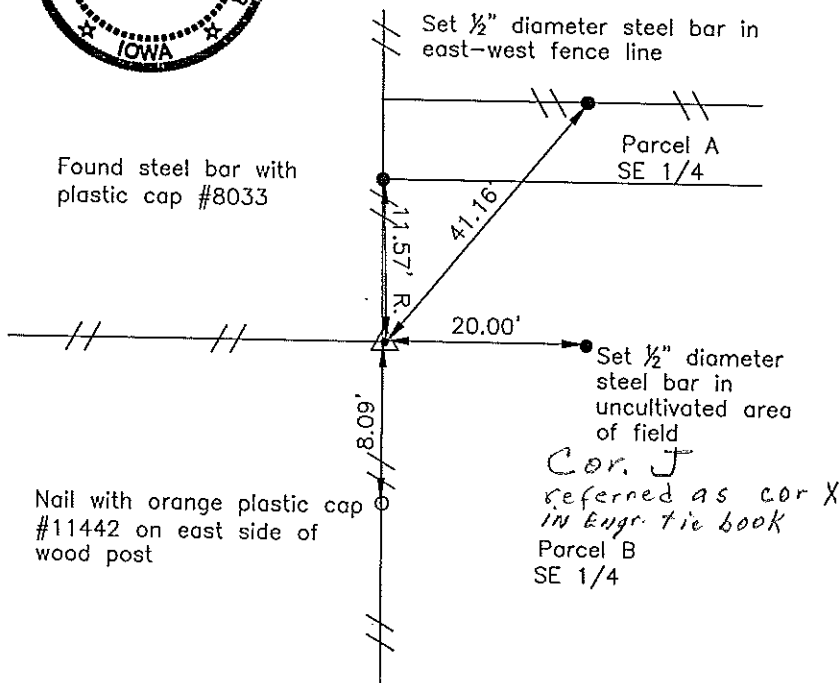
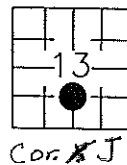
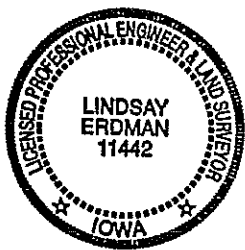
Prepared by: Erdman Engineering, P.C. 708 Commerce Drive, P.O. Box 246 Decorah, Iowa 52101, (563)382-4194

United States Public Land Survey Corner Certificate
 of

Land Survey Monuments situated in Section 13, Township 95, Range 11 West of the 5th Principal Meridian in Chickasaw County, Iowa. Previously recorded in does not apply in the county Recorder's Office.

Monument Description and Remarks: This certificate is prepared in accordance with Section 193C of the Code of Iowa. No previous certificate has been filed for this corner location. Based on the Plat of Survey recorded in Book 161 page 88 in the Chickasaw County Recorder's Office, we found a steel bar with plastic cap #6505 at an existing fence corner that matched the platted distance of 1328.42' from the S 1/4 Corner. We used the monument as the S 1/8 Corner of Section 13, Township 95 North, Range 11 West.

Plan-View



I hereby certify that the survey work was completed and this certificate was prepared by me or under my direct supervision and that I am a duly registered land surveyor under the laws of the State of Iowa.

Signature Lindsay Erdman
 Lindsay Erdman, P.E. and L.S.

Date: 7/12/01 Reg. No. 11442

My license renewal date is December 31, 2002

Corner(s) to be Indexed

Corner	Section	Township	Range
S 1/8	13	95	11