

DOCUMENT No. 02899 FILED FOR RECORD THE 9th DAY OF June 19 99 AT 8:52 O'CLOCK A M. BOOK 172 PAGE 48 STATE OF IOWA, CHICKASAW COUNTY: Cindy Messersmith Recorder By Mark M. Prange Deputy

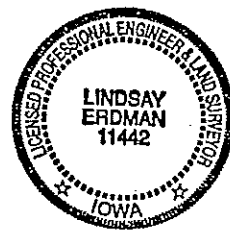
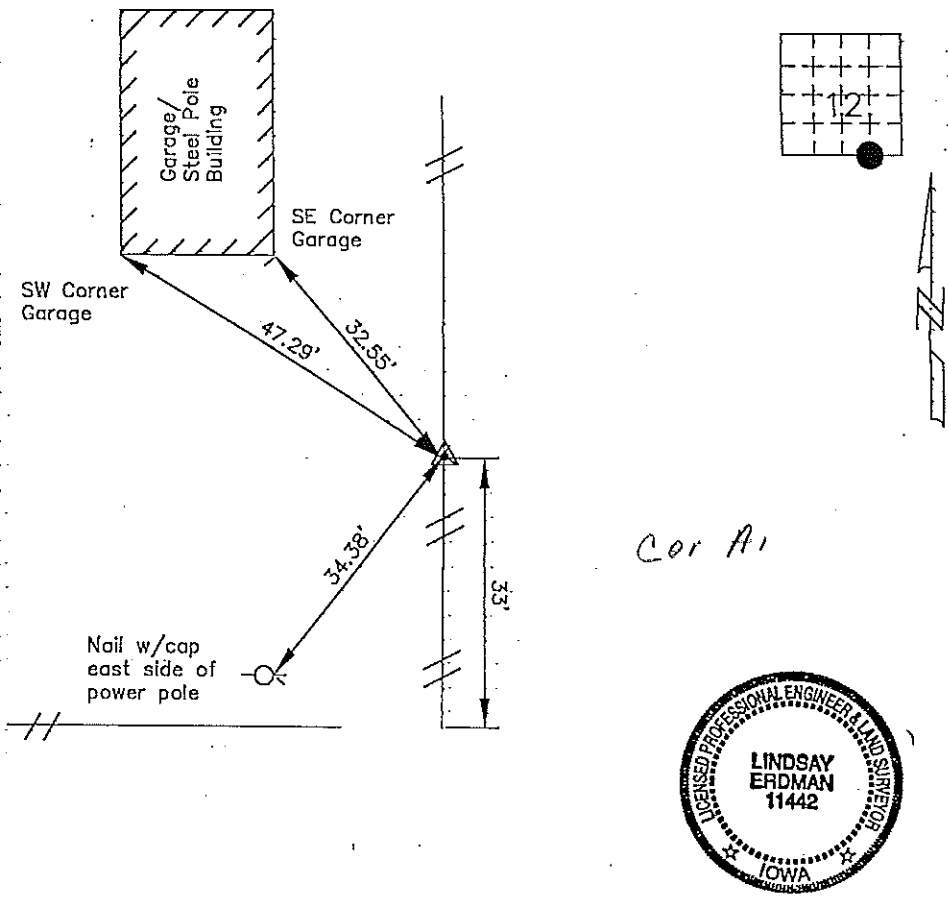
Prepared by: Erdman Engineering, P.C. 708 Commerce Drive, P.O. Box 246, Decorah, Iowa 52101
Phone (319)382-4194, Fax (319)382-3623

United States Public Land Survey Corner Certificate of

Land Survey Monuments situated in Section 12 Township 95 Range 11 of the Fifth Principle Meridian, Chickasaw County, Iowa. Previously recorded in does not apply in County Recorders Office.

Monument Description and Remarks: This certificate is prepared in accordance with Section 355.11 of the 1995 Code of Iowa. No previous certificate has been filed for this corner location. Based on Chickasaw County Engineer's Reference Ties we searched for the tie markers that had been previously set. We did not find any as they appear to have been removed during fence construction. Based on a plot recorded in Book 134 page 108 in the Chickasaw County Recorder's Office we found a 1" pipe in the north-south fence line that matches the description of the corner used previously as the SSE 1/8 Corner of Section 13, Township 95 North, Range 11 West. Based on this we accepted this pipe as the SSE 1/8 Corner of Section 12, Township 95 North, Range 11 West.

Plan-View



I hereby certify that the survey work was completed and this certificate was prepared by me or under my direct supervision and that I am a duly registered land surveyor under the laws of the State of Iowa.

Signature Lindsay Erdman
Lindsay Erdman, P.E. and L.S.

Date: 6/7/99 Reg. No. 11442

My license renewal date is December 31, 2000

List Corners to be Indexed			
Corners	Section	Twp.	Range
SSE 1/8	12	95	11

mic:\c:\logof\act\chick\89043\89043.txd