

Herold - Recks Surveying, 25 1/2 East Main Street, Suite 204, New Hampton, IA 50659, Ph. 641-994-2725

UNITED STATES PUBLIC LAND SURVEY CORNER CERTIFICATE

Land Survey Monuments situated in Section 14, Township 95 North, Range 11 West of the Fifth Principal Meridian, Chickasaw County, Iowa. Previously recorded in 1.) none 2.) Bk. 161, Pg. 89 in the County recorder's office.

This certificate is being prepared in compliance with Iowa Code Chapter 355.11 because:

- 1. There is no certificate on file for this corner.
- 2. There are no longer three valid ties of record.
- There are changes to reference ties of record.
- There is change of monumentation of record.
- To clarify description of record monument (ties).

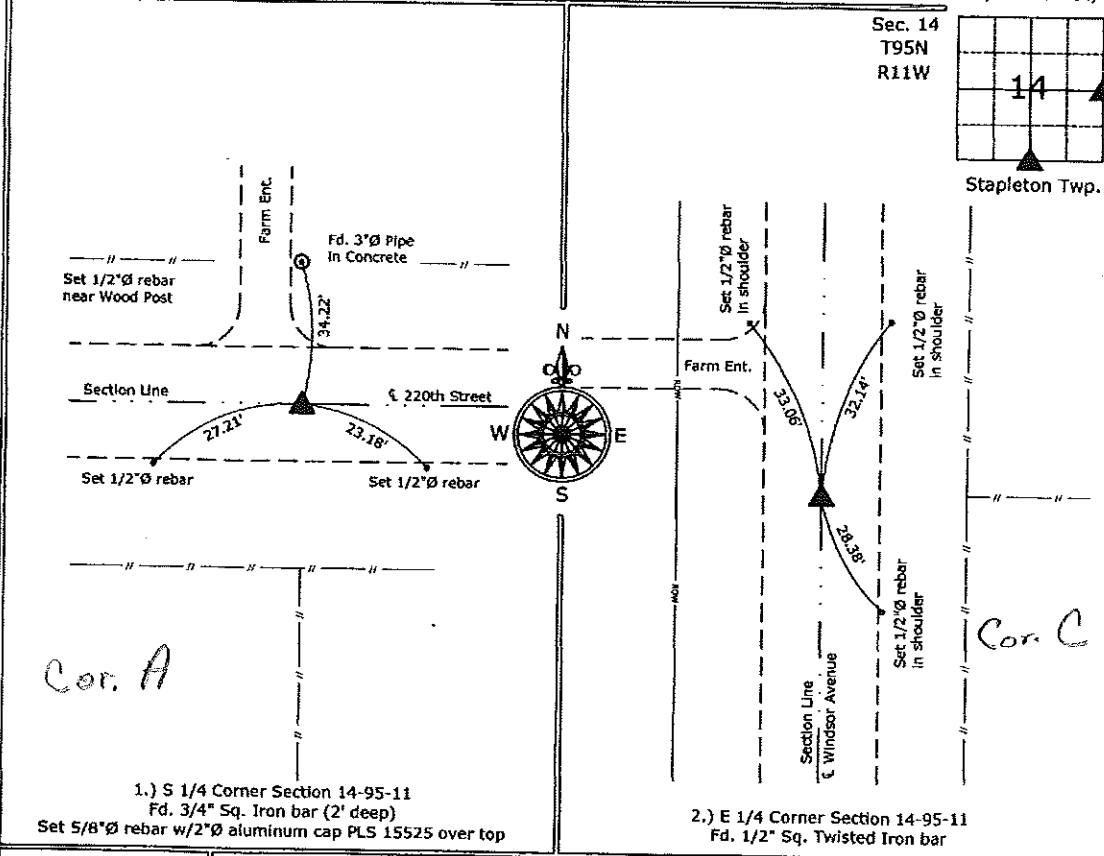
Monument Description and Remarks:

S 1/4 Corner - Fd. 3/4" Sq. Iron bar (2' deep) at the Centerline of 220th Street from information obtained from the Chickasaw County Engineer's office in Field Book "Stapleton Twp.", Section 14, Corner A. Set 5/8"Ø rebar w/2"Ø aluminum cap PLS 15525 over top.

E 1/4 Corner - Fd. 1/2" Sq. Twisted Iron bar from previous corner certificate. Previous ties were missing. Set three new ties to update the corner.

PLAN - VIEW

(Show a minimum of three reference ties to durable physical objects, relevant monuments and physical conditions that will enable recovery of the corner.)



Cor. A

Cor. C

1.) S 1/4 Corner Section 14-95-11
 Fd. 3/4" Sq. Iron bar (2' deep)
 Set 5/8"Ø rebar w/2"Ø aluminum cap PLS 15525 over top

2.) E 1/4 Corner Section 14-95-11
 Fd. 1/2" Sq. Twisted Iron bar



I hereby certify that this land surveying document was prepared and the related survey work was performed by me or under my direct personal supervision and that I am a duly licensed Land Surveyor under the laws of the State of Iowa.

Paul R. Herold 11-26-08
 Paul R. Herold Date:
 License number 15525
 My license renewal date is December 31, 2008.
 Sheets covered by this seal: Individual sheet only

List Corners to be Indexed			
Corners	Section	Twp.	Range
S 1/4	14	95	11
E 1/4	14	95	11

Project Number: 2008-078
 FB: Chickasaw County 1, Pgs. 78-79

File: S:_Projects\2008-135.dwg, 11/26/2008 7:58:14 AM

Section 14-95-11
 As referred to in
 Engr. Tie Book

PAUL H. HELLAND, 2322 W. 1ST ST., SUITE B, CEDAR FALLS, IOWA 50613, (319)-266-0161

UNITED STATES PUBLIC LAND SURVEY CORNER CERTIFICATE
 OF

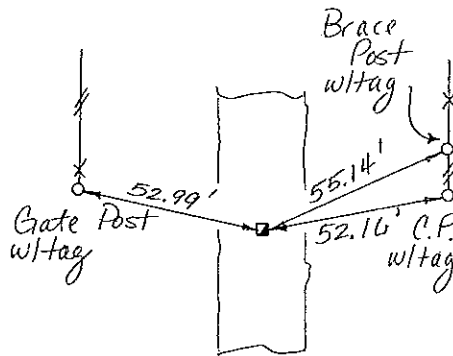
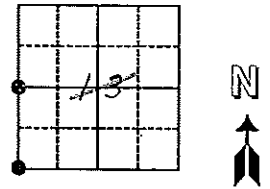
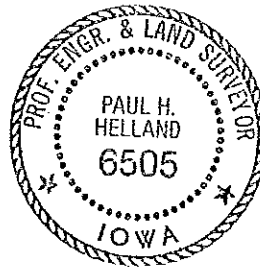
Land Survey Monuments situated in Section 13 14, Township 95, Range 11, of the Fifth Principal Meridian, Chickasaw County, Iowa.
 Previously recorded in Book _____, Page _____.

(Show reason for preparing this certificate, the evidence and detailed procedures used in establishing the corner positions and monumentation found or placed.)

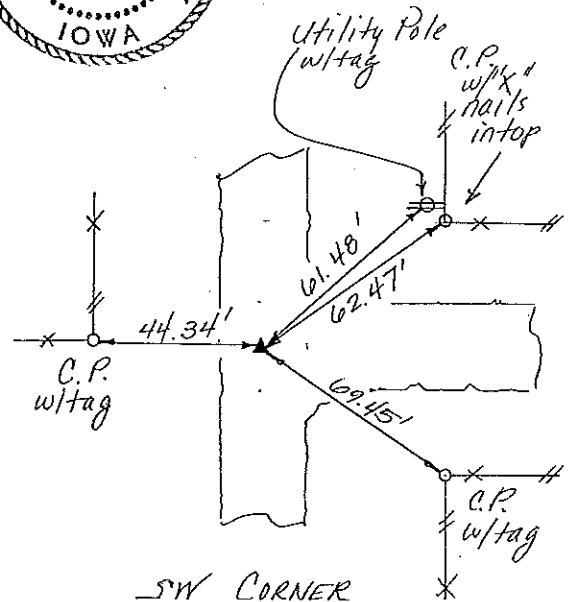
Monument Description and Remarks: Survey of 3 1/2 SW 1/4 Sec. 13.
W 1/4 Cor. - Found 1/2" Twist pin 0.8' Deep
SW Cor - Found nail w/flagging 0.3' Deep

PLAN - VIEW

(Show a minimum of three reference ties to durable physical objects, relevant monuments and physical conditions that will enable recovery of the corner.)



W 1/4 CORNER
Cor C 1495-11



SW CORNER
Cor B 14 95-11

96-231

I HEREBY CERTIFY THAT THIS PLAT, MAP, SURVEY OR REPORT WAS MADE BY ME OR UNDER MY DIRECT PERSONAL SUPERVISION AND THAT I AM A DULY REGISTERED LAND SURVEYOR UNDER THE LAWS OF THE STATE OF IOWA
 PAUL H. HELLAND, P.E. & R.L.S. IOWA REGISTRATION NO. 6505
 MY REGISTRATION EXPIRES DECEMBER 31, 1997

HES
 HELLAND ENGINEERING & SURVEYING, LTD.
 THUNDER RIDGE BANK BUILDING
 2322 WEST 1ST ST., SUITE B
 CEDAR FALLS, IOWA 50613
 319-266-0161

List Corners to be Indexed

Corners	Section	Twp	Range
W 1/4	13	95	11
SW	13	95	11

Placed in Tie Book

Engr. Copy.

161-89

6-6-96