

UNITED STATES PUBLIC LAND SURVEY CORNER CERTIFICATE

OF

Land Survey Monuments situated in Section 17 8, Township 25 N, Range 11 W, of the Fifth Principal Meridian, Chickasaw County, Iowa. Previously recorded in does not apply in County Recorders Office. (book, page, document number, etc.)

(Show reason for preparing this certificate, the evidence and detailed procedures used in establishing the corner positions and monumentation found or placed.)

Monument Description and Remarks: see below

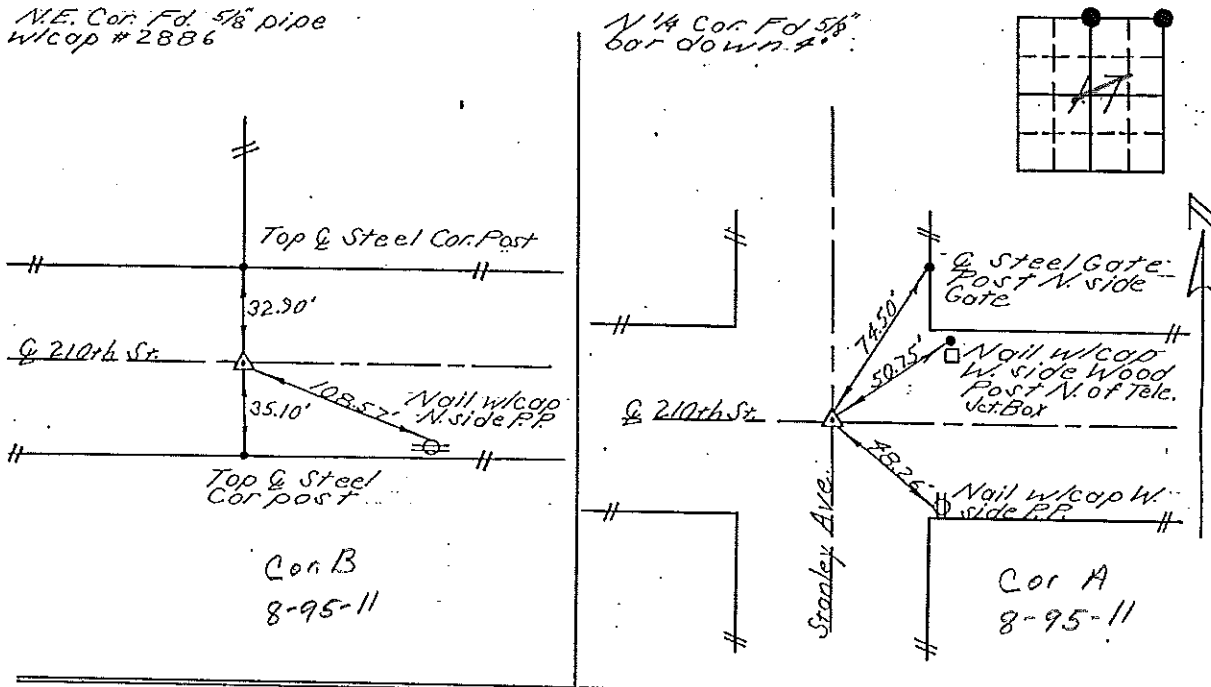
Section 8-95-11
As referred to in
Engr. TIC Book

PLAN - VIEW

(Show a minimum of three reference ties to durable physical objects, relevant monuments and physical conditions that will enable recovery of the corner.)

NE. Cor. Fd. 5/8" pipe
w/cap # 2886

N 1/4 Cor. Fd. 5/8"
bor down 4"



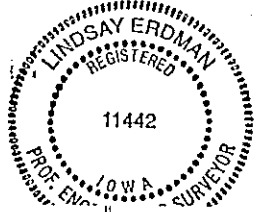
I hereby certify that the survey work was completed and this certificate was prepared by me or under by direct personal supervision and that I am a duly registered land surveyor under the laws of the State of Iowa.

Signature: Lindsay Erdman
Lindsay Erdman, P.E. & L.S.

Date: 12-28-94 Reg. No. 11442

My license will be renewed January 1, 1997.

SEAL



Corners	List Corners to be Indexed	Section	Twp.	Range.
NE	17	95	11	
N 1/4	17	95	11	

DOCUMENT No. 01170 FILED FOR RECORD THE 6th DAY OF January 1995 AT 9:39 STATE OF IOWA, CHICKASAW COUNTY
RECORDING FEE \$ 6.00 O'CLOCK 10:00 A.M. BOOK 156 PAGE 466 By Leitha M. Ross Recorder
TRANSFER FEE \$ — Deputy

#94169 Kurtenbach