

Chickasaw Co. Recorder
 Cindy Messersmith
Fee Book 2015-0709
 06/08/2015 @0308PM
 SEC. SEC COR CERT
 Book; Page: # Pages: 1
 Total Fees: \$7.00

Prepared by & Return to: Herold - Reicks Surveying, 10 East Main Street, New Hampton, IA 50659, Ph. 641-394-2725

UNITED STATES PUBLIC LAND SURVEY CORNER CERTIFICATE

Land Survey Monuments situated in Section 9, Township 95 North, Range 11 West of the Fifth Principal Meridian, Chickasaw County, Iowa. Previously recorded in Bk. 156, Pg. 466 in the County Recorder's office.

This certificate is being prepared in compliance with Iowa Code Chapter 355.11 because:

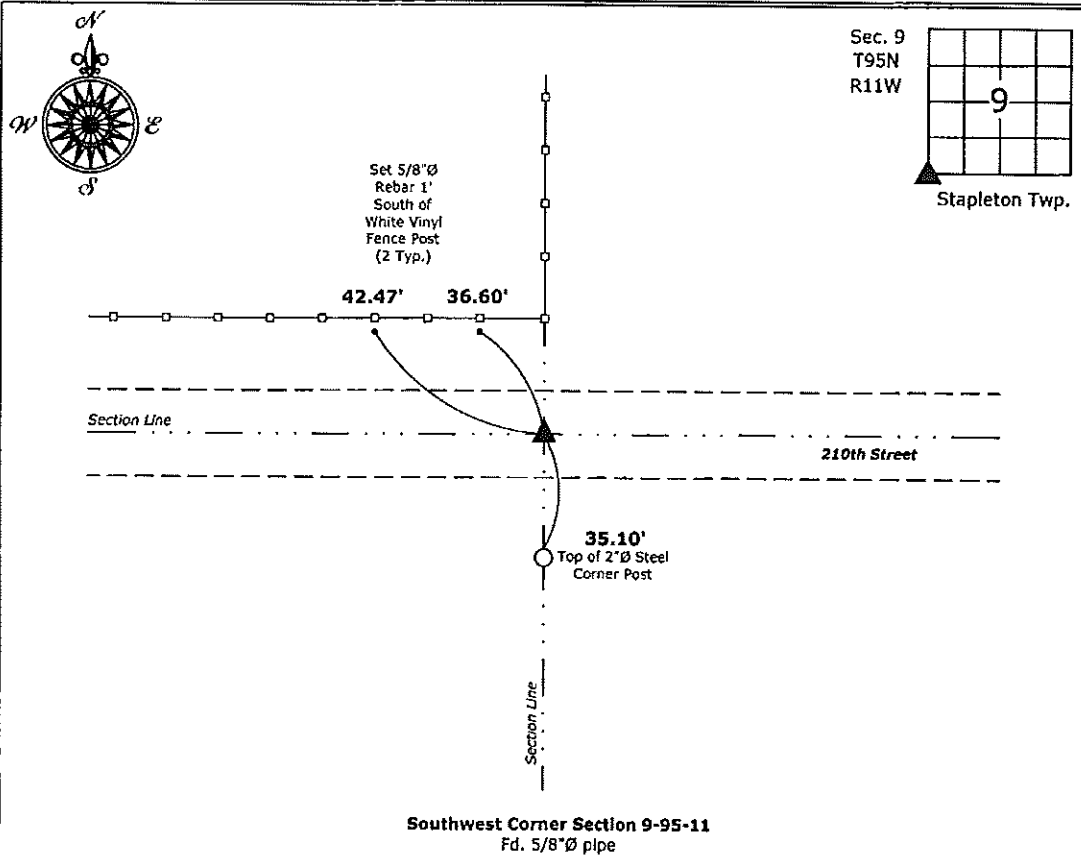
- There is no certificate on file for this corner.
- There are no longer three valid ties of record.
- There are changes to reference ties of record.
- There is change of monumentation of record.
- To clarify description of record monument (ties).

Monument Description and Remarks:

Southwest Corner: Fd. 5/8"Ø pipe with information obtained from the previous Section Corner Certificate. The aluminum cap and all reference ties were missing, set new ties to update corner.

PLAN - VIEW

(Show a minimum of three reference ties to durable physical objects, relevant monuments and physical conditions that will enable recovery of the corner.)



Southwest Corner Section 9-95-11
 Fd. 5/8"Ø pipe



I hereby certify that this land surveying document was prepared and the related survey work was performed by me or under my direct personal supervision and that I am a duly licensed Land Surveyor under the laws of the State of Iowa.

Kirk D. Reicks 6-8-15
 Kirk D. Reicks Date:

License number 19211
 My license renewal date is December 31, 2016.
 Sheets covered by this seal: Individual sheet only

List Corners to be Indexed

Corners	Section	Twp.	Range
SW	9	95	11

Project Number: 2015-079

FB: Chickasaw County 7, Pgs. 33, 35

File: S:_Cadd Projects\County Control Systems\CHICKASAW\CHICK-30 (Lawler)\CHICK-30.dwg, 6/8/2015 12:23:18 PM

UNITED STATES PUBLIC LAND SURVEY CORNER CERTIFICATE

OF

Land Survey Monuments situated in Section 17 8, Township 25 N, Range 11 W, of the Fifth Principal Meridian, Chickasaw County, Iowa. Previously recorded in does not apply in County Recorders Office. (book, page, document number, etc.)

(Show reason for preparing this certificate, the evidence and detailed procedures used in establishing the corner positions and monumentation found or placed.)

Monument Description and Remarks: see below

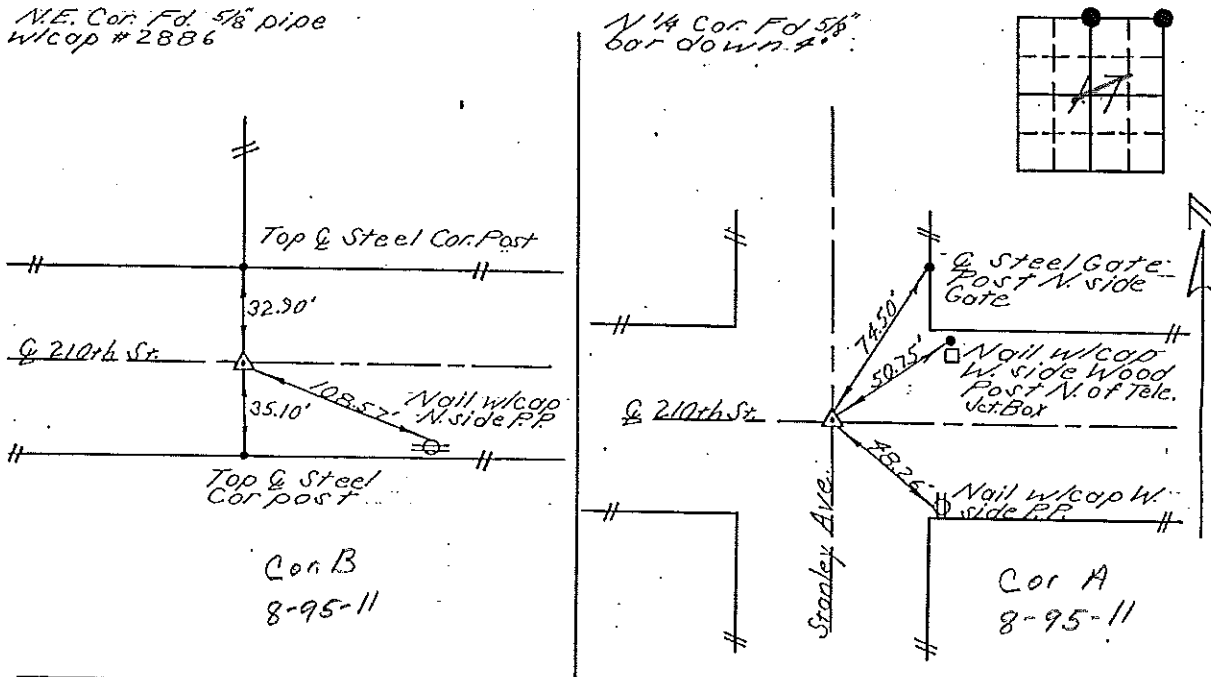
Section 8-95-11
As referred to in
Engr. TIC Book

PLAN - VIEW

(Show a minimum of three reference ties to durable physical objects, relevant monuments and physical conditions that will enable recovery of the corner.)

NE. Cor. Fd. 5/8" pipe
w/cap # 2886

N 1/4 Cor. Fd. 5/8"
bor down 4"



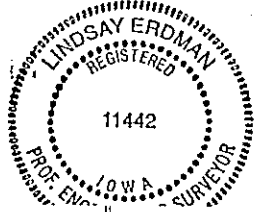
I hereby certify that the survey work was completed and this certificate was prepared by me or under by direct personal supervision and that I am a duly registered land surveyor under the laws of the State of Iowa.

Signature: Lindsay Erdman
Lindsay Erdman, P.E. & L.S.

Date: 12-28-94 Reg. No. 11442

My license will be renewed January 1, 1997.

SEAL



Corners	List Corners to be Indexed Section	Twp.	Range.
NE	17	95	11
N 1/4	17	95	11

DOCUMENT No. 01170 FILED FOR RECORD THE 6th DAY OF January 1995 AT 9:39 STATE OF IOWA, CHICKASAW COUNTY. Recorder Leitha M. Ross Deputy By

#94169 Kurtenbach