

Prepared by & Return to Herald - Reicks Surveying, 10 East Main Street, New Hampton, IA 50659, Ph. 641-394-2725

UNITED STATES PUBLIC LAND SURVEY CORNER CERTIFICATE

Land Survey Monuments situated in Section **18**, Township **95 North**, Range **11 West** of the Fifth Principal Meridian, **Chickasaw County, Iowa**. 1.) Previously recorded in Document #2002-2124 in the County Recorder's office. 2.) Previously recorded in Bk. 160, Pg. 430 in the County Recorder's office.

This certificate is being prepared in compliance with Iowa Code Chapter 355.11 because:

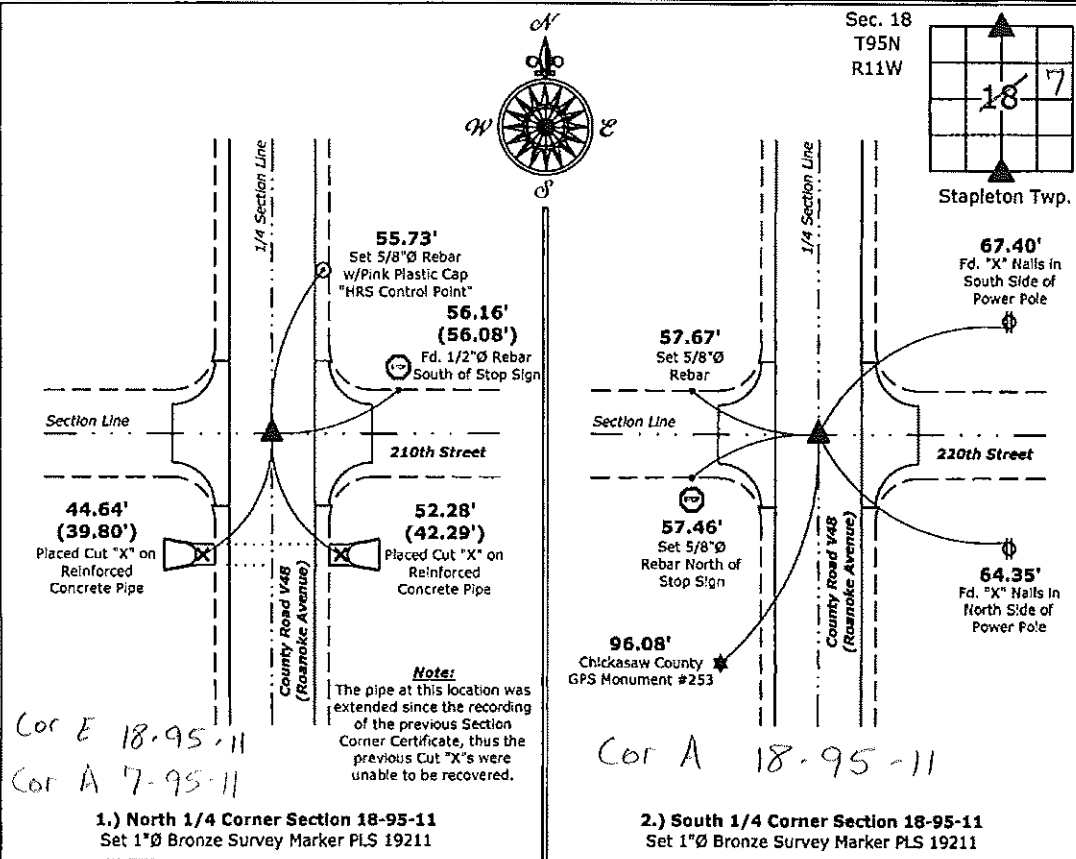
- There is no certificate on file for this corner.
- There are no longer three valid ties of record.
- There are changes to reference ties of record.
- 1 & 2 There is change of monumentation of record.
- To clarify description of record monument (ties).

Monument Description and Remarks:

- 1.) North 1/4 Corner:** Set 1"Ø Bronze Survey Marker PLS 19211 at previous location (Found Lead Plug w/Cut-X) with coordinates obtained prior to highway reconstruction, Project #STP-S-CO19(94)--5E-19.
- 2.) South 1/4 Corner:** Set 1"Ø Bronze Survey Marker PLS 19211 at previous location (Found Cut-X) with coordinates obtained prior to highway reconstruction, Project #STP-S-CO19(94)--5E-19.

PLAN - VIEW

(Show a minimum of three reference ties to durable physical objects, relevant monuments and physical conditions that will enable recovery of the corner.)



I hereby certify that this land surveying document was prepared and the related survey work was performed by me or under my direct personal supervision and that I am a duly licensed Land Surveyor under the laws of the State of Iowa.

Kirk D. Reicks 7-29-15
 Kirk D. Reicks Date:
 License number 19211
 My license renewal date is December 31, 2016.
 Sheets covered by this seal: Individual sheet only

List Corners to be Indexed			
Corners	Section	Twp.	Range
N 1/4	18	95	11
S 1/4	18	95	11

Project Number: 2015-001
 FB: Chickasaw County 7, Pg. 24

File: S:_C3D Projects\2015\2015-001 (V48)\2015-001.dwg, 7/29/2015 10:23:30 AM

2002 AUG 30 AM 10 32

GINDY MESSERSMITH
 COUNTY RECORDER

TeKIPPE ENGINEERING, P.C., 128 South Vine Street, West Union, Iowa 52175 Phone (563) 422-5131

UNITED STATES PUBLIC LAND SURVEY CORNER CERTIFICATE

OF

Land Survey Monuments situated in Section 7, Township 95 North, Range 11 West of the Fifth Principal Meridian, CHICKASAW County, Iowa. Previously recorded in none in County Recorder's Office.
(book, page, document number, etc.)

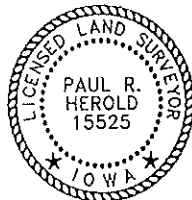
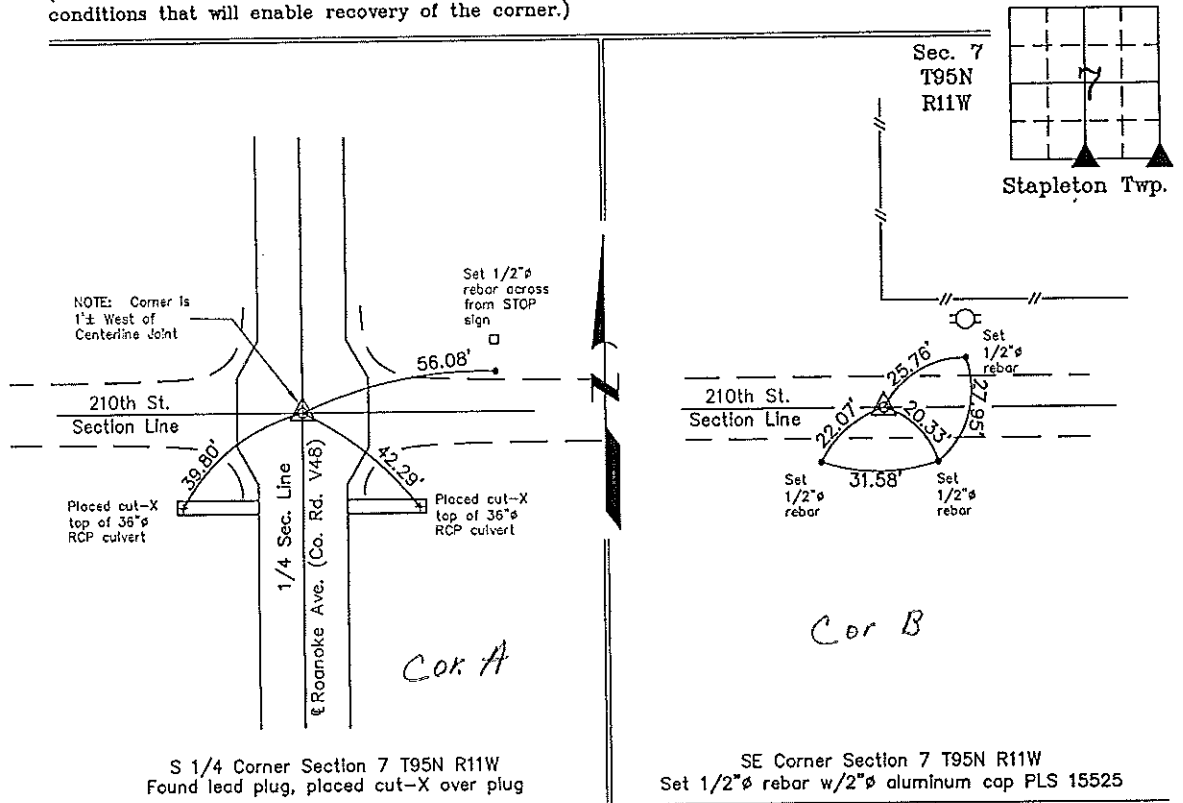
(Show reason for preparing this certificate, the evidence and detailed procedures used in establishing the corner positions and monumentation found or placed.)

Monument Description and Remarks: S 1/4 Corner Section 7 T95N R11W: Found lead plug with information obtained from a Survey and Plat made by L. P. Erdman recorded in the Chickasaw County Recorder's Office March 1, 1976 in Book 111, Page 79. Placed cut-X over lead plug.
SE Corner Section 7 T95N R11W: Set 1/2"Ø rebar w/2"Ø aluminum cap PLS 15525 on the centerline of County Road 210th St. on the extension of the Section Line fence from the North.

PLAN - VIEW

Project Number 02193.LS
 FB. 46J PG. 27-31

(Show a minimum of three reference ties to durable physical objects, relevant monuments and physical conditions that will enable recovery of the corner.)



I hereby certify that this land surveying document was prepared and the related survey work was performed by me or under my direct personal supervision and that I am a duly licensed Land Surveyor under the laws of the State of Iowa.

Paul R. Herold 8-29-02
 Paul R. Herold Date
 License number 15525
 My license renewal date is December 31, 2002.
 Sheets covered by this seal: Individual

List Corners to be Indexed			
Corners	Section	Twp.	Range
S 1/4	7	95N	11W
SE	7	95N	11W

File 9-5-02

X:\Section Corners\Sec. 07\7-95-11wy.dwg

County Engineer's Copy