

Prepared by & Return to: Herald - Reicks Surveying, 10 East Main Street, New Hampton, IA 50659, Ph. 641-394-2725

UNITED STATES PUBLIC LAND SURVEY CORNER CERTIFICATE

Land Survey Monuments situated in Section 19, Township 95 North, Range 11 West of the Fifth Principal Meridian, Chickasaw County, Iowa. 1.) Previously recorded in Document #2011-0660 in the County Recorder's office. 2.) Not previously recorded in the County Recorder's office.

This certificate is being prepared in compliance with Iowa Code Chapter 355.11 because:

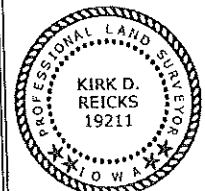
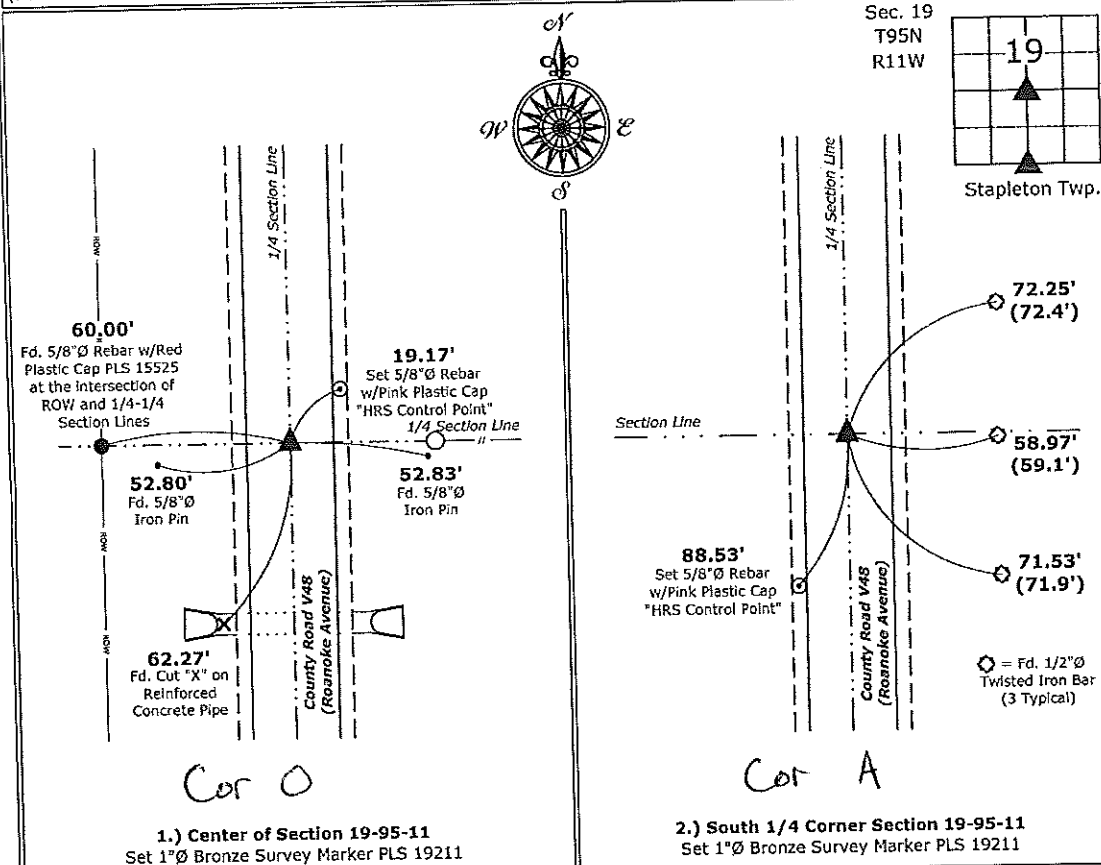
- There is no certificate on file for this corner.
- There are no longer three valid ties of record.
- There are changes to reference ties of record.
- There is change of monumentation of record.
- To clarify description of record monument (ties).

Monument Description and Remarks:

- 1.) **Center:** Set 1"Ø Bronze Survey Marker PLS 19211 at previous location (Found Survey Mark Nail w/Stainless Steel Washer PLS 15525) with coordinates obtained prior to highway reconstruction, Project #STP-S-CO19(94)--5E-19.
- 2.) **South 1/4 Corner:** Set 1"Ø Bronze Survey Marker PLS 19211 at previous location (Found Lead Plug with Information obtained from the County Engineer's office) with coordinates obtained prior to highway reconstruction, Project #STP-S-CO19(94)--5E-19.

PLAN - VIEW

(Show a minimum of three reference ties to durable physical objects, relevant monuments and physical conditions that will enable recovery of the corner.)



I hereby certify that this land surveying document was prepared by me or under my direct personal supervision and that I am a duly licensed Land Surveyor under the laws of the State of Iowa.

Kirk D. Reicks 7-29-15
 Kirk D. Reicks Date:
 License number 19211
 My license renewal date is December 31, 2016.
 Sheets covered by this seal: Individual sheet only

List Corners to be Indexed			
Corners	Section	Twp.	Range
CTR	19	95	11
S 1/4	19	95	11

Project Number: 2015-001
 FB: Chickasaw County 7, Pg. 24

Prepared by & Return to Herold - Reicks Surveying, 10 East Main Street, New Hampton, IA 50658, Ph. 641-394-2725

UNITED STATES PUBLIC LAND SURVEY CORNER CERTIFICATE

Land Survey Monuments situated in Section 19, Township 95 North, Range 11 West of the Fifth Principal Meridian, Chickasaw County, Iowa. 1.) & 2.) Not previously recorded the County Recorder's office.

This certificate is being prepared in compliance with Iowa Code Chapter 355.11 because:

- 1.) & 2.) There is no certificate on file for this corner.
 There are no longer three valid ties of record.
 There are changes to reference ties of record.
 There is change of monumentation of record.
 To clarify description of record monument (ties).

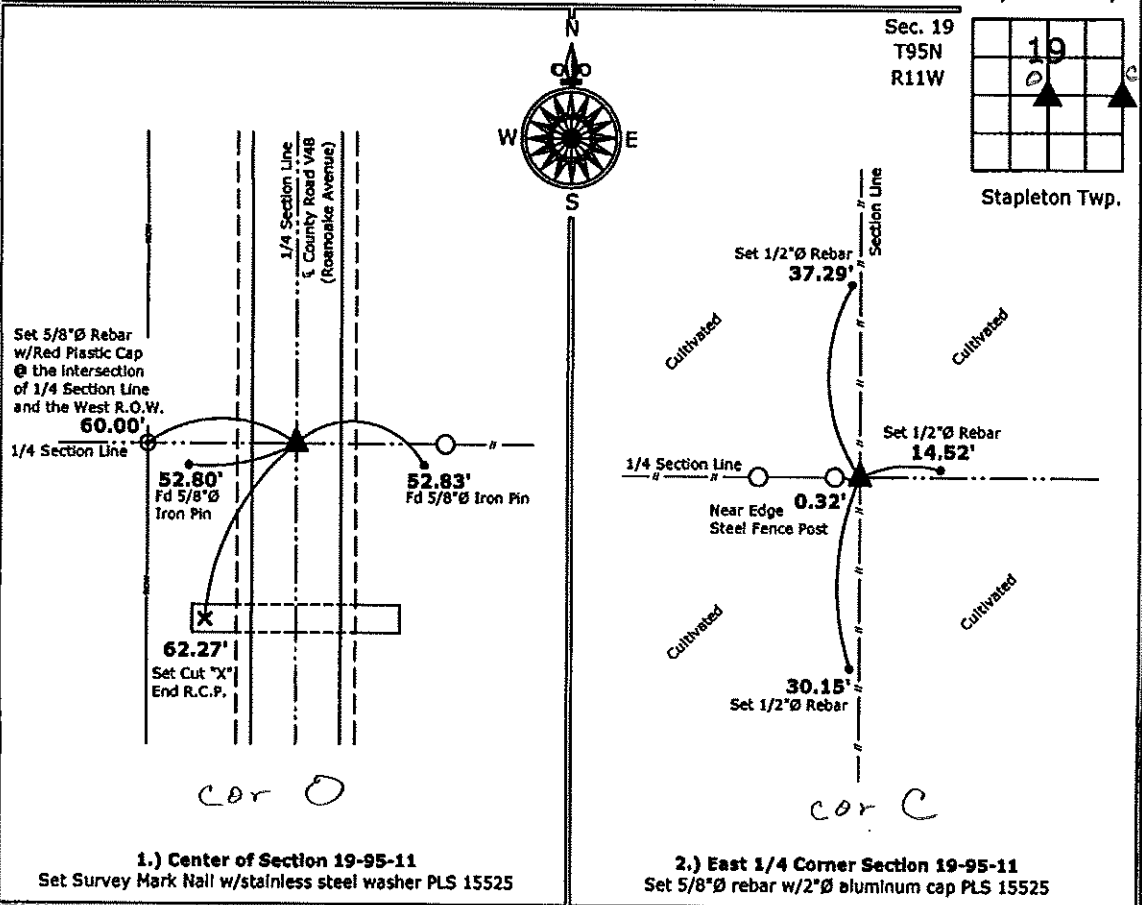
Monument Description and Remarks:

1.) **Center of Section:** Set Survey Mark Nail with stainless steel washer PLS 15525 at the intersection of Quarter Section Lines.

2.) **East 1/4 Corner:** Set 5/8"Ø rebar with 2"Ø aluminum cap PLS 15525 at the intersection of existing possession line fences, there is no record of the perpetuation of a monument at this corner, accepted the fence corner as best evidence.

PLAN - VIEW

(Show a minimum of three reference ties to durable physical objects, relevant monuments and physical conditions that will enable recovery of the corner.)



I hereby certify that this land surveying document was prepared and the related survey work was performed by me or under my direct personal supervision and that I am a duly licensed Land Surveyor under the laws of the State of Iowa.

Paul R. Herold A-25-11
 Paul R. Herold Date:

License number 15525
 My license renewal date is December 31, 2012.
 Sheets covered by this seal: Individual sheet only

List Corners to be Indexed			
Corners	Section	Twp.	Range
CTR	19	95	11
E 1/4	19	95	11

Project Number: 2011-033
 FB: Chickasaw County 3, Pgs. 66-68