

Prepared by & Return to Herald - Reicks Surveying, 10 East Main Street, New Hampton, IA 50659, Ph. 641-394-2725

UNITED STATES PUBLIC LAND SURVEY CORNER CERTIFICATE

Land Survey Monuments situated in Section **18**, Township **95** North, Range **11** West of the Fifth Principal Meridian, **Chickasaw** County, Iowa. **1.)** Previously recorded in Document #2002-2124 in the County Recorder's office. **2.)** Previously recorded in Bk. 160, Pg. 430 in the County Recorder's office.

This certificate is being prepared in compliance with Iowa Code Chapter 355.11 because:

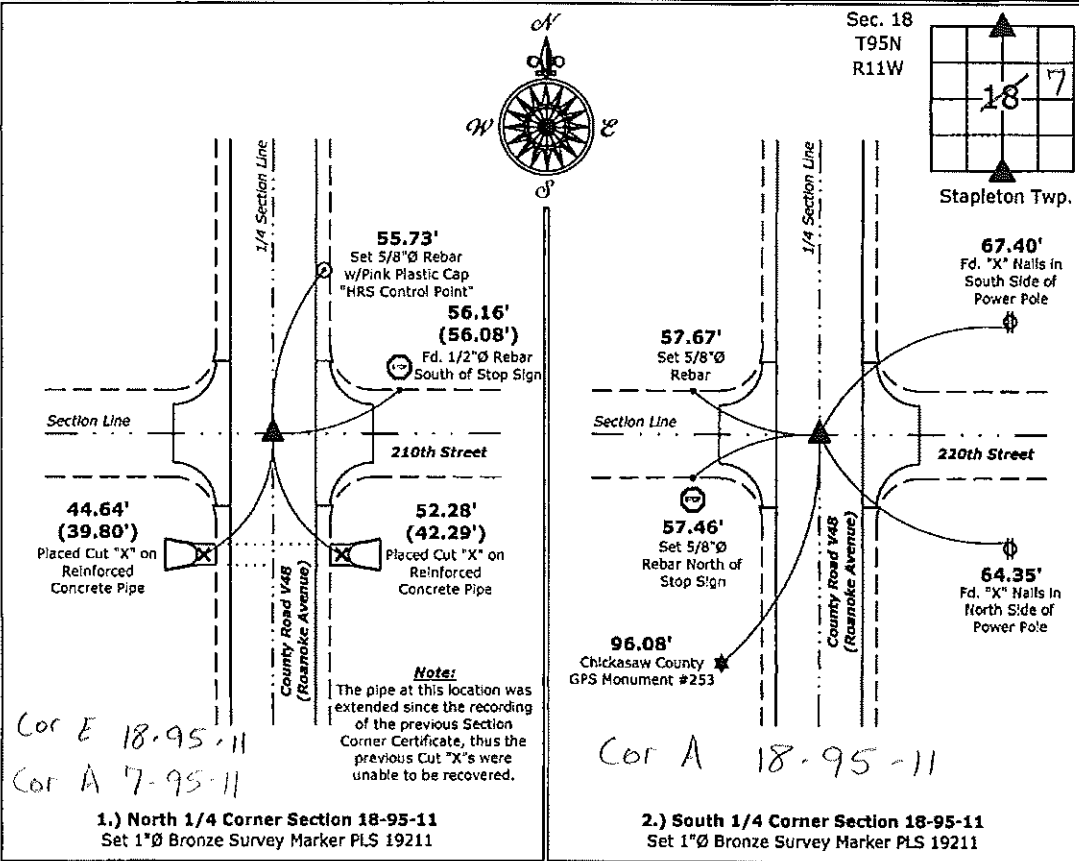
- There is no certificate on file for this corner.
- There are no longer three valid ties of record.
- There are changes to reference ties of record.
- There is change of monumentation of record.
- To clarify description of record monument (ties).

Monument Description and Remarks:

- 1.) North 1/4 Corner:** Set 1"Ø Bronze Survey Marker PLS 19211 at previous location (Found Lead Plug w/Cut-X) with coordinates obtained prior to highway reconstruction, Project #STP-S-CO19(94)--5E-19.
- 2.) South 1/4 Corner:** Set 1"Ø Bronze Survey Marker PLS 19211 at previous location (Found Cut-X) with coordinates obtained prior to highway reconstruction, Project #STP-S-CO19(94)--5E-19.

PLAN - VIEW

(Show a minimum of three reference ties to durable physical objects, relevant monuments and physical conditions that will enable recovery of the corner.)



1.) North 1/4 Corner Section 18-95-11
 Set 1"Ø Bronze Survey Marker PLS 19211

2.) South 1/4 Corner Section 18-95-11
 Set 1"Ø Bronze Survey Marker PLS 19211



I hereby certify that this land surveying document was prepared and the related survey work was performed by me or under my direct personal supervision and that I am a duly licensed Land Surveyor under the laws of the State of Iowa.
Kirk D. Reicks 7-29-15
 Kirk D. Reicks Date:
 License number 19211
 My license renewal date is December 31, 2016.
 Sheets covered by this seal: Individual sheet only

List Corners to be Indexed			
Corners	Section	Twp.	Range
N 1/4	18	95	11
S 1/4	18	95	11

Project Number: 2015-001
 FB: Chickasaw County 7, Pg. 24

File: S:_C3D Projects\2015\2015-001 (V48)\2015-001.dwg, 7/29/2015 10:23:30 AM

DOCUMENT No. 02036 FILED FOR RECORD THE 2nd DAY OF STATE OF IOWA, CHICKASAW COUNTY,
 RECORDING FEE \$ 6.00 May, 1996 AT 8:58 Leith D. Press Recorder
 TRANSFER FEE \$ ----- O'CLOCK A.M. BOOK 160 Deeds PAGE 430 Clara M. Sullivan Deputy

UNITED STATES PUBLIC LAND SURVEY CORNER CERTIFICATE
 OF

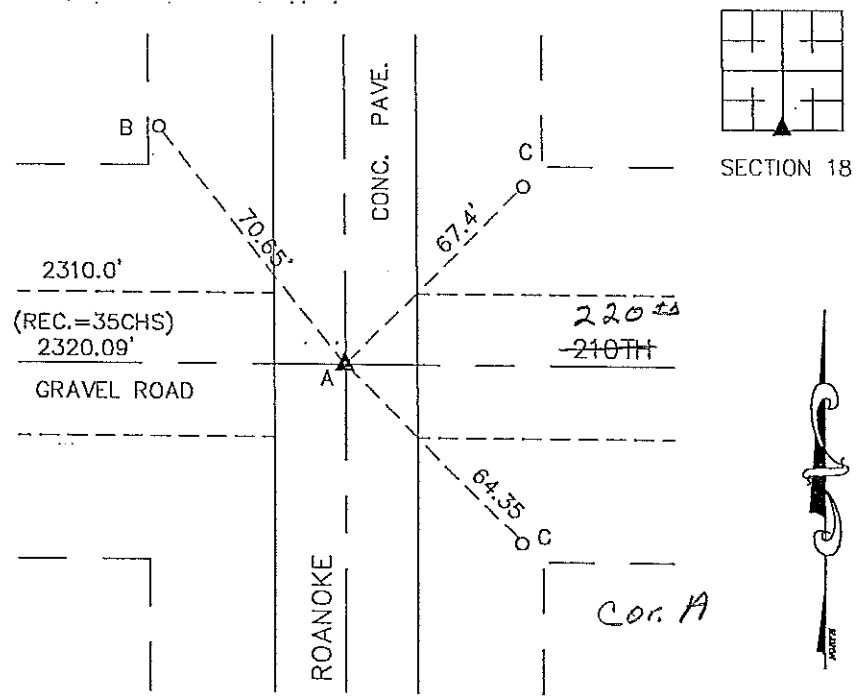
Land Survey Monuments situated in Section 18, Township 95 N, Range 11 W,
 of the Fifth Principal Meridian, CHICKASAW County, Iowa. Previously recorded
 in ----- in County Recorder's Office.

(book, page, document number, etc.)
 (Show reason for preparing this certificate, the evidence and detailed procedures used in establishing the corner positions and
 monumentation found or placed.)

Monument Description and Remarks:
 A - "+" CUT IN PAVEMENT - RESET FROM COUNTY TIES
 B - FOUND IRON PIN
 C - "X" NAILED IN POWER POLE

PLAN VIEW

(Show a minimum of three reference ties to durable physical objects, relevant monuments and physical conditions that will
 enable recovery of the corner.)



S1/4 CORNER
 18 - 95 - 11

I hereby certify that this land surveying document was prepared by
 me or under my direct personal supervision and that I am a duly
 Registered Land Surveyor under the laws of the State of Iowa.
 Signature: Terry D. Van Laningham
 Terry D. Van Laningham, PLS
 Date: Apr 30, 1996 Reg. No. 10793
 My registration renewal date is December 31, 1995.

SEAL



List Corners to be Indexed

Corners	Section	Township	Range
S1/4 COR.	18	95 N	11 W

TERRY D. VAN LANINGHAM, PLS. INC.
 810 12TH AVE. NW, WAVERLY, IOWA (319) 352 - 2132

160 430