

Chickasaw Co. Recorder  
 Cindy Messersmith  
**Fee Book 2007-0576**  
 03/26/2007 80848AM  
 SCC SEC COR CERT  
 Book: Page: # Pages: 1  
 Total Fees: \$7.00

*Section 18-95-11  
 As referred to in  
 Eng. Tie Book*

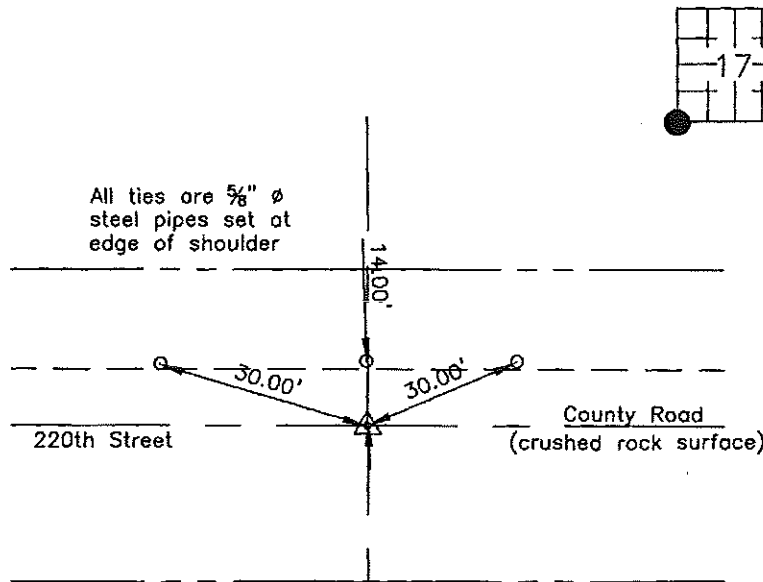
Prepared by: Erdman Engineering, P.C., 708 Commerce Drive, P.O. Box 246, Decorah, Iowa 52101 (563) 382-4194

United States Public Land Survey Corner Certificate

of 18  
 Land Survey Monuments situated in Section 17, Township 95, Range 11 West of  
 the 5th Principal Meridian in Chickasaw County, Iowa. Previously recorded in  
does not apply in the county Recorder's Office.

Monument Description and Remarks: This certificate is prepared in accordance with  
 Section 193C of the Code of Iowa. No previous certificate has been filed for this  
 corner location. Based on Chickasaw County Engineer's Reference Ties we found a  $\frac{5}{8}$ "  
 diameter steel bar at the approximate centerline of the county road that matches the  
 description of the monument that had been previously set in 1956 at the SW Corner of  
 Section 17, Township 95 North, Range 11 West.

Plan-View



*Cor B  
 18-95-11*

I hereby certify that this land surveying document  
 was prepared and the related survey work was  
 performed by me or under my direct personal  
 supervision and that I am a duly licensed Land  
 Surveyor under the laws of the State of Iowa.

Signature: *Lindsay Erdman*  
 Lindsay Erdman, P.E. and P.L.S. Iowa License Number 11442

Date: 3/22/07

My license renewal date is December 31, 2008

Corner(s) to be indexed

Corner	Section	Township	Range
SW	17	95	11