

Instrument #: 2017-2013  
 11/30/2017 03:35:06 PM Total Pages: 1  
 SCC SECTION CORNER CERTIFICATES  
 Recording Fee: \$ 7.00  
 Cindy Messersmith, Recorder, Chickasaw County Iowa



Prepared by & Return to: Herold - Reicks Surveying, 10 East Main Street, New Hampton, IA 50659, Ph. 644-394-2725

### United States Public Land Survey Corner Certificate

Land Survey Monument situated in  
 Section 1, Township 95 North, Range 11 West of the Fifth Principal Meridian, Chickasaw County, Iowa.  
 Not on file in the County Recorder's office.

This certificate is being prepared in compliance with Iowa Code Chapter 355.11 because:

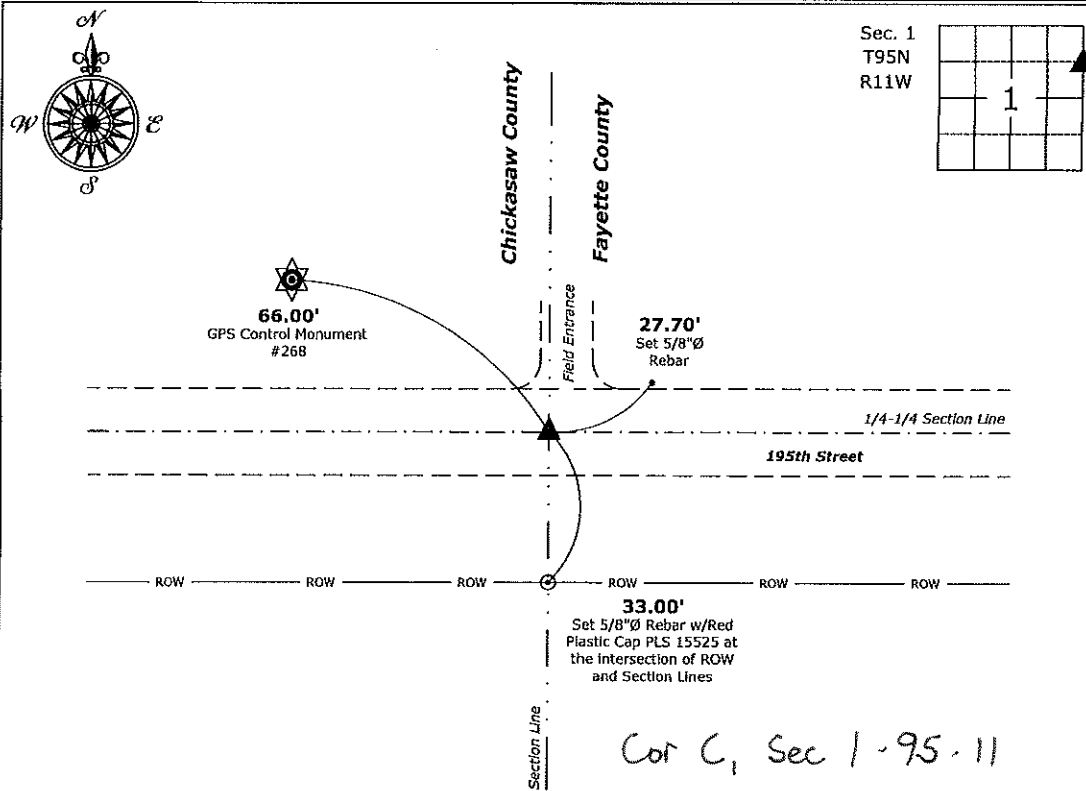
- There is no certificate on file for this corner.
- There are no longer three valid ties of record.
- There are changes to reference ties of record.
- There is change of monumentation of record.
- To clarify description of record monument (ties).

#### Monument Description and Remarks:

**Northeast Corner SE 1/4 - NE 1/4:** Found 1/2" Ø Iron Pin with information obtained from the Chickasaw County Engineers office in Field Book Stapleton Twp. Corner Ties, and from the Fayette County Engineers Office in Field Book 59E Page 1.

#### Plan View

(Show a minimum of three reference ties to durable physical objects, relevant monuments and physical conditions that will enable recovery of the corner.)



**Northeast Corner SE 1/4 - NE 1/4 of Section 1-95-11**  
 Found 1/2" Ø Iron Pin

Cor C, Sec 1-95-11



I hereby certify that this land surveying document was prepared and the related survey work was performed by me or under my direct personal supervision and that I am a duly licensed Land Surveyor under the laws of the State of Iowa.

*Paul R. Herold* 11-30-17  
 Paul R. Herold Date:  
 License number 15525  
 My license renewal date is December 31, 2018.  
 Sheets covered by this seal: Individual sheet only

List Corner to be Indexed			
Corner	Section	Twp.	Range
NE-SE-NE	1	95	11
Project Number: 2017-130			
FB: Chickasaw 8, Pgs. 46-47			

File: S:\\_CSD Projects\County Control Systems\CHICKASAW\CHICK-31.dwg, 11/30/2017 2:43:39 PM