

CINDY MESSERSMITH
 COUNTY RECORDER

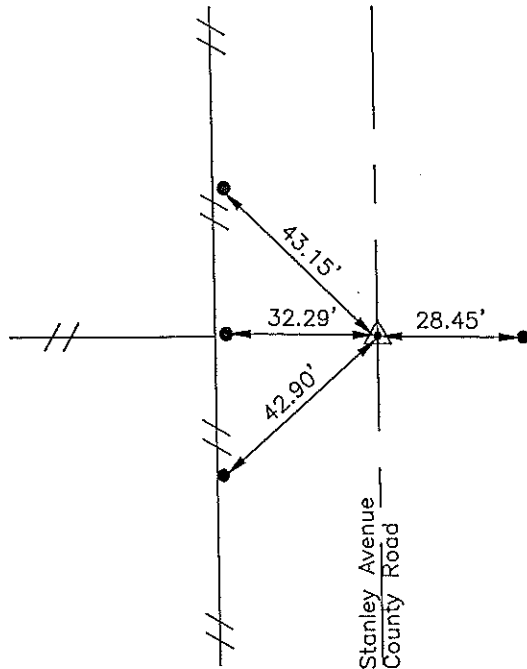
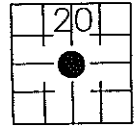
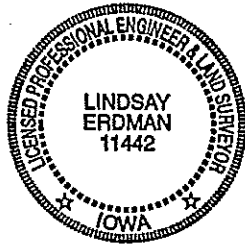
Prepared by: Erdman Engineering, P.C. 708 Commerce Drive, P.O. Box 246 Decorah, Iowa 52101, (563)382-4194

United States Public Land Survey Corner Certificate
 of

Land Survey Monuments situated in Section 20, Township 95, Range 11 West of
 the 5th Principal Meridian in Chickasaw County, Iowa. Previously recorded in
does not apply in the county Recorder's Office.

Monument Description and Remarks: This certificate is prepared in accordance with
 Section 193C of the Code of Iowa. No previous certificate has been filed for this
 corner location. Based on Chickasaw County Engineer's Reference Ties for corner "O" of
 Section 20 of Stapleton township, we found four steel bar with yellow plastic caps
 marked "Chick County" used previously as tie markers. From these ties we found a 5/8"
 steel bar at the approximate center line of the county road and in line with the fence
 line running west. County Engineer's records show that the monument was retied in
 1998 but do not state was used as the monument. Based on this we accepted the
 steel bar as the Center Section of Section 20, Township 95 North, Range 11 West.

Plan-View



All ties are a
 found steel
 bar with
 yellow plastic
 cap "Chick
 County"

Cor. O

I hereby certify that the survey work was completed
 and this certificate was prepared by me or under my
 direct supervision and that I am a duly registered
 land surveyor under the laws of the State of Iowa.

Signature: *Lindsay Erdman*
 Lindsay Erdman, P.E. and L.S.

Date: *7/16/01* Reg. No. 11442

My license renewal date is December 31, 2002

Corner(s) to be Indexed

Corner	Section	Township	Range
C.S.	20	95	11

Entered