

CINDY MESSERSMITH  
 COUNTY RECORDER

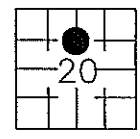
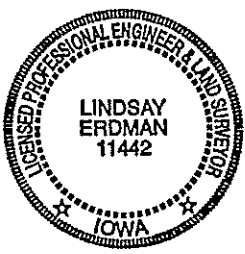
Prepared by: Erdman Engineering, P.C. 708 Commerce Drive, P.O. Box 246 Decorah, Iowa 52101,(563)382-4194

United States Public Land Survey Corner Certificate  
 of

Land Survey Monuments situated in Section 20, Township 95, Range 11 West of  
 the 5th Principal Meridian in Chickasaw County, Iowa. Previously recorded in  
does not apply in the county Recorder's Office.

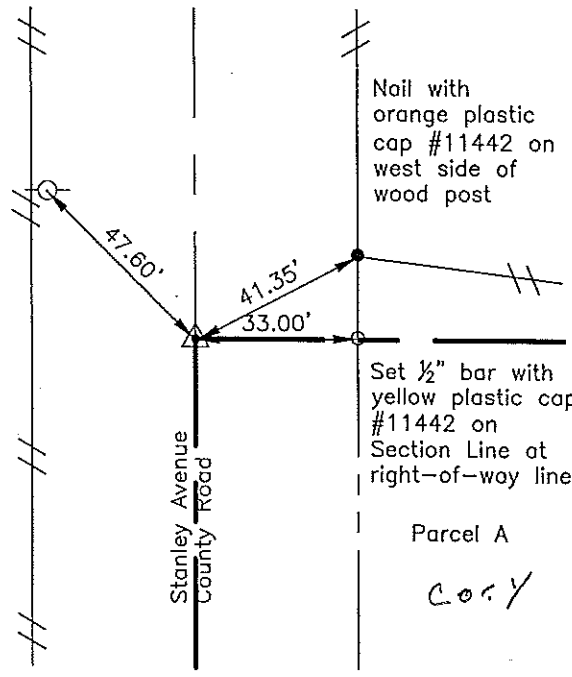
Monument Description and Remarks: This certificate is prepared in accordance with  
 Section 193C of the Code of Iowa. No previous certificate has been filed for this  
 corner location. We found no record of the N 1/8 Corner being set. We found no  
 evidence of a monument in the field. We found the Center Section and set the N 1/4  
 Corner from County Ties. Based on these monuments we set a 1/2" diameter steel bar  
 with yellow plastic cap #11442 on line and midway between the N 1/4 Corner and the  
 Center Section as the N 1/8 Corner of section 20, Township 95 North, Range 11 West.

Plan-View



Cor. Y

Nail with orange  
 plastic cap  
 #11442 on north  
 side of power  
 pole



Nail with  
 orange plastic  
 cap #11442 on  
 west side of  
 wood post

Set 1/2" bar with  
 yellow plastic cap  
 #11442 on  
 Section Line at  
 right-of-way line

Parcel A

Cor. Y

I hereby certify that the survey work was completed  
 and this certificate was prepared by me or under my  
 direct supervision and that I am a duly registered  
 land surveyor under the laws of the State of Iowa.

Signature: *[Signature]*  
 Lindsay Erdman, P.E. and L.S.

Date: 7/12/01 Reg. No. 11442

My license renewal date is December 31, 2002

Corner(s) to be Indexed

Corner	Section	Township	Range
N 1/8	20	95	11