

2004 NOV 24 AM 9 06

CINDY MESSERSMITH
 COUNTY RECORDER

PREPARED BY KENNETH D. STARK 1622 SOUTH TAFT AVENUE, MASON CITY, IOWA, 50401 641-423-7847

UNITED STATES PUBLIC LAND SURVEY CORNER CERTIFICATE
 NA OF

Land Survey Monuments situated in Section 16, Township 95N, Range 11W
 of the Fifth Principal Meridian, CHICKASAW County, Iowa.

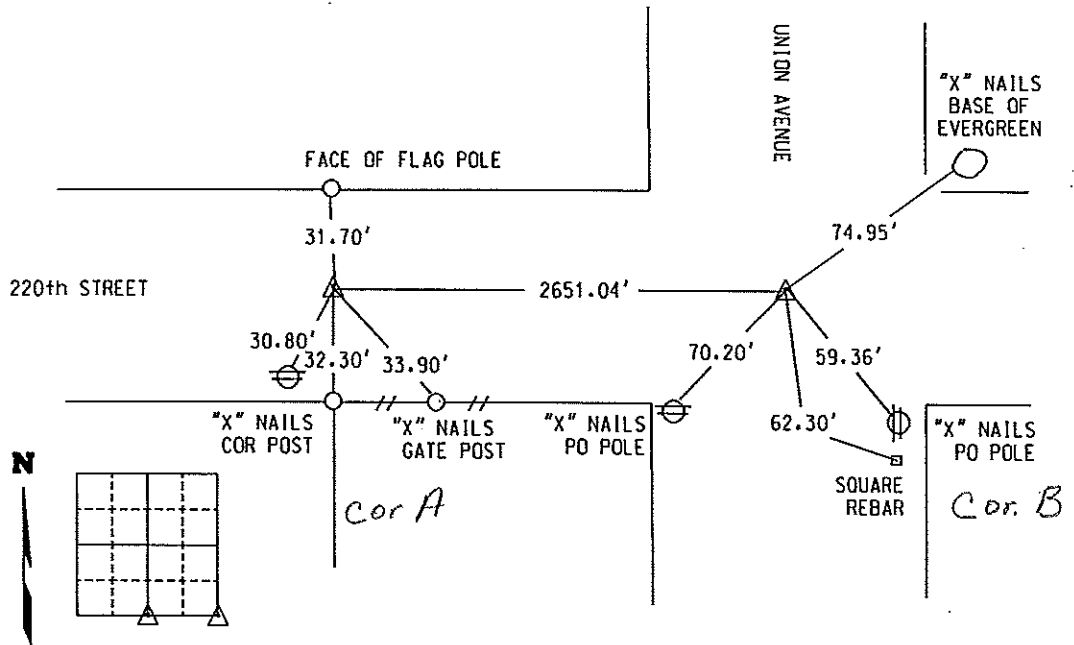
Previously recorded in 2004-2648 in County Recorder's Office.
(book, page, document number, etc.)

(Show reason for preparing this certificate, the evidence and detailed procedures used in establishing the corner positions and monumentation found or placed.)

Monument Description and Remarks: _____

S¹/₄ COR = FOUND PIPE PER COUNTY TIES
SE COR = CUT "X" IN CONCRETE USING COUNTY TIES

(Show a minimum of three reference ties to durable physical objects, relevant monuments and physical conditions that will enable recovery of the corner.)



List Corners to be Indexed

Corner	Section	Township	Range
S ¹ / ₄ COR	16	95	11
SE COR	16	95	11

LICENSED LAND SURVEYOR

KENNETH D. STARK

10898

IOWA

I hereby certify that this land surveying document was prepared and the related survey work was performed by me or under my personal supervision and that I am a duly licensed Land Surveyor under the laws of the state of Iowa.

Kenneth D. Stark Date 11-23-04

Kenneth D. Stark Date

License number 10898

My License renewal date is December 31, 2005

Pages or sheets covered by this seal. 1