

Section 23-95-11  
As referred to in  
Engr Tie Book

FILED 2005 - 0160  
RECORDER'S OFFICE  
CHICKASAW COUNTY, IOWA  
2005 JAN 26 AM 8 30  
CINDY MESSERSMITH  
COUNTY RECORDER

TeKIPPE ENGINEERING, P.C., 128 South Vine Street, West Union, Iowa 52175 Phone (563) 422-5131

UNITED STATES PUBLIC LAND SURVEY CORNER CERTIFICATE

OF 23  
Land Survey Monuments situated in Section 24, Township 95 North, Range 11 West of the Fifth Principal Meridian, CHICKASAW County, Iowa.  
Previously recorded in none in County Recorder's Office.  
(book, page, document number, etc.)

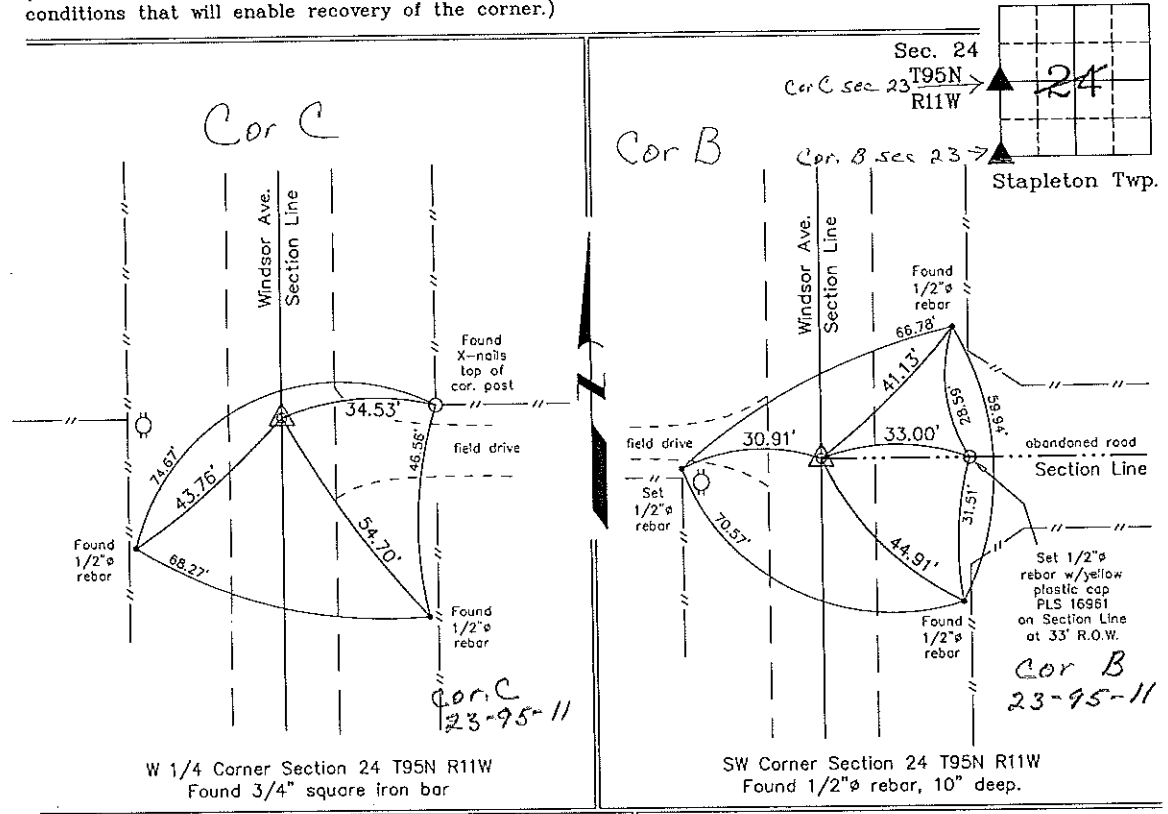
(Show reason for preparing this certificate, the evidence and detailed procedures used in establishing the corner positions and monumentation found or placed.)

Monument Description and Remarks: W 1/4 Corner Section 24 T95N R11W: Found 3/4" square iron bar with information obtained from the Chickasaw County Engineer's Office for Corner 'C', Section 23.

SW Corner Section 24 T95N R11W: Found 1/2" rebar, 10" deep, with information obtained from the Chickasaw County Engineer's Office for Corner 'B', Section 23.

PLAN - VIEW

(Show a minimum of three reference ties to durable physical objects, relevant monuments and physical conditions that will enable recovery of the corner.)



I hereby certify that this land surveying document was prepared and the related survey work was performed by me or under my direct personal supervision and that I am a duly licensed Land Surveyor under the laws of the State of Iowa.  
*Michael J. Shimak* January 24, 2005  
Michael J. Shimak Date  
License number 16961  
My license renewal date is December 31, 2005.  
Sheets covered by this seal: Individual

List Corners to be Indexed			
Corners	Section	Twp.	Range
W 1/4	24	95N	11W
SW	24	95N	11W

Project Number 05008.IS  
FR 46L PG. 28-29  
X:\Section Corners\Sec. 24\24-95-11ku.dwg

County Engineer's  
Copy