

Prepared by & Return to: Harold - Reicks Surveying, 13 East Main Street, New Hampton, IA 50658, Ph. 641-394-2725

### UNITED STATES PUBLIC LAND SURVEY CORNER CERTIFICATE

Land Survey Monuments situated in Section 13, Township 95 North, Range 11 West of the Fifth Principal Meridian, Chickasaw County, Iowa. Previously recorded in Deed Bk. 161, Pg. 89 in the County Recorder's office.

This certificate is being prepared in compliance with Iowa Code Chapter 355.11 because:

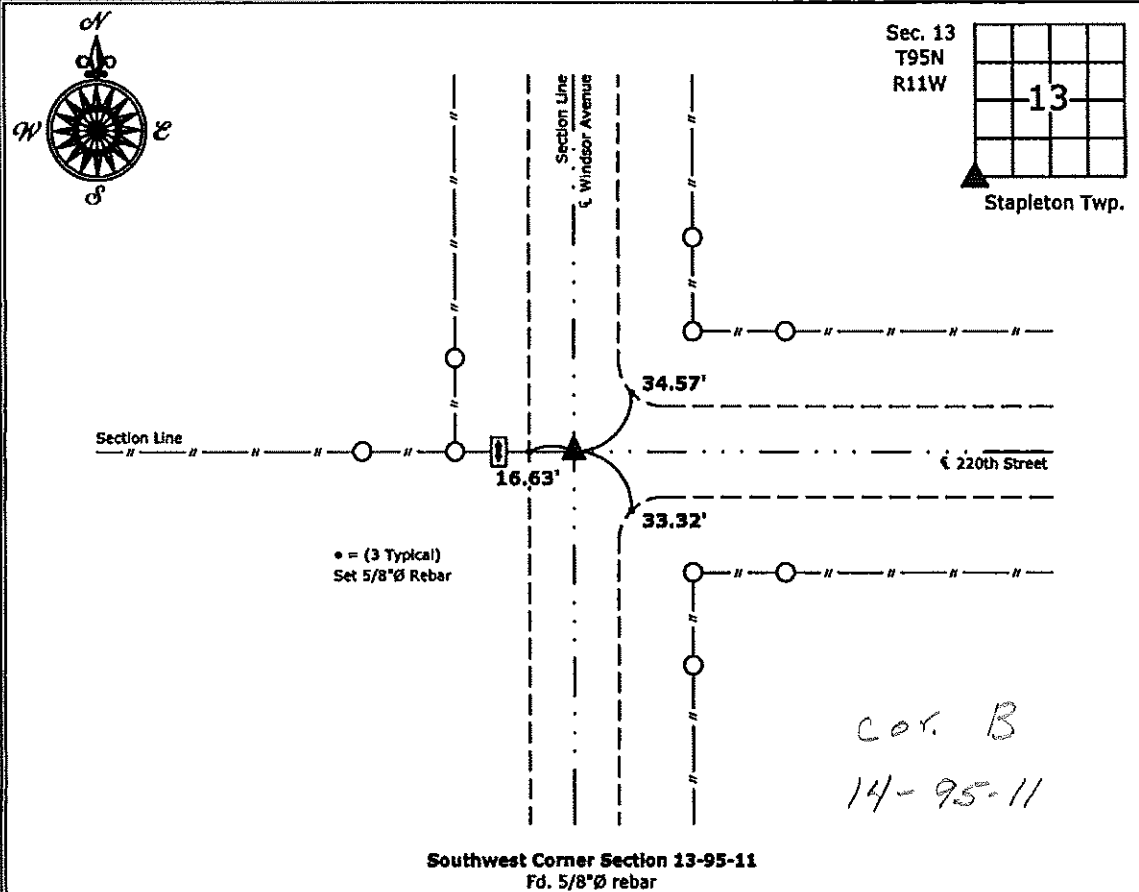
- There is no certificate on file for this corner.
- There are no longer three valid ties of record.
- There are changes to reference ties of record.
- There is change of monumentation of record.
- To clarify description of record monument (ties).

Monument Description and Remarks:

**Southwest Corner:** Fd. 5/8" rebar with information obtained from the previous Section Corner Certificate. The previous Certificate noted a nail with flagging as the monument, however no nail was found. All previous ties were to wood posts that were leaning; set new ties to update corner.

#### PLAN - VIEW

(Show a minimum of three reference ties to durable physical objects, relevant monuments and physical conditions that will enable recovery of the corner.)



Southwest Corner Section 13-95-11  
 Fd. 5/8" rebar



I hereby certify that this land surveying document was prepared and the related survey work was performed by me or under my direct personal supervision and that I am a duly licensed Land Surveyor under the laws of the State of Iowa.  
*Kirk D. Reicks 11-30-12*  
 Kirk D. Reicks Date:  
 License number 19211  
 My license renewal date is December 31, 2012.  
 Sheets covered by this seal: Individual sheet only

List Corners to be Indexed			
Corners	Section	Twp.	Range
SW	13	95	11
Project Number: 2013-008			
FB: Chickasaw County 4, Pgs. 74, 75			

Section 14-95-11  
 As referred to in  
 Engr. Tie Book

PAUL H. HELLAND, 2322 W. 1ST ST., SUITE B, CEDAR FALLS, IOWA 50613, (319)-266-0161

UNITED STATES PUBLIC LAND SURVEY CORNER CERTIFICATE  
 OF

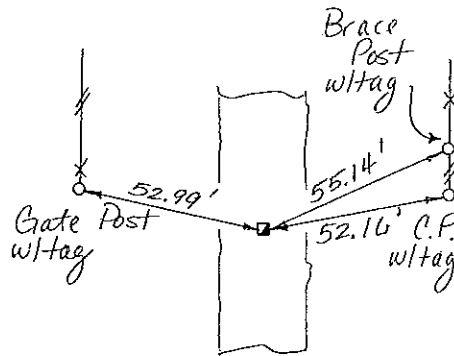
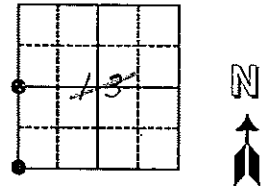
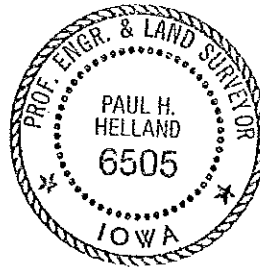
Land Survey Monuments situated in Section 13 14, Township 95, Range 11, of the Fifth Principal Meridian, Chickasaw County, Iowa.  
 Previously recorded in Book \_\_\_\_\_, Page \_\_\_\_\_.

(Show reason for preparing this certificate, the evidence and detailed procedures used in establishing the corner positions and monumentation found or placed.)

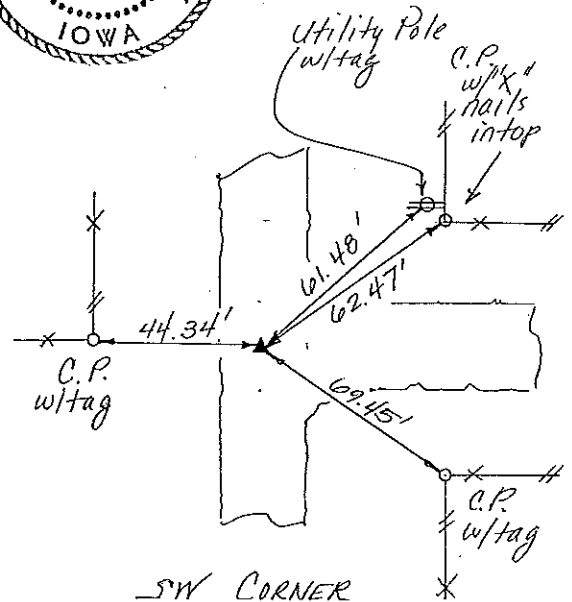
Monument Description and Remarks: Survey of 3 1/2 SW 1/4 Sec. 13.  
W 1/4 Cor. - Found 1/2" Twist pin 0.8' Deep  
SW Cor - Found nail w/flagging 0.3' Deep

PLAN - VIEW

(Show a minimum of three reference ties to durable physical objects, relevant monuments and physical conditions that will enable recovery of the corner.)



W 1/4 CORNER  
Cor C 1495-11



SW CORNER  
Cor B 14 95-11

96-231

I HEREBY CERTIFY THAT THIS PLAT, MAP, SURVEY OR REPORT WAS MADE BY ME OR UNDER MY DIRECT PERSONAL SUPERVISION AND THAT I AM A DULY REGISTERED LAND SURVEYOR UNDER THE LAWS OF THE STATE OF IOWA  
 PAUL H. HELLAND, P.E. & R.L.S. IOWA REGISTRATION NO. 6505  
 MY REGISTRATION EXPIRES DECEMBER 31, 1997

**HES**  
 HELLAND ENGINEERING & SURVEYING, LTD.  
 THUNDER RIDGE BANK BUILDING  
 2322 WEST 1ST ST., SUITE B  
 CEDAR FALLS, IOWA 50613  
 319-266-0161

List Corners to be Indexed

Corners	Section	Twp	Range
W 1/4	13	95	11
SW	13	95	11

Placed in Tie Book

Engr. Copy.

161-89

6-6-96