

UNITED STATES PUBLIC LAND SURVEY CORNER CERTIFICATE

OF

Land Survey Monuments situated in Section 24 13, Township 95 NORTH, Range 11 WEST, of the Fifth Principal Meridian, CHICKASAW County, Iowa. Previously recorded in NONE in County Recorder's Office.

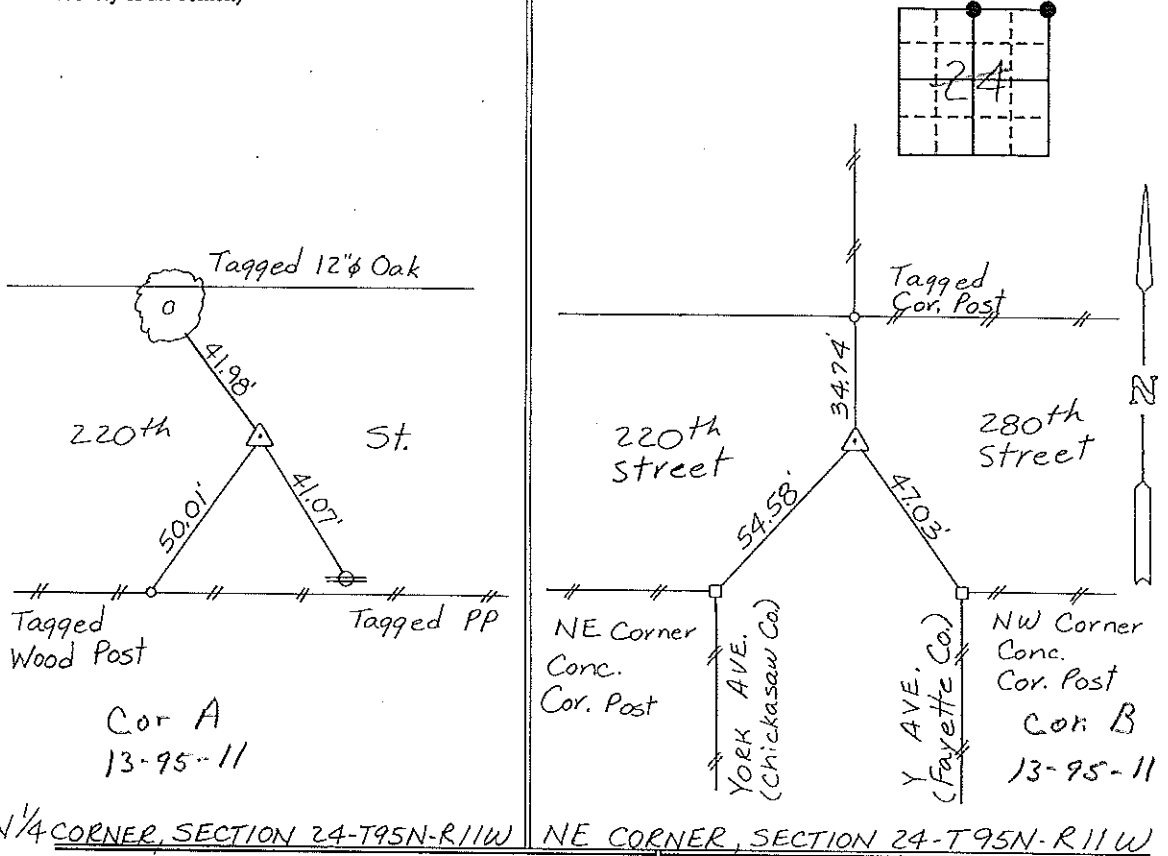
(Show reason for preparing this certificate, the evidence and detailed procedures used in establishing the corner positions and monumentation found or placed.)

Monument Description and Remarks: N 1/4 CORNER, SECTION 24-T95N-R11W:  
Found 1/2" φ Iron Bar.  
NE CORNER, SECTION 24-T95N-R11W: Found 3/8" φ Iron Pin  
15" Deep, Raised using 1/2" φ Rebar with cap.

Section 13-95-11  
As referred to in  
Engr. Tie Book

PLAN - VIEW

(Show a minimum of three reference ties to durable physical objects, relevant monuments and physical conditions that will enable recovery of the corner.)



N 1/4 CORNER, SECTION 24-T95N-R11W      NE CORNER, SECTION 24-T95N-R11W

I hereby certify that the survey work was completed and this certificate was prepared by me or under my direct personal supervision and that I am a duly registered land surveyor under the laws of the state of Iowa.

Signature: Gary L. Casady  
Name typed or printed: Gary L. Casady  
Date: 4-27-94 Reg. No. 12532  
My Registration Expires December 31, 1994

Corners	Section	Twp	Range
N 1/4 Cor	24	95N	11W
NE Cor	24	95N	11W

13-95-11      13-95-11

Placed in Tie Book 5/10/94



SEAL

BK Pg.  
154-456

"County Engineer's Copy"

UNITED STATES PUBLIC LAND SURVEY CORNER CERTIFICATE

OF

Land Survey Monuments situated in Section 13, Township 95N, Range 11W, of the Fifth Principal Meridian, CHICKASAW County, Iowa. Previously recorded in NCA in County Recorder's Office.

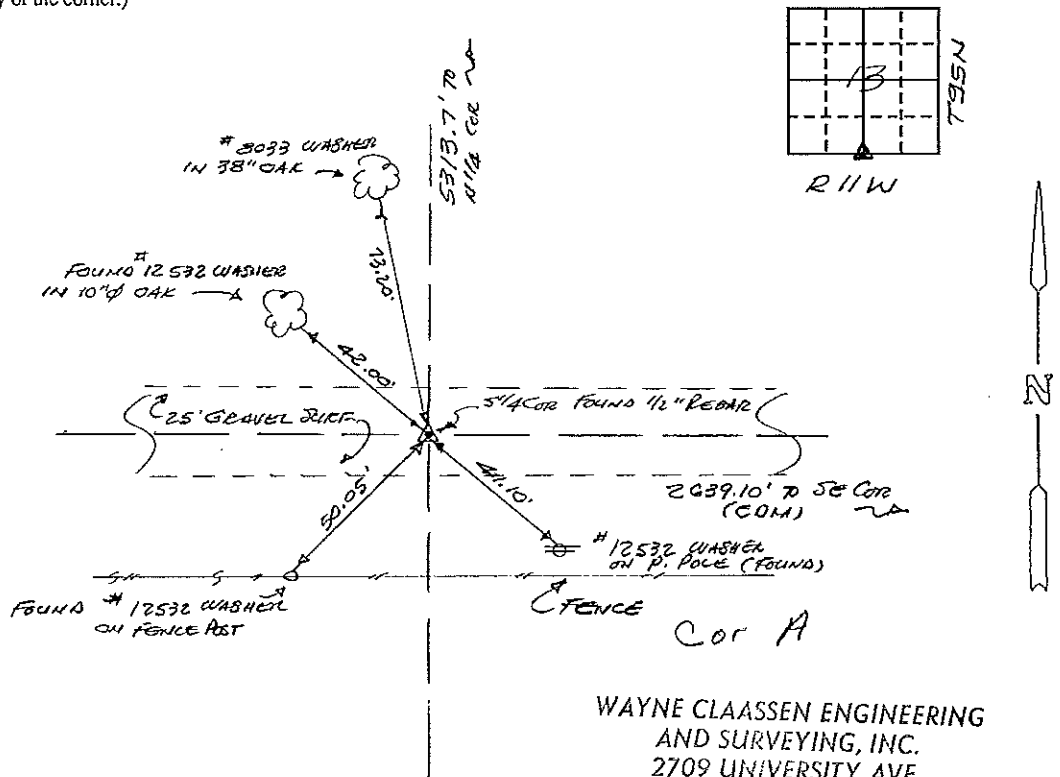
(book, page, document number, etc.)

(Show reason for preparing this certificate, the evidence and detailed procedures used in establishing the corner positions and monumentation found or placed.)

Monument Description and Remarks: FOUND 1/2" REBAR PER PLAT OF SECUR VIEW SUB-DIVISION DATED 12-15-1979 & CHECK DIST FROM SE CORNER PLAT = 2639.47 THIS SURVEY = 2639.10

PLAN - VIEW

(Show a minimum of three reference ties to durable physical objects, relevant monuments and physical conditions that will enable recovery of the corner.)

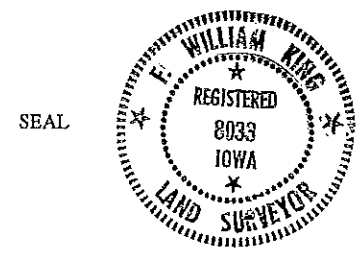


391-65

WAYNE CLAASSEN ENGINEERING AND SURVEYING, INC. 2709 UNIVERSITY AVE. P.O. BOX 898 WATERLOO, IA 50704

I hereby certify that the survey work was completed and this certificate was prepared by me or under my direct personal supervision and that I am a duly registered land surveyor under the laws of the state of Iowa.

Signature: F. William King  
 Name typed or printed: F. WILLIAM KING  
 Date: 4-21-1994 Reg. No. 8033



Corners	List Corners to be Indexed Section	Twp	Range
51/4	13	95N	11W

Corner A 13-95-11  
 Placed in tie book  
 4/22/94