

TeKIPPE ENGINEERING, P.C., 128 South Vine Street, West Union, Iowa 52175 Phone (563) 422-5131

UNITED STATES PUBLIC LAND SURVEY CORNER CERTIFICATE

OF

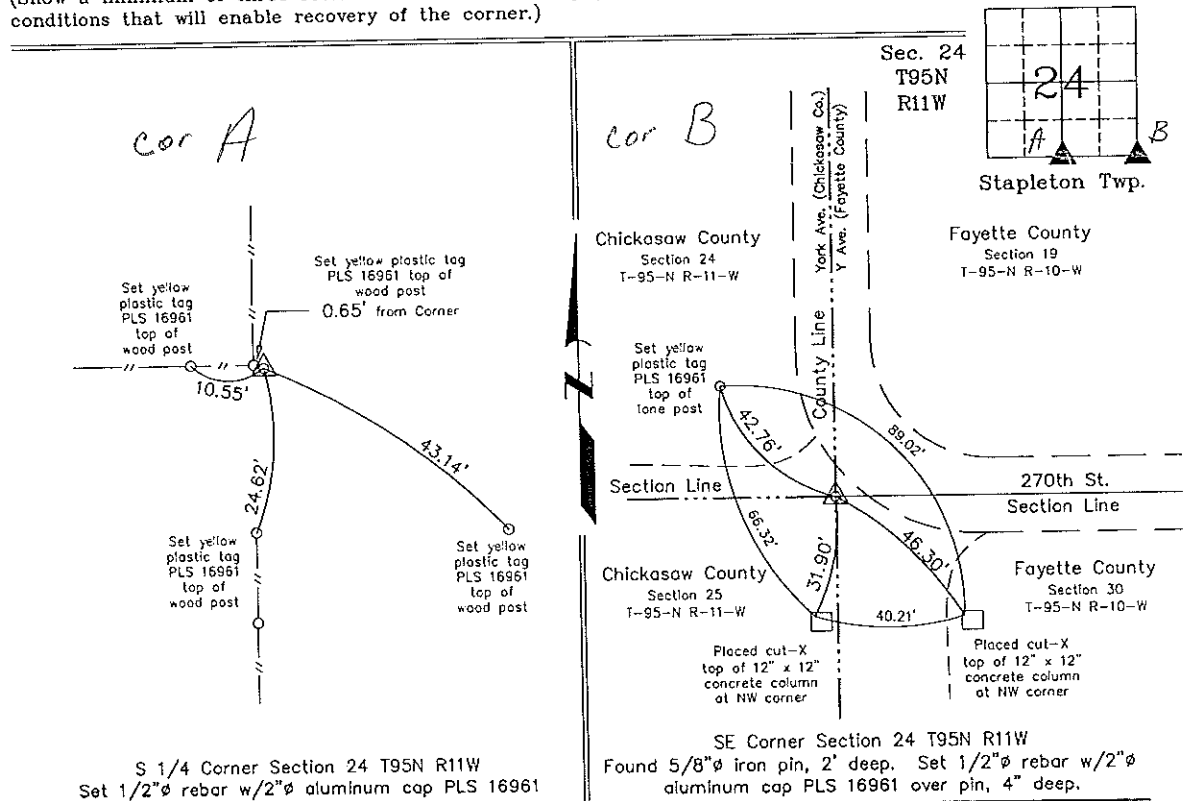
Land Survey Monuments situated in Section 24, Township 95 North, Range 11 West of the Fifth Principal Meridian, CHICKASAW County, Iowa.
 Previously recorded in none in County Recorder's Office.
 (book, page, document number, etc.)

(Show reason for preparing this certificate, the evidence and detailed procedures used in establishing the corner positions and monumentation found or placed.)

Monument Description and Remarks: S 1/4 Corner Section 24 T95N R11W: Set 1/2"Ø rebar w/2"Ø aluminum cap PLS 16961 at fence post using information obtained from the Chickasaw County Engineer's Office for Corner 'A', Section 24.
SE Corner Section 24 T95N R11W: Found 5/8"Ø iron pin, 2' deep, with information obtained from the Fayette County Engineer's Office in Field Book 59, Page 39, SW Corner Section 19-T95N-R10W. Set 1/2"Ø rebar w/2"Ø aluminum cap PLS 16961 over found pin, 4" deep.

PLAN - VIEW

(Show a minimum of three reference ties to durable physical objects, relevant monuments and physical conditions that will enable recovery of the corner.)



S 1/4 Corner Section 24 T95N R11W
 Set 1/2"Ø rebar w/2"Ø aluminum cap PLS 16961

SE Corner Section 24 T95N R11W
 Found 5/8"Ø iron pin, 2' deep. Set 1/2"Ø rebar w/2"Ø aluminum cap PLS 16961 over pin, 4" deep.



I hereby certify that this land surveying document was prepared and the related survey work was performed by me or under my direct personal supervision and that I am a duly licensed Land Surveyor under the laws of the State of Iowa.

Michael J. Shimak January 24, 2005
 Michael J. Shimak Date
 License number 16961
 My license renewal date is December 31, 2005.
 Sheets covered by this seal: Individual

List Corners to be Indexed			
Corners	Section	Twp.	Range
S 1/4	24	95N	11W
SE	24	95N	11W

Project Number 05008.LS
 FB. 46L PG. 28-29

X:\Section Corners\Sec. 24\24-95-11wy.dwg

County Engineer's Copy