

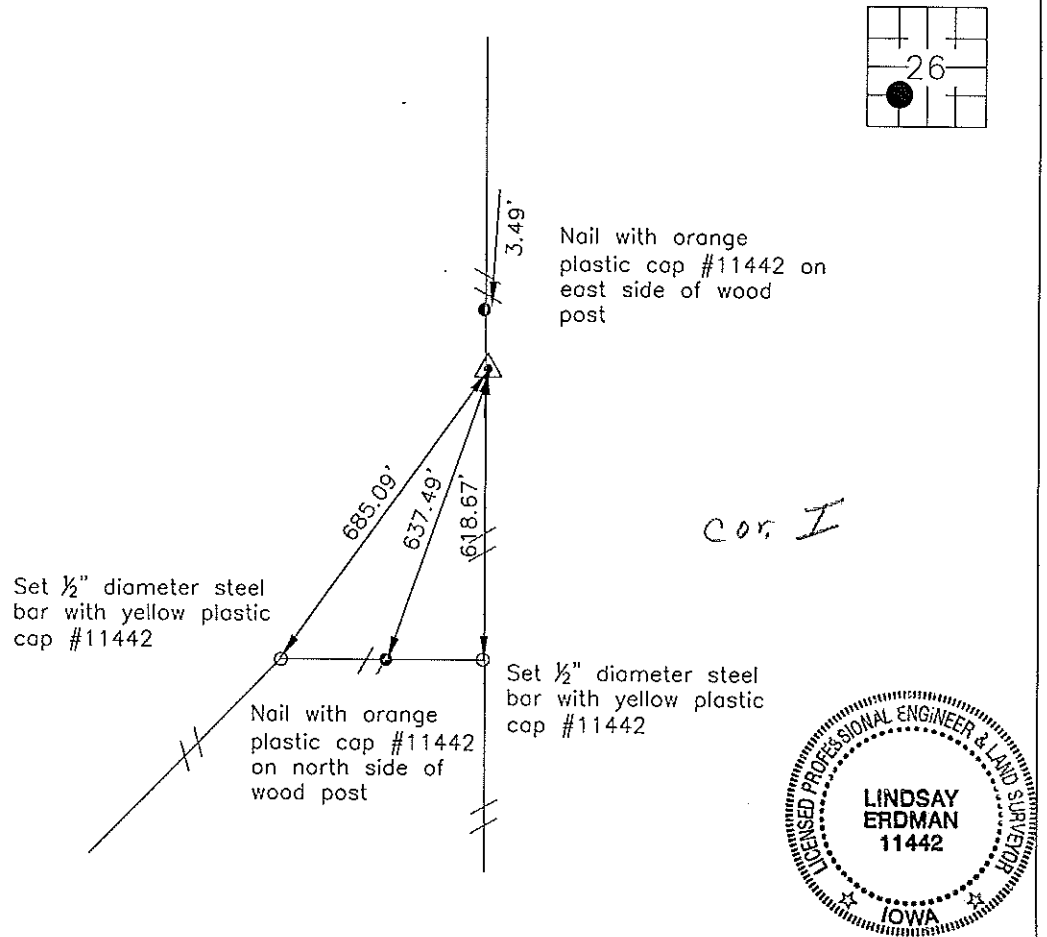
Prepared by: Erdman Engineering, P.C., 708 Commerce Drive, P.O. Box 246, Decorah, Iowa 52101 (563) 382-4194

United States Public Land Survey Corner Certificate
 of

Land Survey Monuments situated in Section 26, Township 95, Range 11 West of the 5th Principal Meridian in Chickasaw County, Iowa. Previously recorded in does not apply in the county Recorder's Office.

Monument Description and Remarks: This certificate is prepared in accordance with Section 193C of the Code of Iowa. No previous certificate has been filed for this corner location. We found no record of the SW $\frac{1}{6}$ corner being set. We found no evidence of a monument in the field other than and existing fence line running north and south. We found the W $\frac{1}{4}$ Corner, Center Section, S $\frac{1}{4}$ Corner and SW Corner. We set a $\frac{3}{4}$ " diameter steel bar with 2" aluminum cap #11442 at the intersection of the lines from the midpoints of the four sides of the Southwest Quarter as the SW $\frac{1}{6}$ Corner of Section 26, Township 95 North, Range 11 West.

Plan-View



I hereby certify that this land surveying document was prepared and the related survey work was performed by me or under my direct personal supervision and that I am a duly licensed Land Surveyor under the laws of the State of Iowa.

Signature Lindsay Erdman
 Lindsay Erdman, P.E. and P.L.S., Iowa License Number 11442

Date: 8/11/08

My license renewal date is December 31, 2008

Corner(s) to be Indexed

Corner	Section	Township	Range
SW 1/16	26	95	11

3695