

Section 23-95-11  
 As referred to in  
 Engr. Tr. Book

FILED 2003-0097  
 RECORDER'S OFFICE  
 CHICKASAW COUNTY, IOWA  
 '03 JAN 13 AM 9 24  
 CINDY MESSERSMITH  
 COUNTY RECORDER

TEKIPPE ENGINEERING, P.C., 128 South Vine Street, West Union, Iowa 52175 Phone (563) 422-6131

UNITED STATES PUBLIC LAND SURVEY CORNER CERTIFICATE

OF

Land Survey Monuments situated in Section 26, Township 95 North, Range 11 West of the Fifth Principal Meridian, CHICKASAW County, Iowa. Previously recorded in none in County Recorder's Office.  
 (book, page, document number, etc.)

(Show reason for preparing this certificate, the evidence and detailed procedures used in establishing the corner positions and monumentation found or placed.)

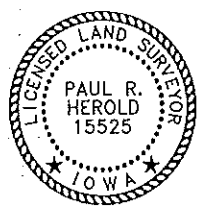
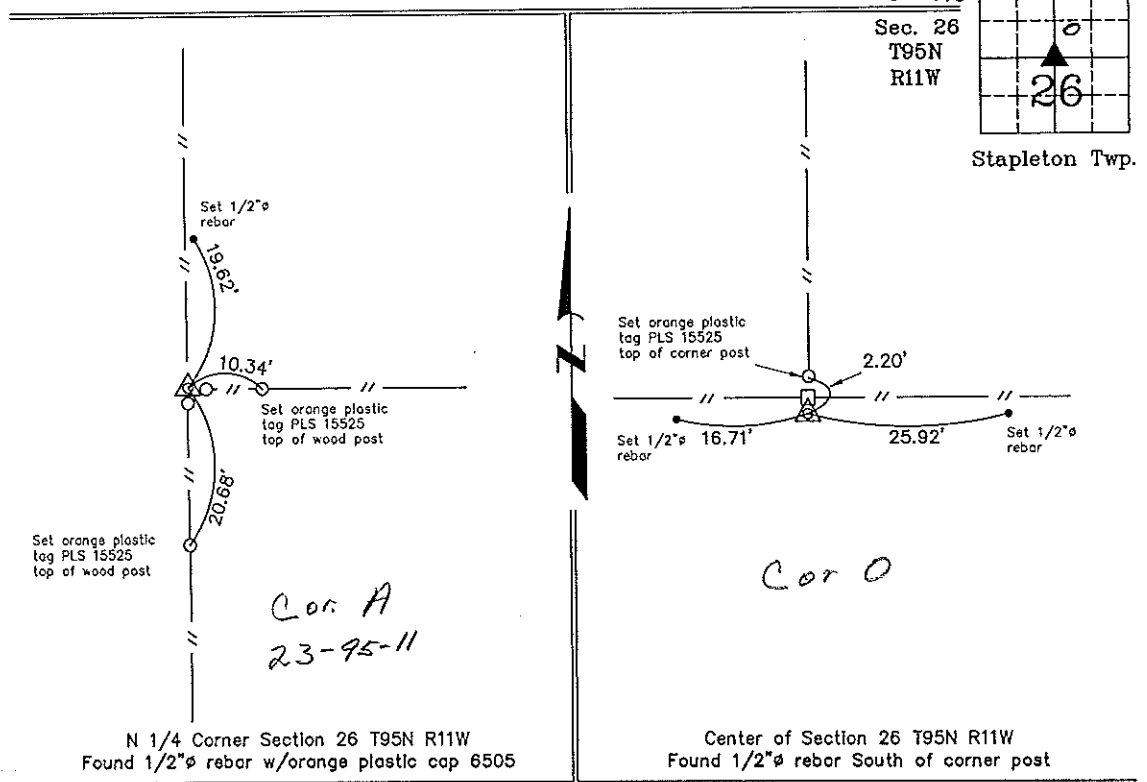
Monument Description and Remarks: N 1/4 Corner Section 26 T95N R11W: Found 1/2"φ rebar w/orange plastic cap 6505.  
Center of Section 26 T95N R11W: Found 1/2"φ rebar South side of corner post.

NOTE: Both Corners were found with information obtained from a Survey and Plat made by Paul H. Helland recorded in the Chickasaw County Recorder's Office February 1, 1989 in Book 142, Page 150.

PLAN - VIEW

Project Number 02282.LS  
 FB. 46K PG. 53-56

(Show a minimum of three reference ties to durable physical objects, relevant monuments, and physical conditions that will enable recovery of the corner.)



I hereby certify that this land surveying document was prepared and the related survey work was performed by me or under my direct personal supervision and that I am a duly licensed Land Surveyor under the laws of the State of Iowa.  
Paul R. Herold 1-9-03  
 Paul R. Herold Date  
 License number 15525  
 My license renewal date is December 31, 2004.  
 Sheets covered by this seal: Individual

List Corners to be Indexed			
Corners	Section	Twp.	Range
N 1/4	26	95N	11W
Center	26	95N	11W

Filed 1-14-03

County Engineer's Copy