

FILED 2003 - 0099
 RECORDER'S OFFICE
 CHICKASAW COUNTY, IOWA
 '03 JAN 13 AM 9 25
 CINDY MESSERSMITH
 COUNTY RECORDER

TeKIPPE ENGINEERING, P.C., 128 South Vine Street, West Union, Iowa 52175 Phone (563) 422-5131

UNITED STATES PUBLIC LAND SURVEY CORNER CERTIFICATE

OF

Land Survey Monuments situated in Section 26, Township 95 North, Range 11 West of the Fifth Principal Meridian, CHICKASAW County, Iowa.
 Previously recorded in none in County Recorder's Office.
 (book, page, document number, etc.)

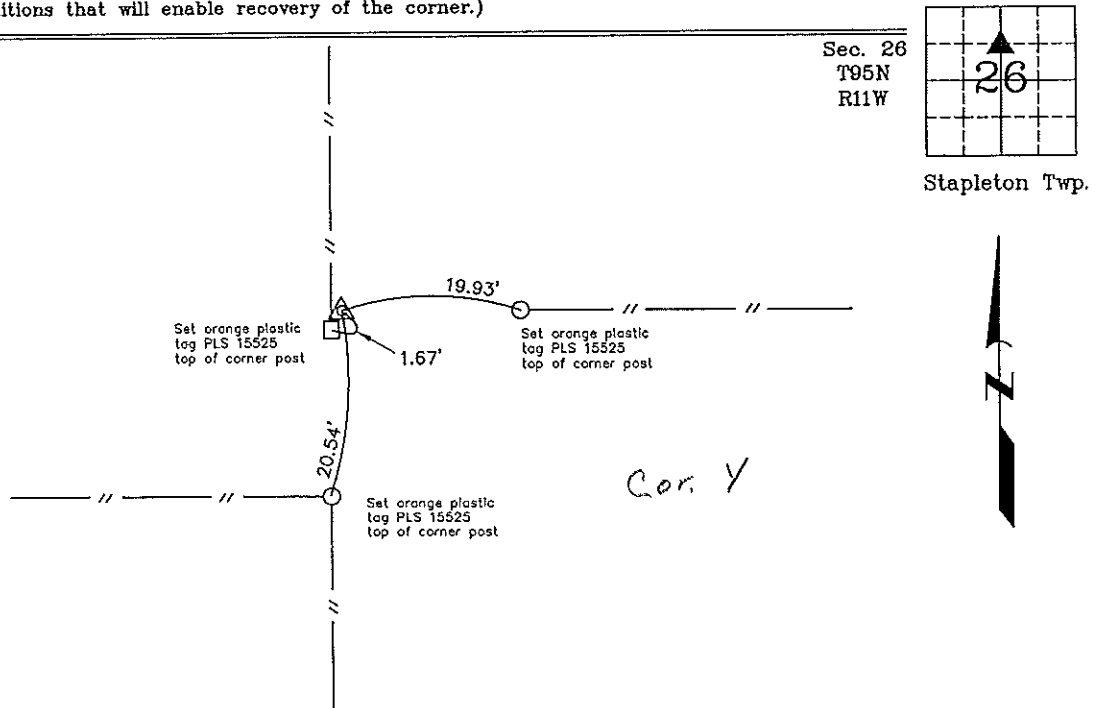
(Show reason for preparing this certificate, the evidence and detailed procedures used in establishing the corner positions and monumentation found or placed.)

Monument Description and Remarks: SW Corner NW 1/4 - NE 1/4 Section 26 T95N R11W:
Found 1/2"Ø rebar w/orange plastic cap 6505 with information obtained from a
Survey and Plat made by Paul Helland recorded in the Chickasaw County Recorder's
Office February 1, 1989 in Book 142, Page 150.

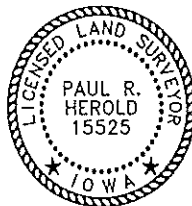
PLAN - VIEW

Project Number 02282.1S
 FB. 46J PG. 53-58

(Show a minimum of three reference ties to durable physical objects, relevant monuments and physical conditions that will enable recovery of the corner.)



SW Corner NW 1/4 - NE 1/4 Section 26 T95N R11W
 Found 1/2"Ø rebar w/orange plastic cap 6505



I hereby certify that this land surveying document was prepared and the related survey work was performed by me or under my direct personal supervision and that I am a duly licensed Land Surveyor under the laws of the State of Iowa.

Paul R. Herold 1-9-03
 Paul R. Herold Date
 License number 15525
 My license renewal date is December 31, 2004.
 Sheets covered by this seal: Individual

List Corners to be Indexed			
Corners	Section	Twp.	Range
SW-NW-NE	26	95N	11W

Filed 1-14-03

X:\Section Corners\Sec. 26\26-95-11h.dwg

County Engineer
 C. J. ...