

UNITED STATES PUBLIC LAND SURVEY CORNER CERTIFICATE

OF

Land Survey Monuments situated in Section 28, Township 95 North, Range 11 West, of the Fifth Principal Meridian, CHICKASAW County, Iowa. Previously recorded in NONE in County Recorder's Office.

(book, page, document number, etc.)

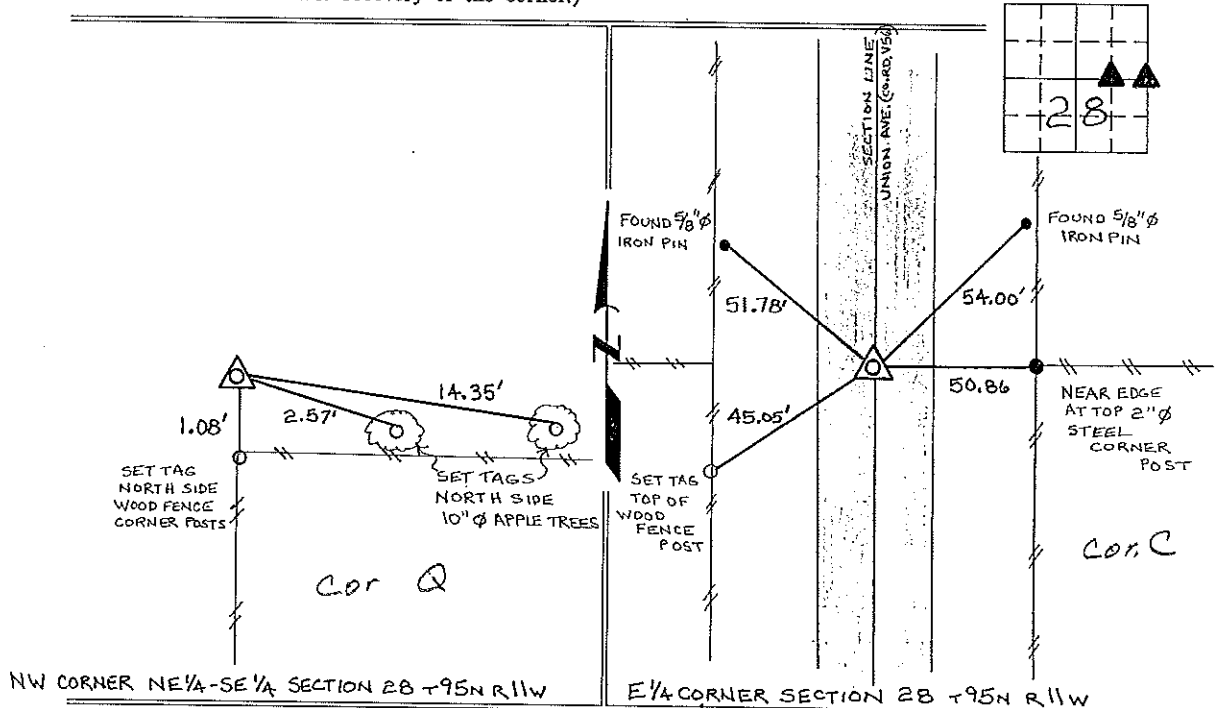
(Show reason for preparing this certificate, the evidence and detailed procedures used in establishing the corner positions and monumentation found or placed.)

Monument Description and Remarks: NW CORNER NE 1/4-SE 1/4 SECTION 28 T95N R11W:
FOUND A 1/2" Ø REBAR w/CAP 7060, SHOWN AS SET ON A SURVEY AND PLAT MADE BY LYLE G. TEKIPPE,
RECORDED APRIL 18, 1988, DEEDS BOOK 140, PAGES 325-326, ON FILE IN THE CHICKASAW COUNTY RECORDERS
OFFICE, NEW HAMPTON, IOWA.

E 1/4 CORNER SECTION 28 T95N R11W: FOUND A CUT "X" IN P.C.C. PAVEMENT, FROM TIES
OBTAINED FROM THE COUNTY ENGINEERS OFFICE, IN FIELD BOOK "STAPLETON TWP. CORNER TIES".

PLAN - VIEW

(Show a minimum of three reference ties to durable physical objects, relevant monuments and physical conditions that will enable recovery of the corner.)



I hereby certify that the survey work was completed and this certificate was prepared by me or under my direct personal supervision and that I am a duly registered land surveyor under the laws of the state of Iowa.

Signature: Lyle G. TeKippe
 Lyle G. TeKippe
 Date: 7-12-96 Reg. No. 7060
 My Registration Renewal Date is December 31, 1998

Seal



| List Corners to be Indexed | | | |
|----------------------------|----------|------|-------|
| Corners | Section | Twp. | Range |
| NW-NE-SE | 28 | 95N | 11W |
| E 1/4 | 28 | 95N | 11W |
| Cor C | 28-95-11 | | |

Place in the Book
 8/5/96