

# UNITED STATES PUBLIC LAND SURVEY CORNER CERTIFICATE

Land Survey Monuments situated in Section 2, Township 95 North, Range 11 West, of the Fifth Principal Meridian, Chickasaw County, Iowa.

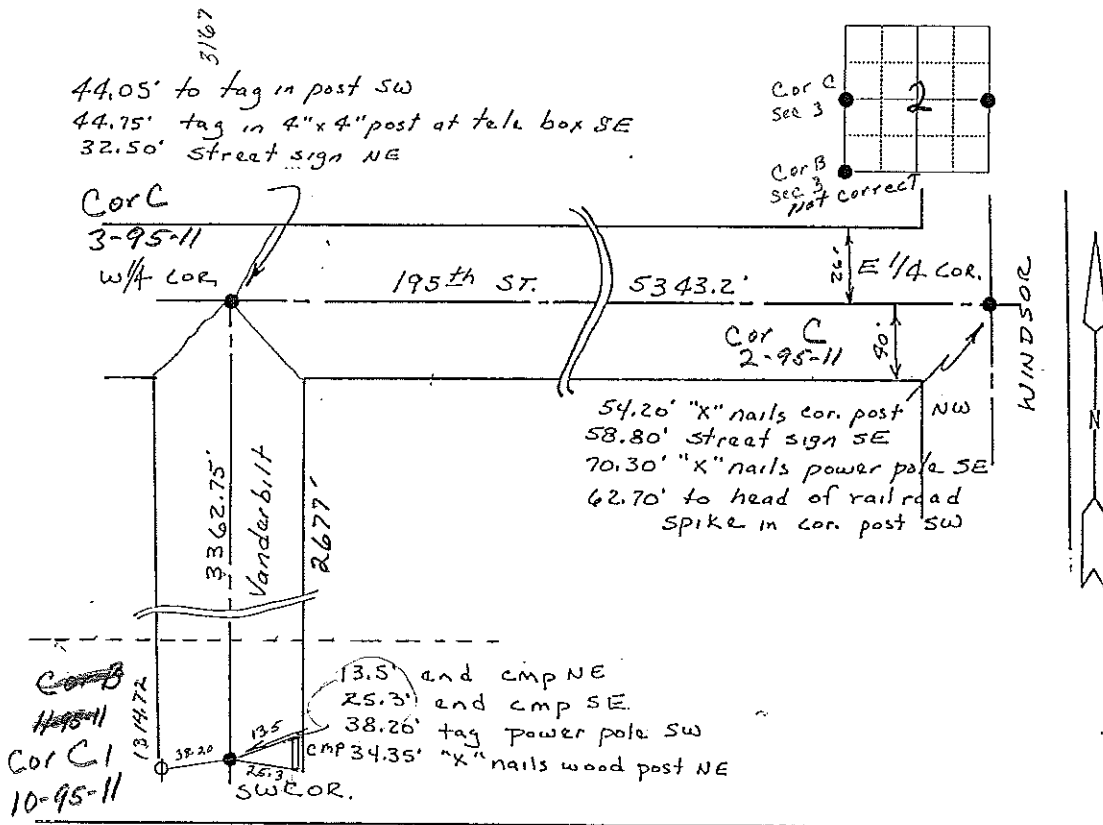
Previously recorded in N/A in County Recorder's Office.  
(book, page, document number, etc.)

(Show reason for preparing this certificate, the evidence and detailed procedures used in establishing the corner positions and monumentation found or placed.)

Monument Description and Remarks: Found 1" twisted rebar @ E 1/4 cor. Corner is 26' south of fence to North side of road and 40' north of fence on south side of road. Found spike in center of dead end road at SW corner section. Spike had red ribbon on it.

## PLAN - VIEW

(Show a minimum of three reference ties to durable physical objects, relevant monuments and physical conditions that will enable recovery of the corner)



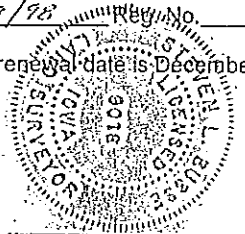
I hereby certify that the survey work was completed and this land surveying document was prepared by me or under my direct personal supervision and that I am a duly licensed land surveyor under the laws of the state of Iowa

Signature: Steve Busse  
Name typed or printed: STEVE BUSSE

Date: 11/9/98 Reg. No. 9018

My license renewal date is December 31, 1998

SEAL



Corners	Section	Twp	Range
w 1/4 cor.	2	95	11
E 1/4 cor.	2	95	11
SW cor	2	95	11

DOCUMENT No. 01057  
RECORDING FEE \$ 6.00  
TRANSFER FEE \$ —  
FILED FOR RECORD THE 12th DAY OF November 1998 AT 10:31  
O'CLOCK A M. BOOK 169 PAGE 349

STATE OF IOWA, CHICKASAW COUNTY.  
By Leitha N. Ross Recorder  
LEITHA N. ROSS  
Deputy