

Prepared by & Return to: Herald - Reicks Surveying, 10 East Main Street, New Hampton, IA 50659, Ph. 641-394-2725

UNITED STATES PUBLIC LAND SURVEY CORNER CERTIFICATE

Land Survey Monuments situated in Section 19, Township 95 North, Range 11 West of the Fifth Principal Meridian, Chickasaw County, Iowa. 1.) Previously recorded in Document #2011-0660 in the County Recorder's office. 2.) Not previously recorded in the County Recorder's office.

This certificate is being prepared in compliance with Iowa Code Chapter 355.11 because:

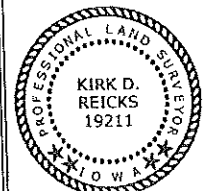
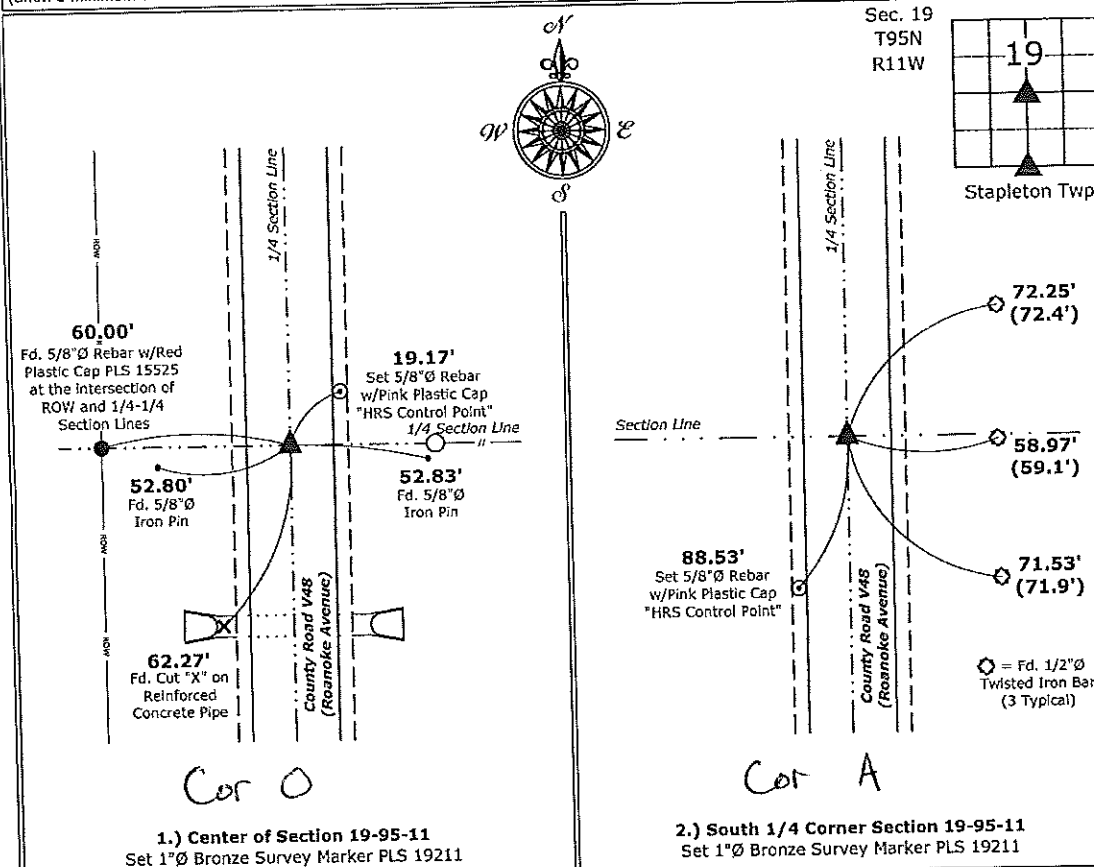
- There is no certificate on file for this corner.
- There are no longer three valid ties of record.
- There are changes to reference ties of record.
- There is change of monumentation of record.
- To clarify description of record monument (ties).

Monument Description and Remarks:

- 1.) **Center:** Set 1"Ø Bronze Survey Marker PLS 19211 at previous location (Found Survey Mark Nail w/Stainless Steel Washer PLS 15525) with coordinates obtained prior to highway reconstruction, Project #STP-S-CO19(94)--5E-19.
- 2.) **South 1/4 Corner:** Set 1"Ø Bronze Survey Marker PLS 19211 at previous location (Found Lead Plug with Information obtained from the County Engineer's office) with coordinates obtained prior to highway reconstruction, Project #STP-S-CO19(94)--5E-19.

PLAN - VIEW

(Show a minimum of three reference ties to durable physical objects, relevant monuments and physical conditions that will enable recovery of the corner.)



I hereby certify that this land surveying document was prepared and the related survey work was performed by me or under my direct personal supervision and that I am a duly licensed Land Surveyor under the laws of the State of Iowa.

Kirk D. Reicks 7-29-15
 Kirk D. Reicks Date:
 License number 19211
 My license renewal date is December 31, 2016.
 Sheets covered by this seal: Individual sheet only

List Corners to be Indexed			
Corners	Section	Twp.	Range
CTR	19	95	11
S 1/4	19	95	11

Project Number: 2015-001
 FB: Chickasaw County 7, Pg. 24

File: S:_CAD Projects\2015-001 (V48)\2015-001.dwg, 7/29/2015 10:23:40 AM

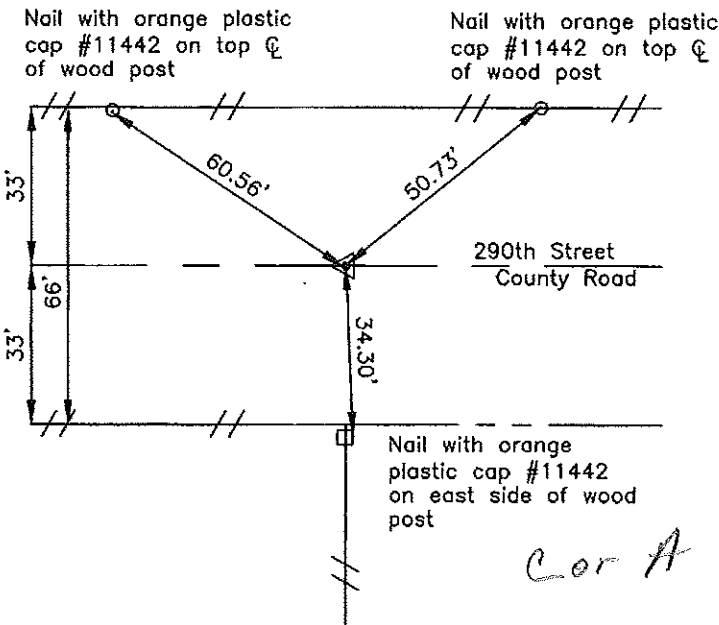
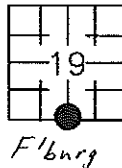
Prepared by: Erdman Engineering, P.C. 708 Commerce Drive, P.O. Box 246 Decorah, Iowa 52101,(563)382-4194

United States Public Land Survey Corner Certificate
 of

Land Survey Monuments situated in Section 19, Township 94, Range 11 West of the 5th Principal Meridian in Chickasaw County, Iowa. Previously recorded in does not apply in the county Recorder's Office.

Monument Description and Remarks: This certificate is prepared in accordance with Section 193C of the Code of Iowa. No previous certificate has been filed for this corner location. Based on Chickasaw County Engineer's Reference ties we searched for the tie markers previously set. We did not find the ties as they appear to have been removed. We searched an area $\pm 25'$ north-south X $\pm 20'$ east-west with a magnetic locator, for the iron pin set previously. We did not find the iron pin as it appears to have been graded out. Based on this we set a $\frac{1}{2}$ " diameter steel bar with 1 $\frac{1}{2}$ " aluminum cap #11442, at the center of the 66' wide county road right-of-way and in line with the fence line running south, as the S $\frac{1}{4}$ Corner of Section 19, Township 94 North, Range 11 West.

Plan-View



I hereby certify that the survey work was completed and this certificate was prepared by me or under my direct supervision and that I am a duly registered land surveyor under the laws of the State of Iowa.

Signature: *Lindsay Erdman*
 Lindsay Erdman, P.E. and L.S.

Date: 2/4/03 Reg. No. 11442

My license renewal date is December 31, 2004

Corner(s) to be indexed

Corner	Section	Township	Range
S 1/4	19	94	11

Filed 2-20-03