

Prepared by & Return to: Herald - Reicks Surveying, 10 East Main Street, New Hampton, IA 50659, Ph. 641-394-2725

**UNITED STATES PUBLIC LAND SURVEY CORNER CERTIFICATE**

Land Survey Monuments situated in Section <sup>30</sup>~~31~~, Township **95 North**, Range **11 West** of the Fifth Principal Meridian, **Chickasaw County, Iowa**. 1.) Not previously recorded in the County Recorder's office.  
 2.) Previously recorded in Document #2014-0977 in the County Recorder's office.

This certificate is being prepared in compliance with Iowa Code Chapter 355.11 because:

- 1 There is no certificate on file for this corner.
- 2 There are no longer three valid ties of record.
- 3 There are changes to reference ties of record.
- 4 There is change of monumentation of record.
- 5 To clarify description of record monument (ties).

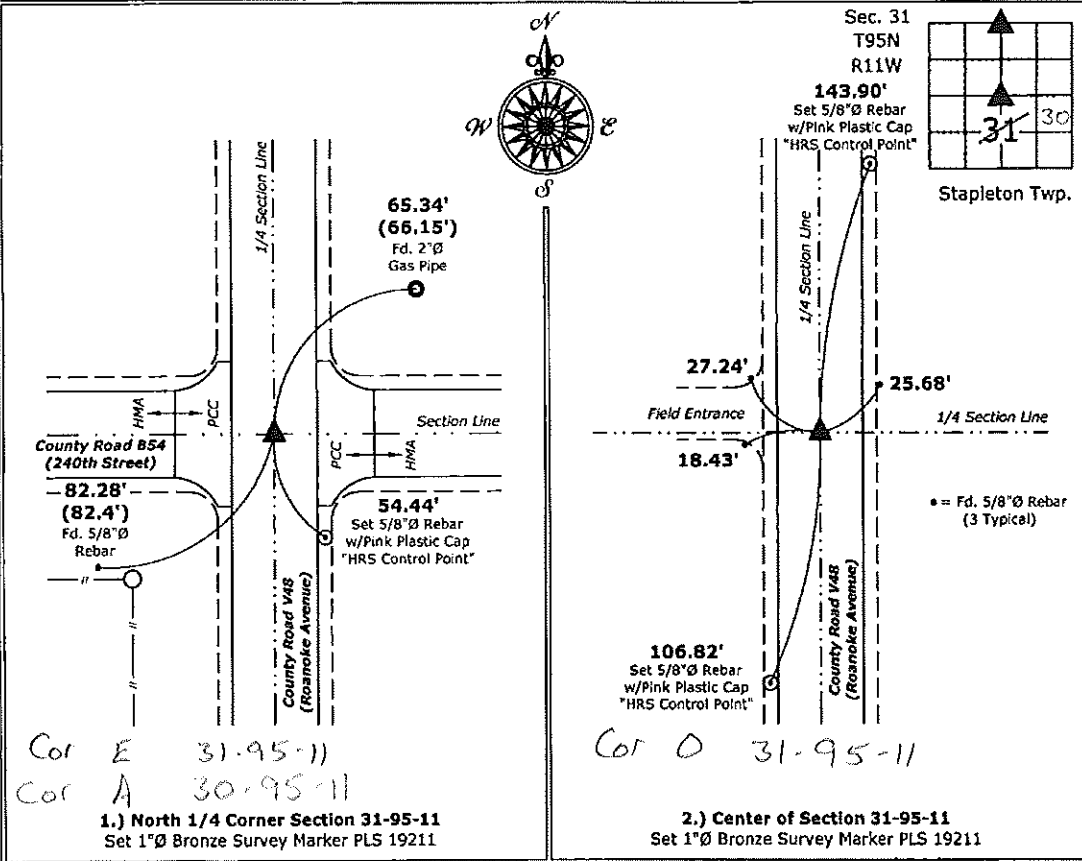
Monument Description and Remarks:

**1.) North 1/4 Corner:** Set 1"Ø Bronze Survey Marker PLS 19211 at previous location (Found PK Nail with information obtained from the County Engineer's office) with coordinates obtained prior to highway reconstruction, Project #STP-S-CO19(94)--5E-19.

**2.) Center:** Set 1"Ø Bronze Survey Marker PLS 19211 at previous location (Found PK Nail) with coordinates obtained prior to highway reconstruction, Project #STP-S-CO19(94)--5E-19.

**PLAN - VIEW**

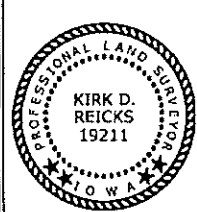
(Show a minimum of three reference ties to durable physical objects, relevant monuments and physical conditions that will enable recovery of the corner.)



Cor E 31-95-11  
 Cor A 30-95-11

**1.) North 1/4 Corner Section 31-95-11**  
 Set 1"Ø Bronze Survey Marker PLS 19211

**2.) Center of Section 31-95-11**  
 Set 1"Ø Bronze Survey Marker PLS 19211



I hereby certify that this land surveying document was prepared and the related survey work was performed by me or under my direct personal supervision and that I am a duly licensed Land Surveyor under the laws of the State of Iowa.  
*Kirk D. Reicks* 7-29-15  
 Kirk D. Reicks Date:  
 License number 19211  
 My license renewal date is December 31, 2016.  
 Sheets covered by this seal: Individual sheet only

List Corners to be Indexed			
Corners	Section	Twp.	Range
N 1/4	31	95	11
CTR	31	95	11

Project Number: 2015-001  
 FB: Chickasaw County 7, Pg. 24

File: S:\\_CSD Projects\2015-001 (V48)\2015-001.dwg, 7/29/2015 10:23:50 AM

Chickasaw Co. Recorder  
 Cindy Messersmith  
**Fee Book 2014-0977**  
 07/28/2014 @10:29AM  
 SCC SEC COR CERT  
 Book: Page: # Pages: 1  
 Total Fees: \$7.00

Prepared by & Return to: Herold - Reicks Surveying, 10 East Main Street, New Hampton, IA 50659, Ph. 641-394-2725

**UNITED STATES PUBLIC LAND SURVEY CORNER CERTIFICATE**

Land Survey Monuments situated in Section 31, Township 95 North, Range 11 West of the Fifth Principal Meridian, Chickasaw County, Iowa. Not previously recorded in the County Recorder's office.

This certificate is being prepared in compliance with Iowa Code Chapter 355.11 because:

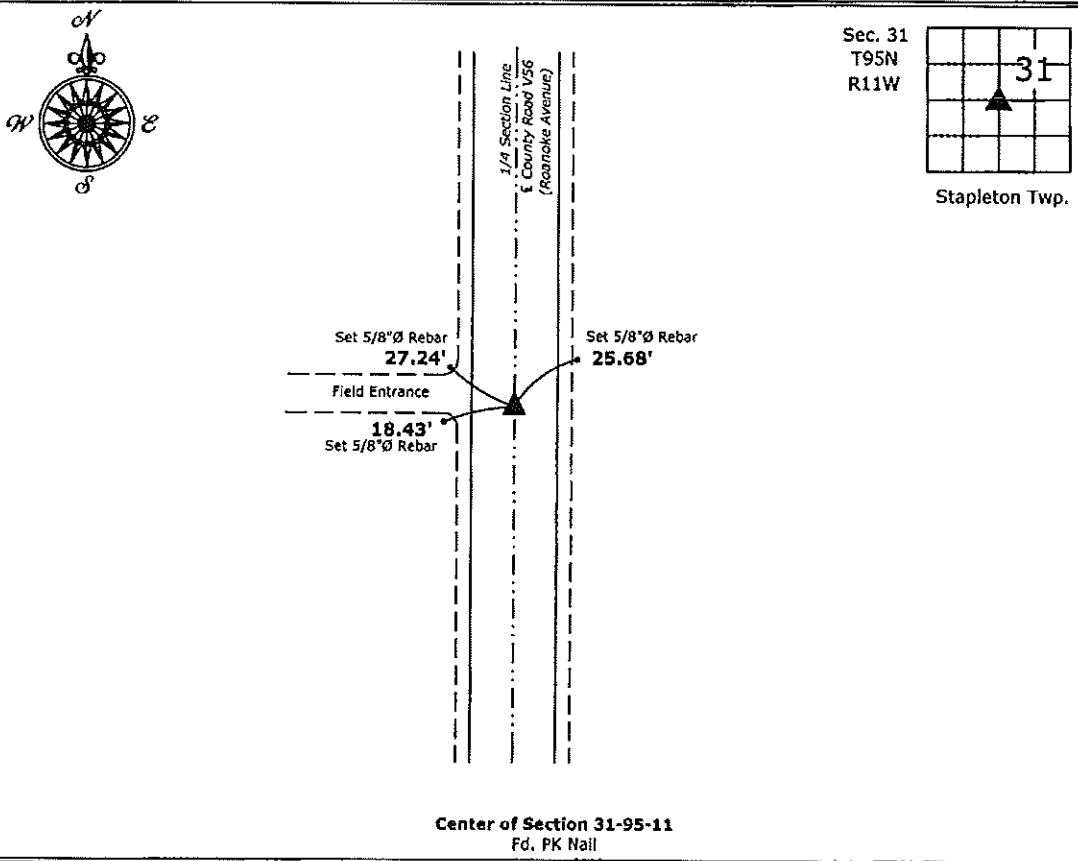
- There is no certificate on file for this corner.
- There are no longer three valid ties of record.
- There are changes to reference ties of record.
- There is change of monumentation of record.
- To clarify description of record monument (ties).

Monument Description and Remarks:

**Center of Section:** Fd. PK Nail from information obtained from the Chickasaw County Engineer's office, in Field Book Stapleton Twp. Corner Ties, Section 31, Corner "O"

**PLAN - VIEW**

(Show a minimum of three reference ties to durable physical objects, relevant monuments and physical conditions that will enable recovery of the corner.)



**Center of Section 31-95-11**  
 Fd. PK Nail



I hereby certify that this land surveying document was prepared and the related survey work was performed by me or under my direct personal supervision and that I am a duly licensed Land Surveyor under the laws of the State of Iowa.

*Paul R. Herold* 7-20-14  
 Paul R. Herold Date:  
 License number 15525  
 My license renewal date is December 31, 2014.  
 Sheets covered by this seal: Individual sheet only

List Corners to be Indexed			
Corners	Section	Twp.	Range
CTR	31	95	11

Project Number: 2014-013  
 FB: Chickasaw County 6, Pg. 22

File: S:\\_CAD Projects\County Control Systems\CHICKASAW\CHICK-36\CHICK-36.dwg, 7/21/2014 8:43:01 AM