

Prepared by & Return to: Herold - Reicks Surveying, 10 East Main Street, New Hampton, IA 50659, Ph. 641-394-2725

UNITED STATES PUBLIC LAND SURVEY CORNER CERTIFICATE

Land Survey Monuments situated in Section ³⁰31, Township 95 North, Range 11 West of the Fifth Principal Meridian, Chickasaw County, Iowa. 1.) & 2.) Not previously recorded in the County Recorder's office.

This certificate is being prepared in compliance with Iowa Code Chapter 355.11 because:

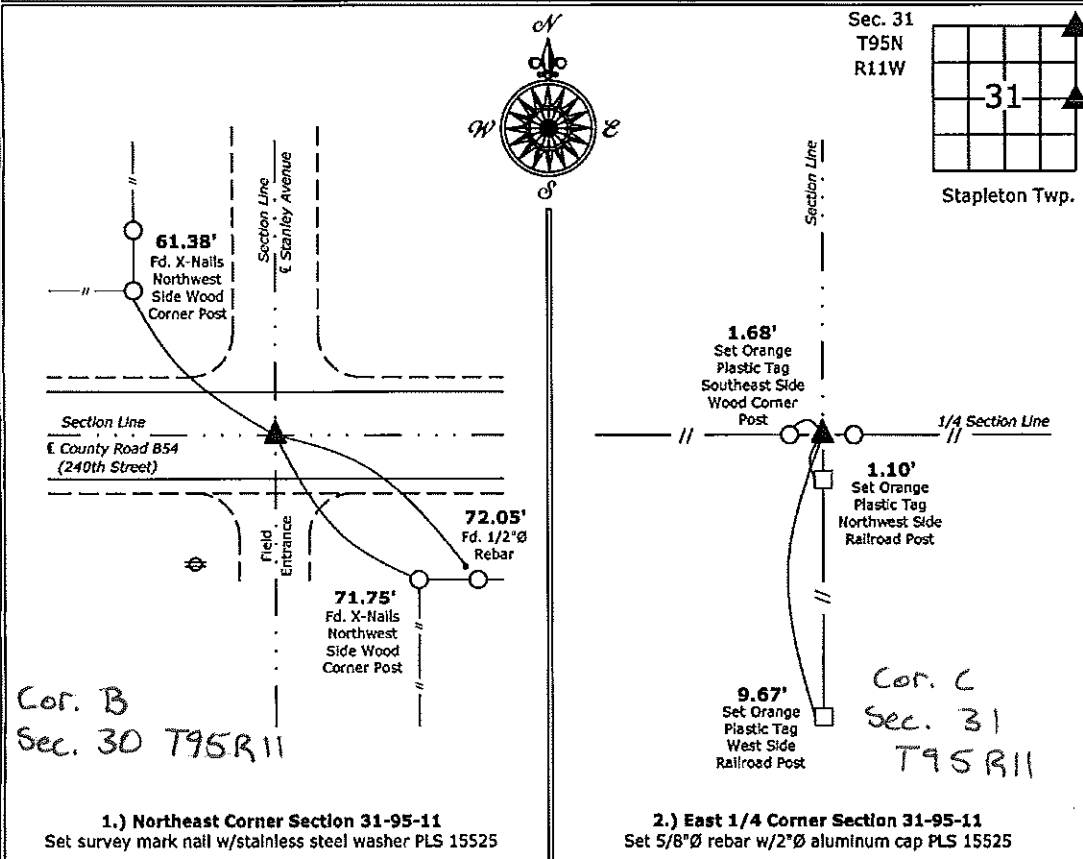
- 1 & 2 There is no certificate on file for this corner.
 There are no longer three valid ties of record.
 There are changes to reference ties of record.
 There is change of monumentation of record.
 To clarify description of record monument (ties).

Monument Description and Remarks:

- 1.) **Northeast Corner:** Set survey mark nail w/stainless steel washer PLS 15525 in HMA using existing ties with information obtained from the County Engineer's Office in Field Book, Stapleton Township, Section 30, Corner B.
 2.) **East 1/4 Corner:** Set 5/8"Ø rebar with 2"Ø aluminum cap PLS 15525 at the intersection of possession line fences after comparing distances to adjacent corners in the Section. There is no records of the perpetuation of a monument at this Corner.

PLAN - VIEW

(Show a minimum of three reference ties to durable physical objects, relevant monuments and physical conditions that will enable recovery of the corner.)



I hereby certify that this land surveying document was prepared and the related surveying work was performed by me or under my direct personal supervision and that I am a duly licensed Land Surveyor under the laws of the State of Iowa.

Paul R. Herold 5-2-14
 Paul R. Herold Date:
 License number 15525
 My license renewal date is December 31, 2014.
 Sheets covered by this seal: Individual sheet only

List Corners to be Indexed			
Corners	Section	Twp.	Range
NE	31	95	11
E 1/4	31	95	11

Project Number: 2014-013
 FB: Chickasaw 6, Pg. 22

File: S:_CSD Projects\County Control Systems\CHICKASAW\CHICK-36.dwg, 5/2/2014 3:17:58 PM