

Prepared by & Return to: Herald - Reicks Surveying, 10 East Main Street, New Hampton, IA 50659, Ph. 641-394-2725

UNITED STATES PUBLIC LAND SURVEY CORNER CERTIFICATE

Land Survey Monuments situated in Section ³⁰~~31~~, Township **95 North**, Range **11 West** of the Fifth Principal Meridian, **Chickasaw County, Iowa**. 1.) Not previously recorded in the County Recorder's office.
 2.) Previously recorded in Document #2014-0977 in the County Recorder's office.

This certificate is being prepared in compliance with Iowa Code Chapter 355.11 because:

- 1 There is no certificate on file for this corner.
- 2 There are no longer three valid ties of record.
- 3 There are changes to reference ties of record.
- 4 There is change of monumentation of record.
- 5 To clarify description of record monument (ties).

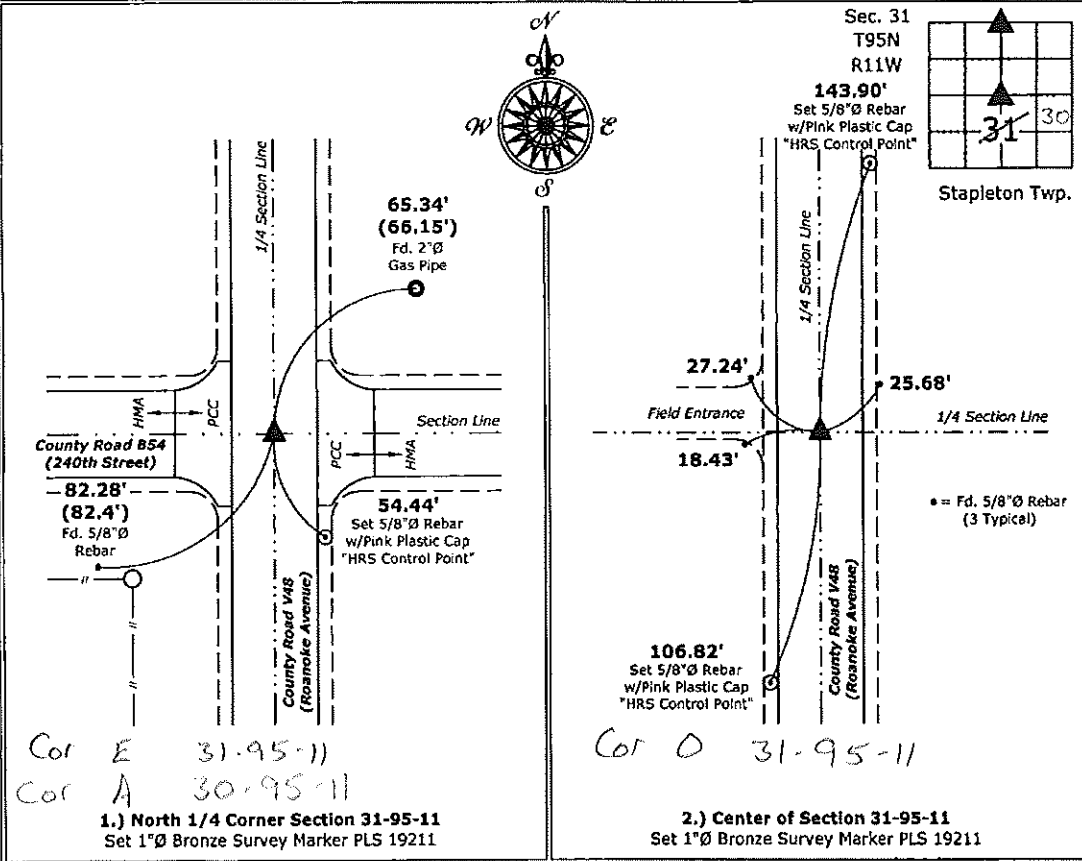
Monument Description and Remarks:

1.) North 1/4 Corner: Set 1"Ø Bronze Survey Marker PLS 19211 at previous location (Found PK Nail with information obtained from the County Engineer's office) with coordinates obtained prior to highway reconstruction, Project #STP-S-CO19(94)--SE-19.

2.) Center: Set 1"Ø Bronze Survey Marker PLS 19211 at previous location (Found PK Nail) with coordinates obtained prior to highway reconstruction, Project #STP-S-CO19(94)--SE-19.

PLAN - VIEW

(Show a minimum of three reference ties to durable physical objects, relevant monuments and physical conditions that will enable recovery of the corner.)



I hereby certify that this land surveying document was prepared and the related survey work was performed by me or under my direct personal supervision and that I am a duly licensed Land Surveyor under the laws of the State of Iowa.

Kirk D. Reicks 7-29-15
 Kirk D. Reicks Date:

License number 19211
 My license renewal date is December 31, 2016.
 Sheets covered by this seal: Individual sheet only

List Corners to be Indexed			
Corners	Section	Twp.	Range
N 1/4	31	95	11
CTR	31	95	11

Project Number: 2015-001
 FB: Chickasaw County 7, Pg. 24