

UNITED STATES PUBLIC LAND SURVEY CORNER CERTIFICATE

OF

Land Survey Monuments situated in Section 4, Township 94 North, Range 11 West, of the Fifth Principal Meridian, CHICKASAW County, Iowa. Previously recorded in NONE in County Recorder's Office.

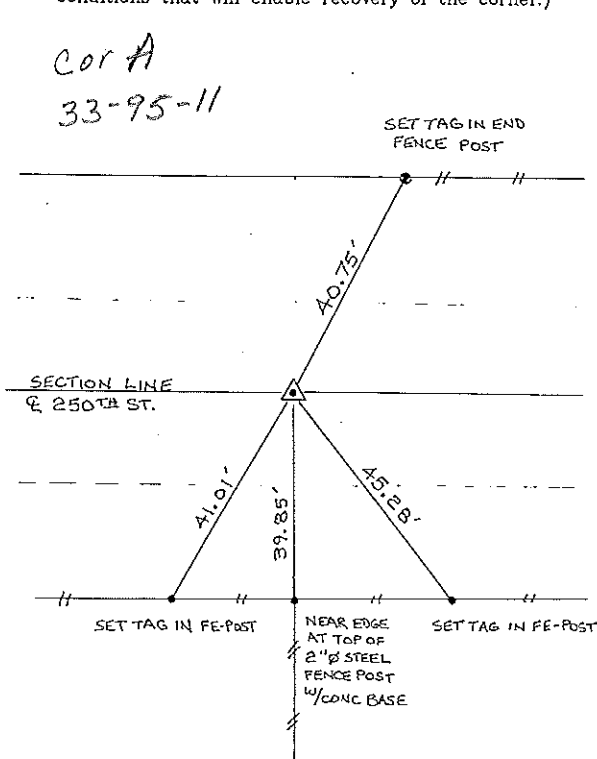
Section 33-95-11
As referred to in
Engr. Tie Book

(Show reason for preparing this certificate, the evidence and detailed procedures used in establishing the corner positions and monumentation found or placed.)

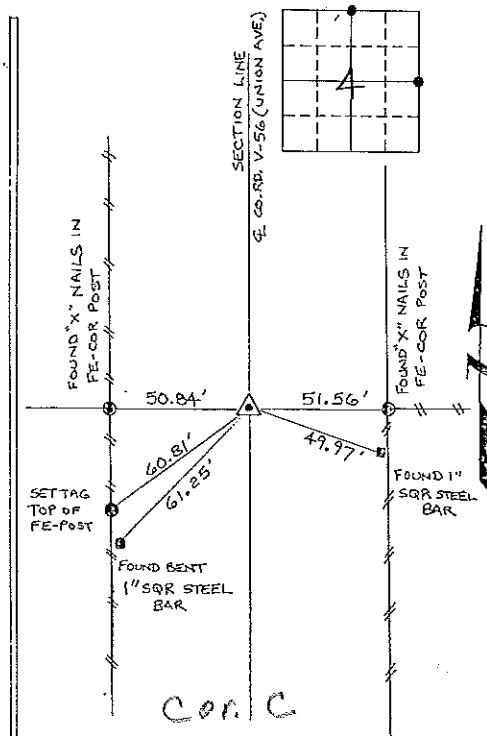
Monument Description and Remarks: N 1/4 CORNER SECTION 4 T94N R11W: FOUND 1 1/2" Ø GAS PIPE @ C. OF 250' ST IN LINE WITH N & S FENCES, PREVIOUSLY UNRECORDED, PIPE WAS FOUND 0.2 DEEP.
E 1/4 CORNER SECTION 4 T94N R11W: FOUND PK NAIL @ C. OF COUNTY ROAD V-56 MATCHING COUNTY ENGINEER TIES.

PLAN - VIEW

(Show a minimum of three reference ties to durable physical objects, relevant monuments and physical conditions that will enable recovery of the corner.)



N 1/4 CORNER SECTION 4 T94N R11W



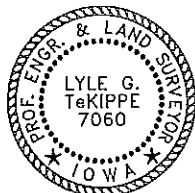
E 1/4 CORNER SECTION 4 T94N R11W

I hereby certify that the survey work was completed and this certificate was prepared by me or under my direct personal supervision and that I am a duly registered land surveyor under the laws of the state of Iowa.

Signature: Lyle G. TeKippe
Lyle G. TeKippe

Date: 8-22-95 Reg. No. 7060
My Registration Renewal Date is December 31, 1996

Seal



List Corners to be Indexed

Corners	Section	Twp.	Range
N 1/4	A	94N	11W
Cor A	A 33-95-11		
E 1/4	A	94N	11W
Cor C	4-94-11		

Placed in
tee Book
9/1/95

"County Engineer's Copy"