



Prepared by & Return to: Kirk D. Reicks, HRS, L.L.C., 10 East Main Street, New Hampton, IA 50659, Phone 641-394-2725

### United States Public Land Survey Corner Certificate

Land Survey Monument situated in  
 Section **33**, Township **95** North, Range **11** West of the Fifth Principal Meridian, **Chickasaw** County, Iowa.  
 On file in **Document #2004-1352** in the County Recorder's Office.

This certificate is being prepared in compliance with Iowa Code Chapter 355.11 because:
 

- There is no certificate on file for this corner.
- There are no longer three valid ties of record.
- There are changes to reference ties of record.
- There is change of monumentation of record.
- To clarify description of record monument (ties).

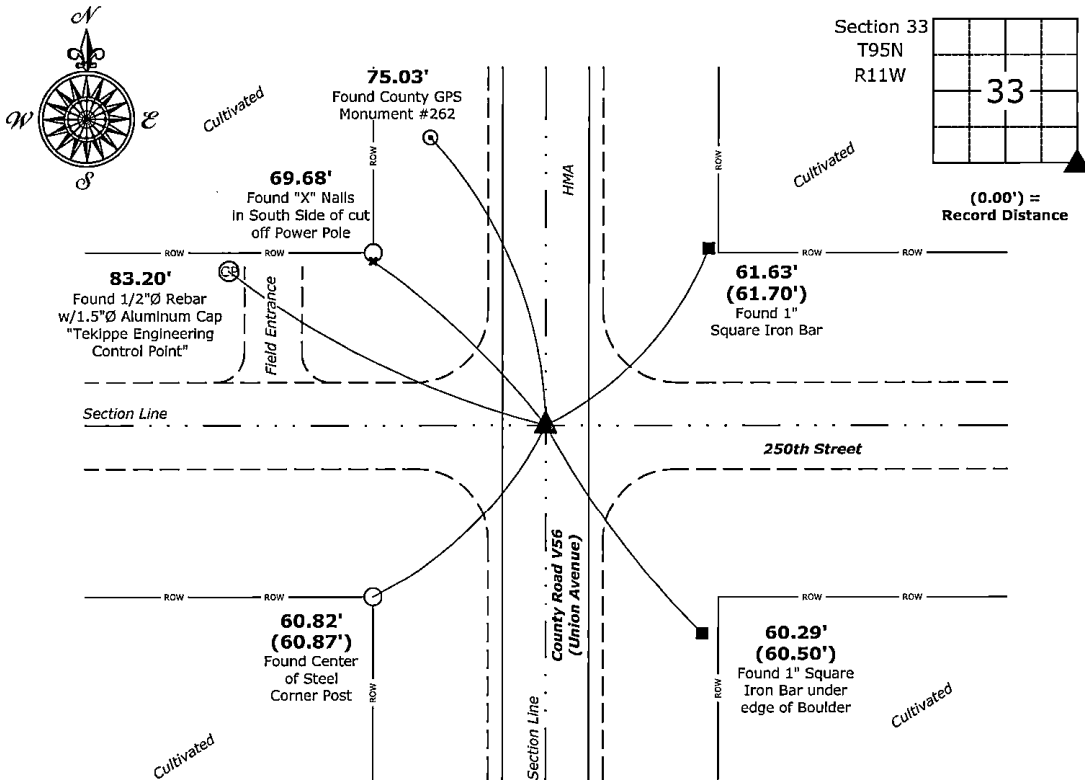
**Monument Description and Remarks:**

**Southeast Corner:**

Found PK Nail 2" deep in asphalt surface with information obtained from the previously recorded Section Corner Certificate. Monument was unstable, therefore removed PK Nail and set 5/8"Ø Rebar w/2"Ø Aluminum Cap PLS 19211 2" deep in asphalt surface. Corner was perpetuated at the request of the Chickasaw County Engineer's Office.

### Plan View - Not to Scale

(Show a minimum of three reference ties to durable physical objects, relevant monuments and physical conditions that will enable recovery of the corner.)



**Southeast Corner of Section 33-95-11**  
 Set 5/8"Ø Rebar w/2"Ø Aluminum Cap PLS 19211



I hereby certify that this land surveying document was prepared and the related survey work was performed by me or under my direct personal supervision and that I am a duly licensed Land Surveyor under the laws of the State of Iowa.

*Kirk D. Reicks* 2-25-2026  
 Kirk D. Reicks Date:

License Number 19211  
 My License Renewal Date is December 31, 2026.  
 Sheets covered by this seal: Individual sheet only

List Corner to be Indexed			
Corner	Section	Township	Range
SE	33	95	11

Project Number: 2026-021

FB: Chickasaw 14, Page(s) 41