

UNITED STATES PUBLIC LAND SURVEY CORNER CERTIFICATE

OF

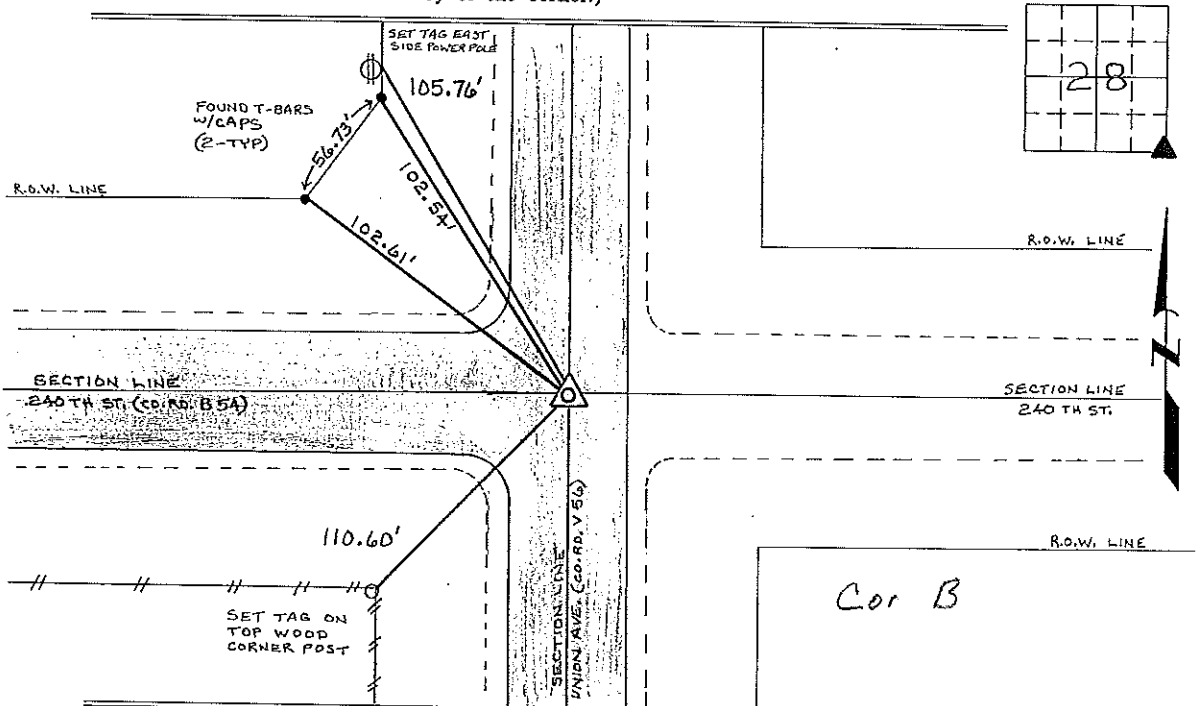
Land Survey Monuments situated in Section 28, Township 95 North, Range 11 West, of the Fifth Principal Meridian, CHICKASAW County, Iowa. Previously recorded in NONE in County Recorder's Office.
(book, page, document number, etc.)

(Show reason for preparing this certificate, the evidence and detailed procedures used in establishing the corner positions and monumentation found or placed.)

Monument Description and Remarks: SE CORNER SECTION 28 T95N R11W: FOUND PK NAIL AS SHOWN ON A SURVEY AND PLAT MADE BY ROGER D. HANSON, RECORDED MARCH 17, 1980, DEEDS BOOK 121, PAGES 387-388, AND A SURVEY AND PLAT MADE BY LYLE G. TEKIPPE, RECORDED APRIL 18, 1988, DEEDS BOOK 140, PAGES 325-326, BOTH ON FILE IN THE CHICKASAW COUNTY RECORDERS OFFICE, NEWHAMPTON, IOWA.

PLAN - VIEW

(Show a minimum of three reference ties to durable physical objects, relevant monuments and physical conditions that will enable recovery of the corner.)



I hereby certify that the survey work was completed and this certificate was prepared by me or under my direct personal supervision and that I am a duly registered land surveyor under the laws of the state of Iowa.

Signature: Lyle G. TeKippe
Lyle G. TeKippe
Date: 7-12-96 Reg. No. 7080
My Registration Renewal Date is December 31, 1998

Seal



List Corners to be Indexed			
Corners	Section	Twp.	Range
SE	28	95N	11W

Placed in file book 8/5/96