



Prepared by & Return to: Kirk D. Reicks, HRS, L.L.C., 10 East Main Street, New Hampton, IA 50659, Phone 641-394-2725

United States Public Land Survey Corner Certificate

Land Survey Monument situated in
 Section 33, Township 95 North, Range 11 West of the Fifth Principal Meridian, Chickasaw County, Iowa.
 On file in **Book 161, Page 405** in the County Recorder's Office.

This certificate is being prepared in compliance with Iowa Code Chapter 355.11 because:

- There is no certificate on file for this corner.
- There are no longer three valid ties of record.
- There are changes to reference ties of record.
- There is change of monumentation of record.
- To clarify description of record monument (ties).

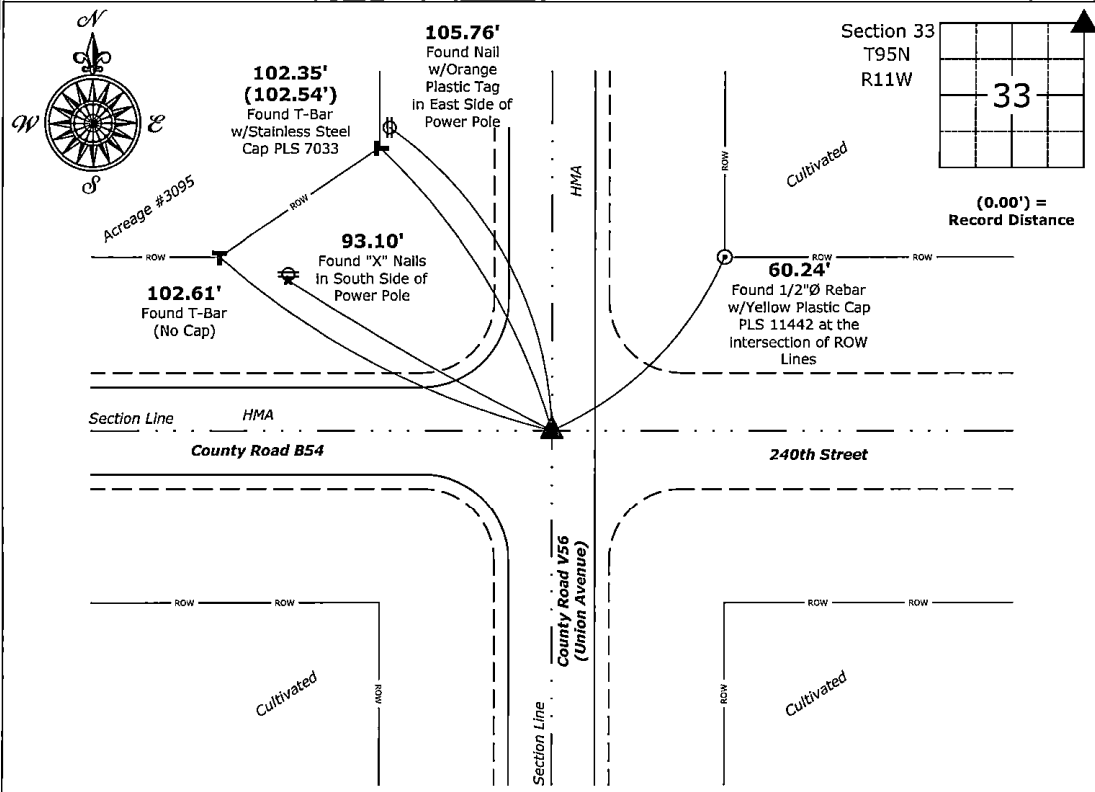
Monument Description and Remarks:

Northeast Corner:

Found PK Nail 3" deep in asphalt surface with information obtained from the previously recorded Section Corner Certificate. Monument was unstable, therefore removed PK Nail and Set 5/8"Ø Rebar w/2"Ø Aluminum Cap PLS 19211, 3" deep in asphalt surface. Corner was perpetuated at the request of the Chickasaw County Engineer's Office.

Plan View - Not to Scale

(Show a minimum of three reference ties to durable physical objects, relevant monuments and physical conditions that will enable recovery of the corner.)



Northeast Corner of Section 33-95-11
 Set 5/8"Ø Rebar w/2"Ø Aluminum Cap PLS 19211



I hereby certify that this land surveying document was prepared and the related survey work was performed by me or under my direct personal supervision and that I am a duly licensed Land Surveyor under the laws of the State of Iowa.

Kirk D. Reicks 2-25-2026
 Kirk D. Reicks Date:
 License Number 19211
 My License Renewal Date is December 31, 2026.
 Sheets covered by this seal: Individual sheet only

List Corner to be Indexed			
Corner	Section	Township	Range
NE	33	95	11
Project Number: 2026-021			
FB: Chickasaw 14, Page(s) 41			

File: S:_Projects - NHO\County Control Systems\CHICKASAW\CHICK-37\CHICK-37-2026.dwg, 2/25/2026 1:35:05 PM