

Section 34-96-11
 As referred to in
 Engr. Tie Book

TEKIPPE ENGINEERING, P.C., 128 South Vine Street, West Union, Iowa 52175 Phone (319) 422-5131

UNITED STATES PUBLIC LAND SURVEY CORNER CERTIFICATE

OF

Land Survey Monuments situated in Section 34, Township 95¹⁶ North, Range 11 West, of the Fifth Principal Meridian, CHICKASAW County, Iowa. Previously recorded in NONE in County Recorder's Office.

(book, page, document number, etc.)

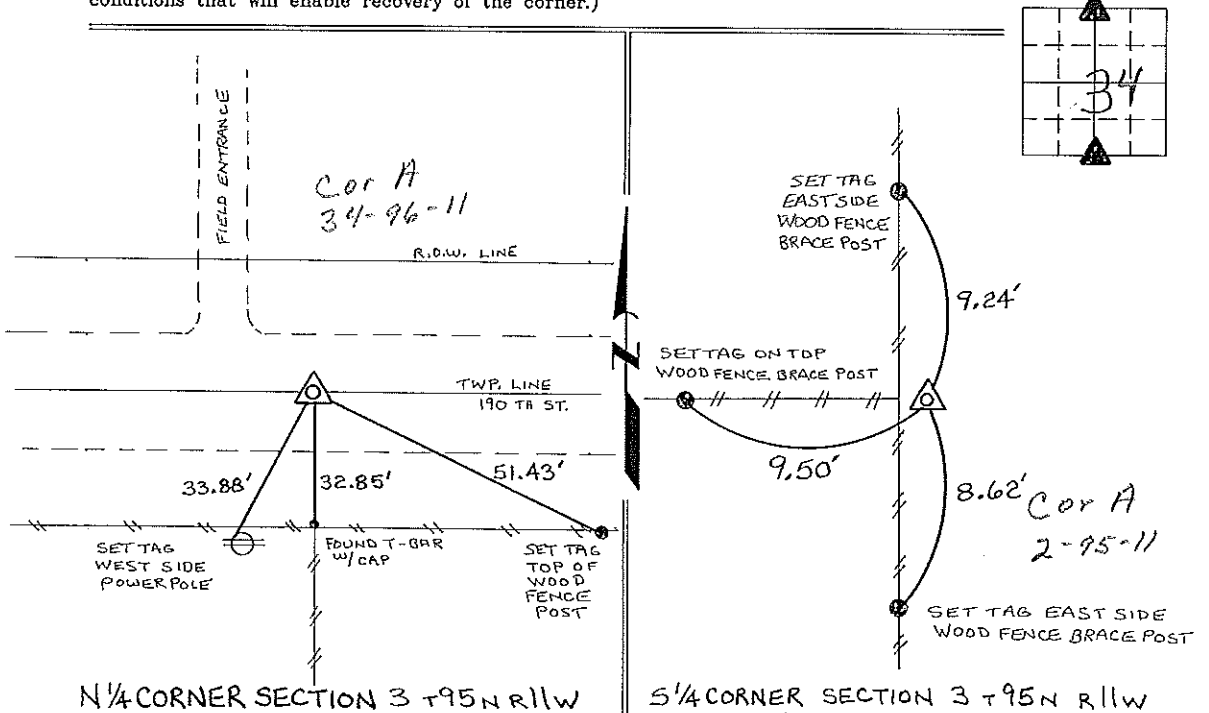
(Show reason for preparing this certificate, the evidence and detailed procedures used in establishing the corner positions and monumentation found or placed.)

Monument Description and Remarks: N 1/4 CORNER SECTION 3, T95N R11W:
FOUND T-BAR AS DESCRIBED AS SET ON A SURVEY AND PLAT MADE BY
HAROLD D. BLESSING, RECORDED MAY 23, 1977, BOOK 114, PAGES 176-177, ON FILE IN THE
CHICKASAW COUNTY RECORDERS OFFICE.

S 1/4 CORNER SECTION 3, T95N R11W: FOUND 1/2" ϕ REBAR w/CAP 7060 AS DESCRIBED AS
SET ON A SURVEY AND PLAT MADE BY LYLE G. TEKIPPE, RECORDED JUNE 7, 1990, BOOK 145,
PAGES 95-98, ON FILE IN THE CHICKASAW COUNTY RECORDERS OFFICE.

PLAN - VIEW

(Show a minimum of three reference ties to durable physical objects, relevant monuments and physical conditions that will enable recovery of the corner.)



N 1/4 CORNER SECTION 3 T95N R11W

S 1/4 CORNER SECTION 3 T95N R11W

I hereby certify that the survey work was completed and this certificate was prepared by me or under my direct personal supervision and that I am a duly registered land surveyor under the laws of the state of Iowa.

Signature: Lyle G. TeKippe
 Lyle G. TeKippe

Date: 5-17-96 Reg. No. 7060
 My Registration Renewal Date is December 31, 1998

Seal



List Corners to be Indexed

Corners	Section	Twp.	Range
N 1/4	3	95N	11W
S 1/4	3	95N	11W

Corner A 3-95-11

*Placed in tie book
 6/17/96*