

Fee \$1100
2003 DEC 31 AM 9 19

CINDY MESSERSMITH
COUNTY RECORDER

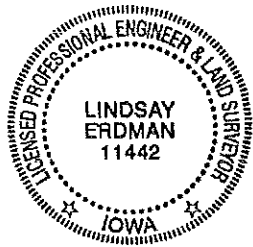
Prepared by: Erdman Engineering, P.C., 708 Commerce Drive, P.O. Box 246, Decorah, Iowa 52101 (563) 382-4194

United States Public Land Survey Corner Certificate
of

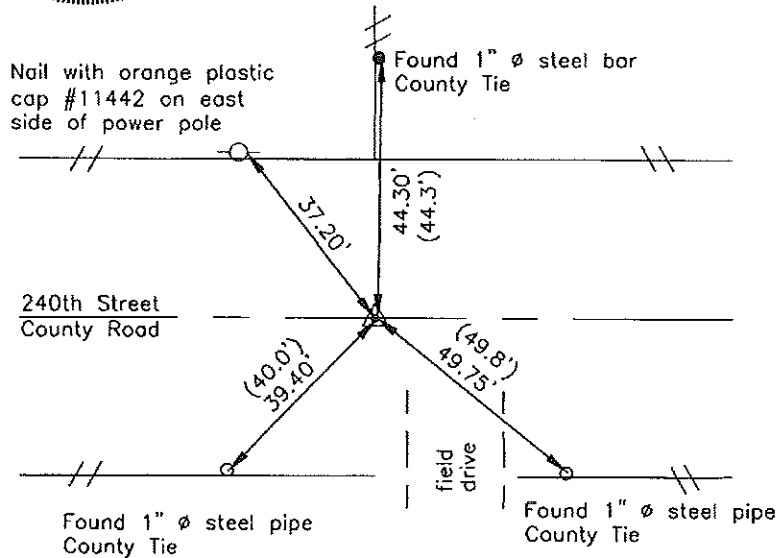
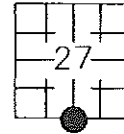
Land Survey Monuments situated in Section 27, Township 95, Range 11 West of the 5th Principal Meridian in Chickasaw County, Iowa. Previously recorded in does not apply in the county Recorder's Office.

Monument Description and Remarks: This certificate is prepared in accordance with Section 193C of the Code of Iowa. No previous certificate has been filed for this corner location. Based on Chickasaw County Engineer's Reference Ties we found two 1" diameter steel pipes and a 3/4" diameter steel bar that have been used previously as tie markers. From these ties we found a 1" diameter steel pipe at the approximate centerline of the county road and in line with the fence line running north. County Engineer's Reference Ties show only that an "IP" had been found in 1983. No I.P. was found now. We used the 1" diameter steel pipe as the best evidence of the location of the S 1/4 Corner of Section 27, Township 95 North, Range 11 West.

Plan-View



Cor. A



I hereby certify that the survey work was completed and this certificate was prepared by me or under my direct supervision and that I am a duly registered land surveyor under the laws of the State of Iowa.

Signature *Lindsay Erdman*
Lindsay Erdman, P.E. and P.L.S. Iowa License Number 11442

Date: 12/23/03

My license renewal date is December 31, 2004

Corner(s) to be Indexed

Corner	Section	Township	Range
S 1/4	27	95	11

